
Thailand News

September 2015

CONTENTS

- Project 1: Keemala (Resort, Phuket)
-

1. KEEMALA

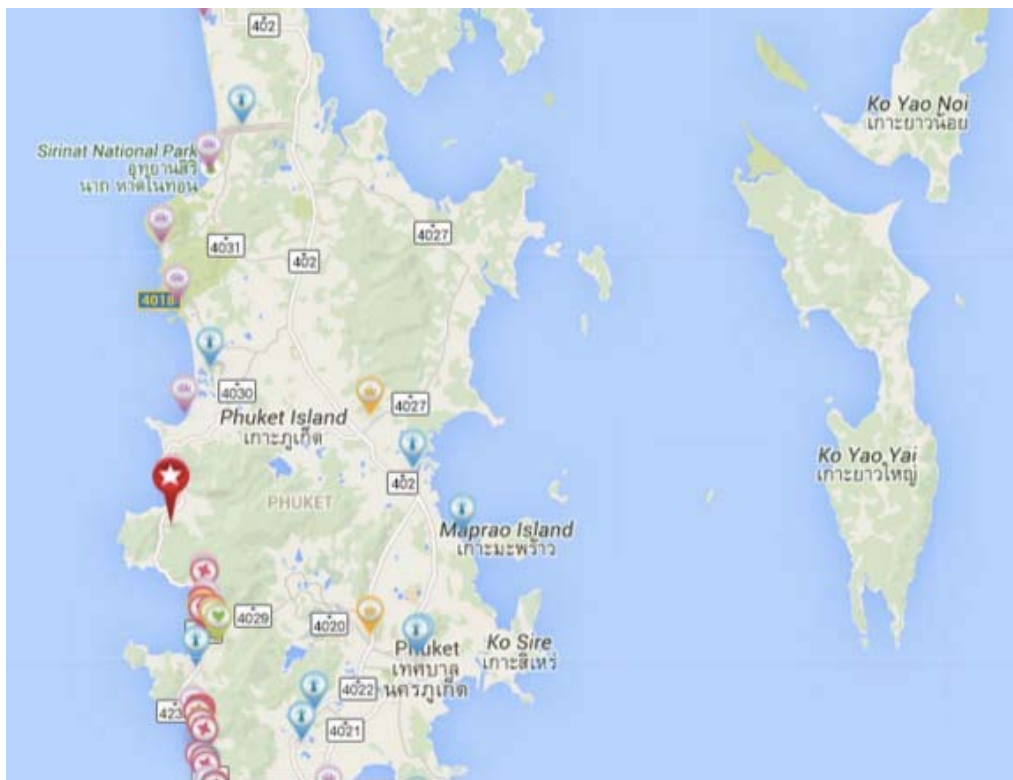
Project Overview

Keemala Phuket is a newly opened all-pool villa resort overlooking the Andaman Sea. Taking its inspiration from the early Phuket settlers, the resort's 38 cottages and villas are joined together by a network of jungle walkways. The romantic picture is completed by a lush canopy of trees and a continuous stream-like body of running water that snakes its way through the hilly resort.

Project Details

1. **Type of Business:** Luxury resort
2. **Open Date:** 09/2015
3. **Concept:** Design inspired by the indigenous culture of early Phuket settlers
4. **Location:** West coast of Phuket island, Thailand
5. **Number of Rooms:** 38 rooms, divided into Clay Pool Cottages, Tent Pool Villas, Tree Pool Houses and Bird's Nest Pool Villas.
6. **Room Rate:** Rates start at THB 14,341 (USD 400) per night.
7. **Target Customer:** Luxury leisure travelers
8. **Website:** www.keemala.com

Location map



The resort is located on the west coast of Phuket, close to tourist hotspots Patong Beach and Surin Beach. The airport is approximately a 40-minute drive away.



The resort is surrounded by thick jungle, waterfalls and streams.



Resort pool.



Meditation bridge.



The design of the villas have been inspired by the stories, cultures, traditions and lifestyles of early Phuket settlers.



Each of the dwellings comes with its own private pool.



Bird's Nest Pool Villa





Tree Pool House



Library



VIP room



Lobby area

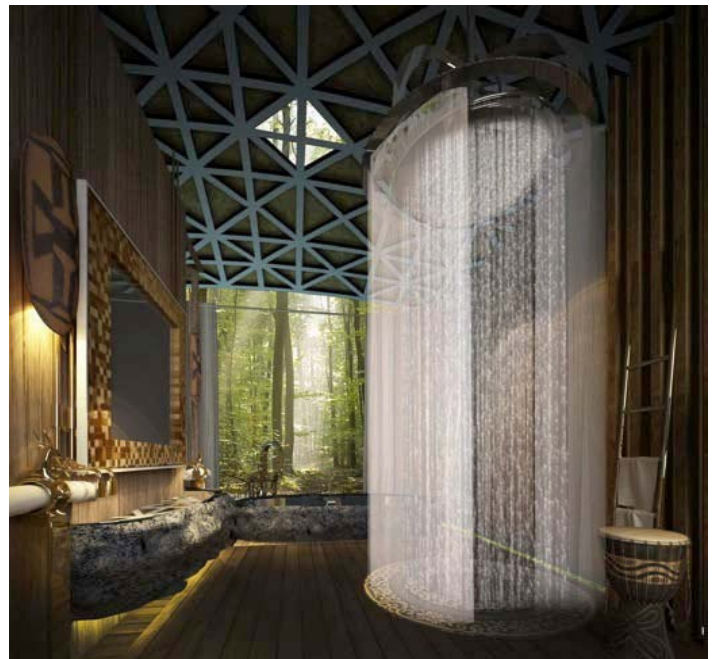
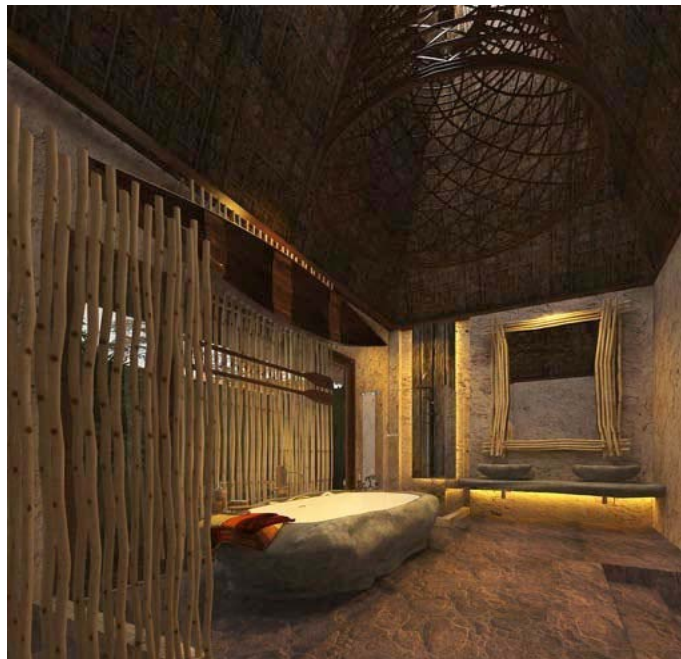




Massage room



Lobby of the spa





Suites draw upon tribal designs and the natural surroundings, with a splash of modern style.



Restaurant



Bird's nest lounge area.



Villa with outdoor bathtub and rainfall shower.

