
Thailand News

April 2017

CONTENTS

- Project 1: Open House (Co-working Space, Bangkok)
-

1. OPEN HOUSE

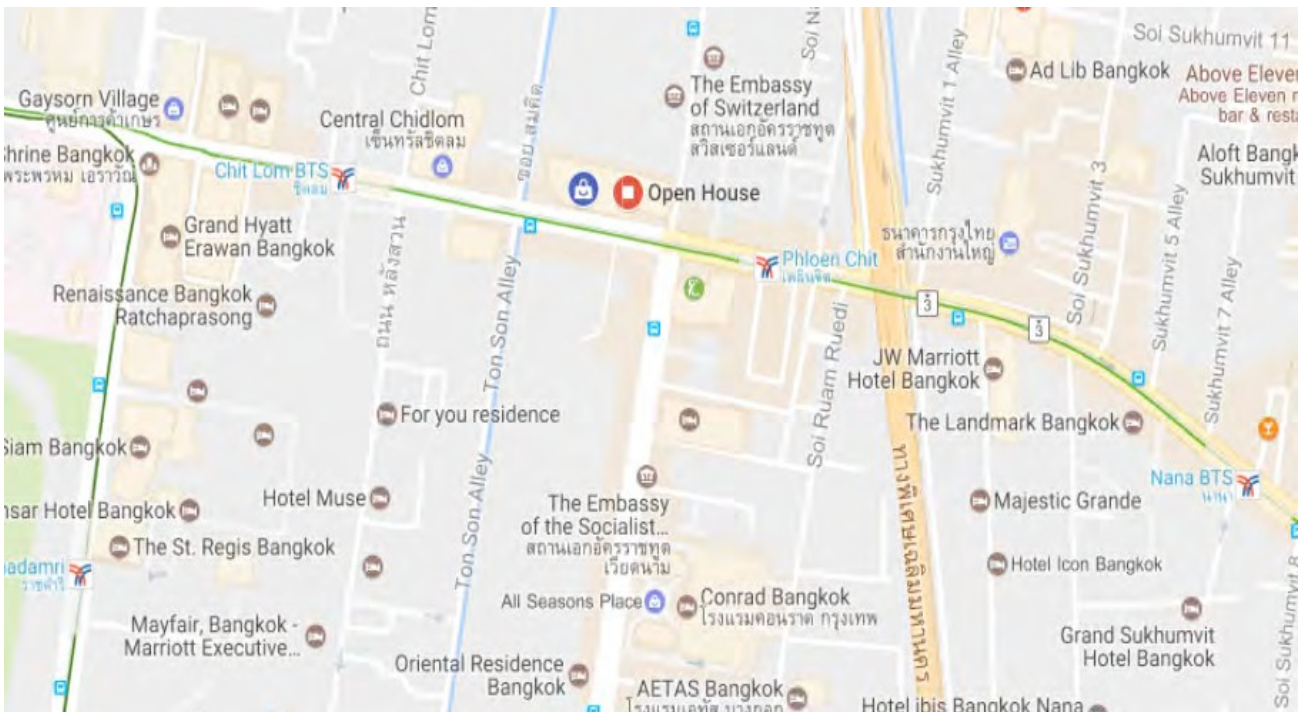
Project Overview

Open House is a fit-for-all space curated to serve everybody's tastes. Designed by Tokyo-based Klein Dytham Architecture, the collective place was designed to be multipurpose. It is divided into 8 zones, including Eating Deck, Eat by the Park, Open House Bookshop by Hardcover, Co-Thinking Space, Art Tower, Design Shop, Open Playground and Diplomat Screens Embassy by AIS.

Project Details

1. **Type of Business:** Co-working space
2. **Open Date:** 25/03/2017
3. **Concept:** Multipurpose, collective space curated to serve everybody's tastes.
4. **Location:** Level 6, Central Embassy shopping mall, Bangkok
5. **Size:** 7,000 sq.m.
6. **Interior Designer:** Klein Dytham Architecture (KDa from Tokyo); www.klein-dytham.com
7. **Project Designers (Interior):** Daikanyama T-Site; <http://real.tsite.jp/daikanyama/english>, and Ginza Place; www.ginzaplace.jp
8. **Website:** www.centralembassy.com/anchor/open-house

Location map



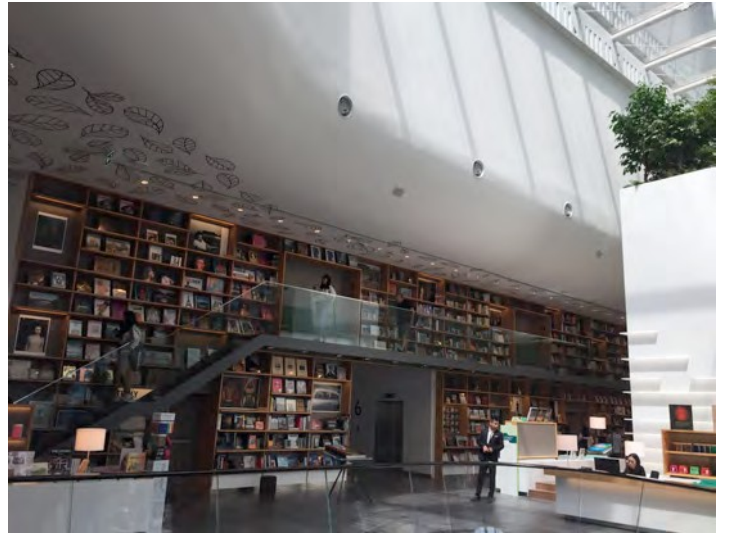
Open House is located on level 6 of Central Embassy shopping mall, accessible by skywalk from BTS Ploenchit skytrain station.



For the design, Central Embassy teamed up with Japanese design company Klein Dytham architecture (KDa), with Daikanyama T-Site and Ginza Place as project designers for the interior design.

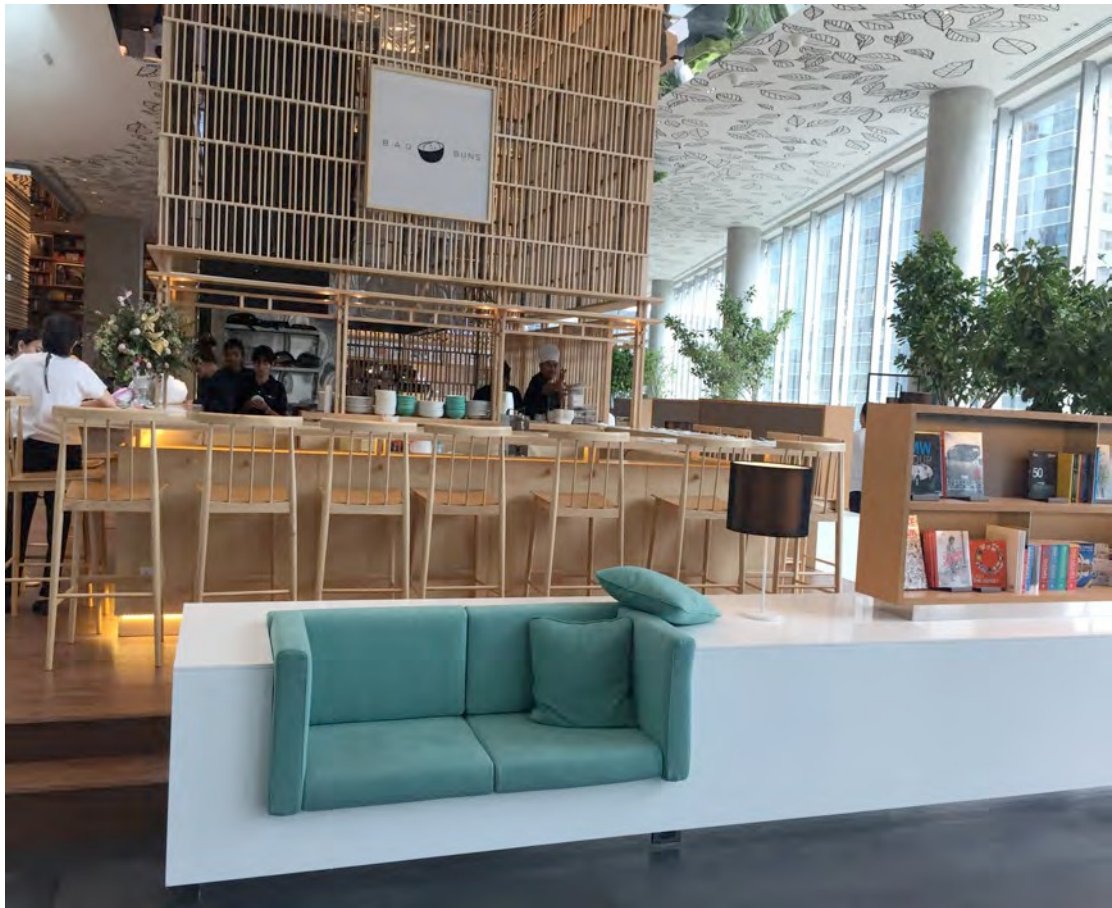


Open House bookshop by HARDCOVER

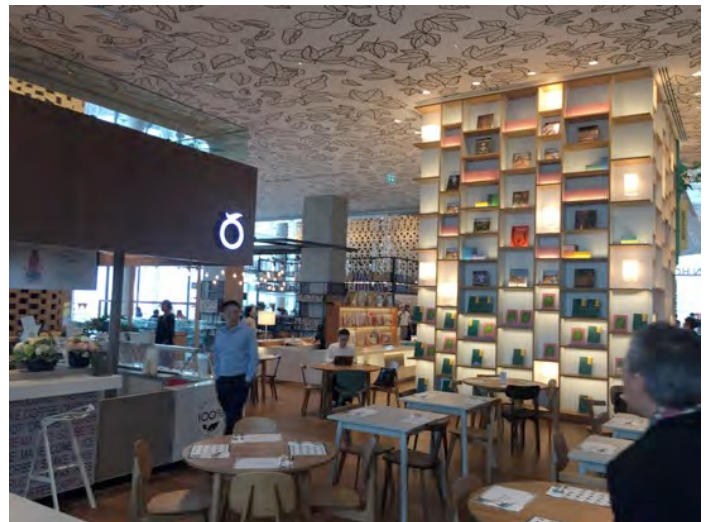


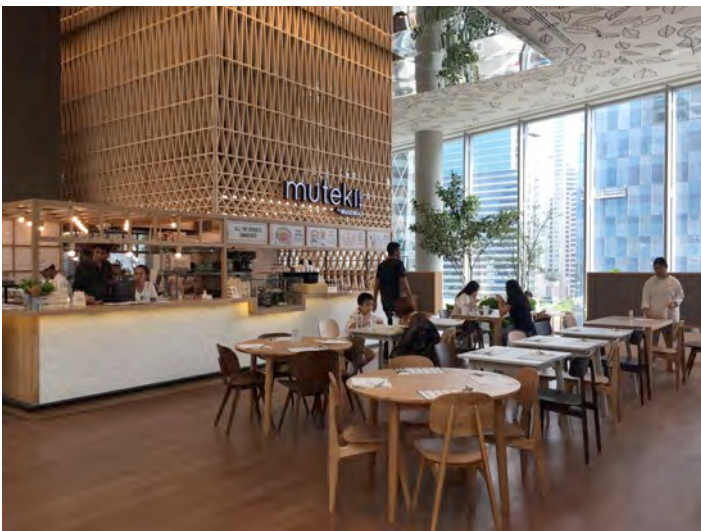


Covering the entire top floor, Central Embassy Open House offers 7,000 sqm of open-concept “co-living space” beneath high ceilings, with glass panels all around offering city views.



As well as a co-working space, Open House offers a restaurant, lounge, bar, bookshop, art gallery, design shop and children's playground, nestled against the Embassy Diplomat Screens cinema.





The dining areas offer a variety of delicacies, sweets and drinks from Lady Nara, Peppina, Rico, Bao and Buns, Broccoli Revolution Embassy, Egg My God, Movenpick Ice-Cream, Muteki by Mugendai, Paris Mikki, the Casks, the Meat Bar and the Raw Bar.



