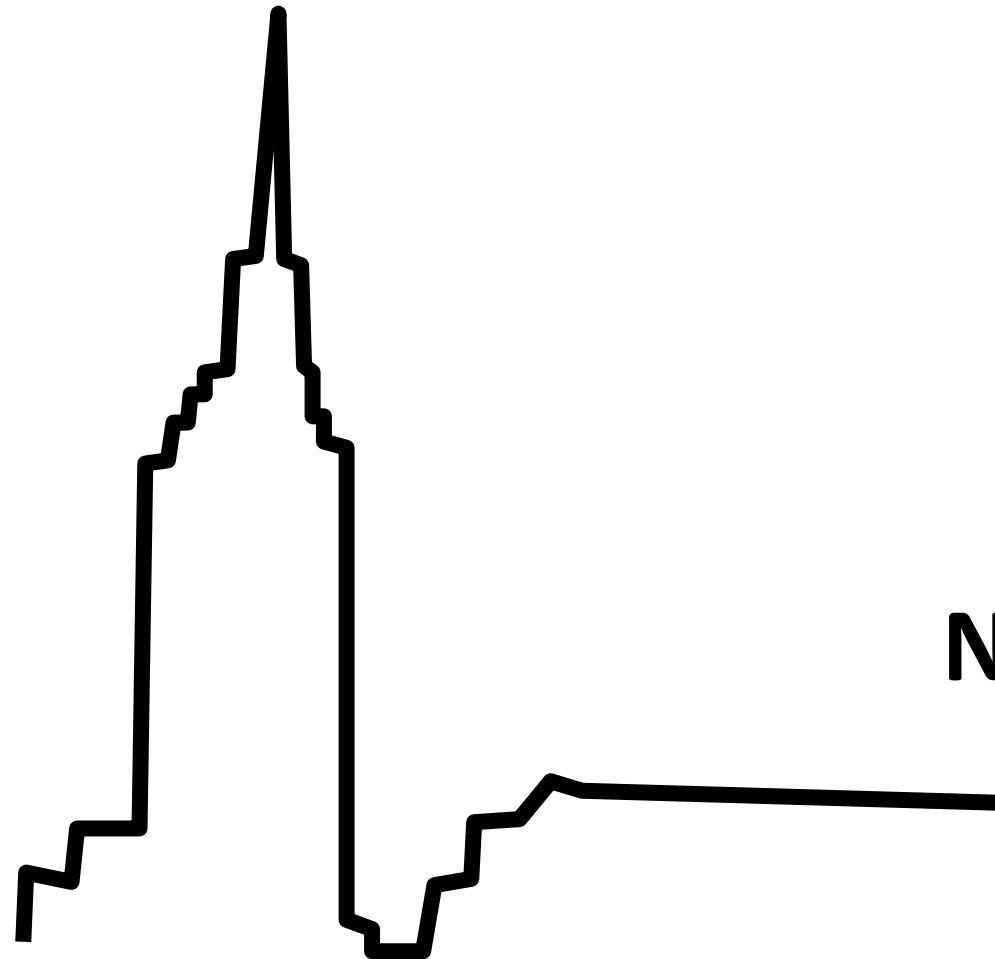


- The NoMad Hotel
- Refinery Hotel
- Forty Four
- The Knickerbocker
- The Mansfield Hotel
- Room Mate Grace Hotel
- W Times Square
- The Benjamin Hotel
- Citizen M Hotel
- 1 Hotel Central park
- Viceroy Hotel
- Ace Hotel
- Edition Hotel
- The Ludlow Hotel
- Crosby Street Hotel
- SIXTY Soho
- Soho Grand Hotel
- Hotel Hugo
- Americano Hotel
- Yotel
- The Mark Hotel



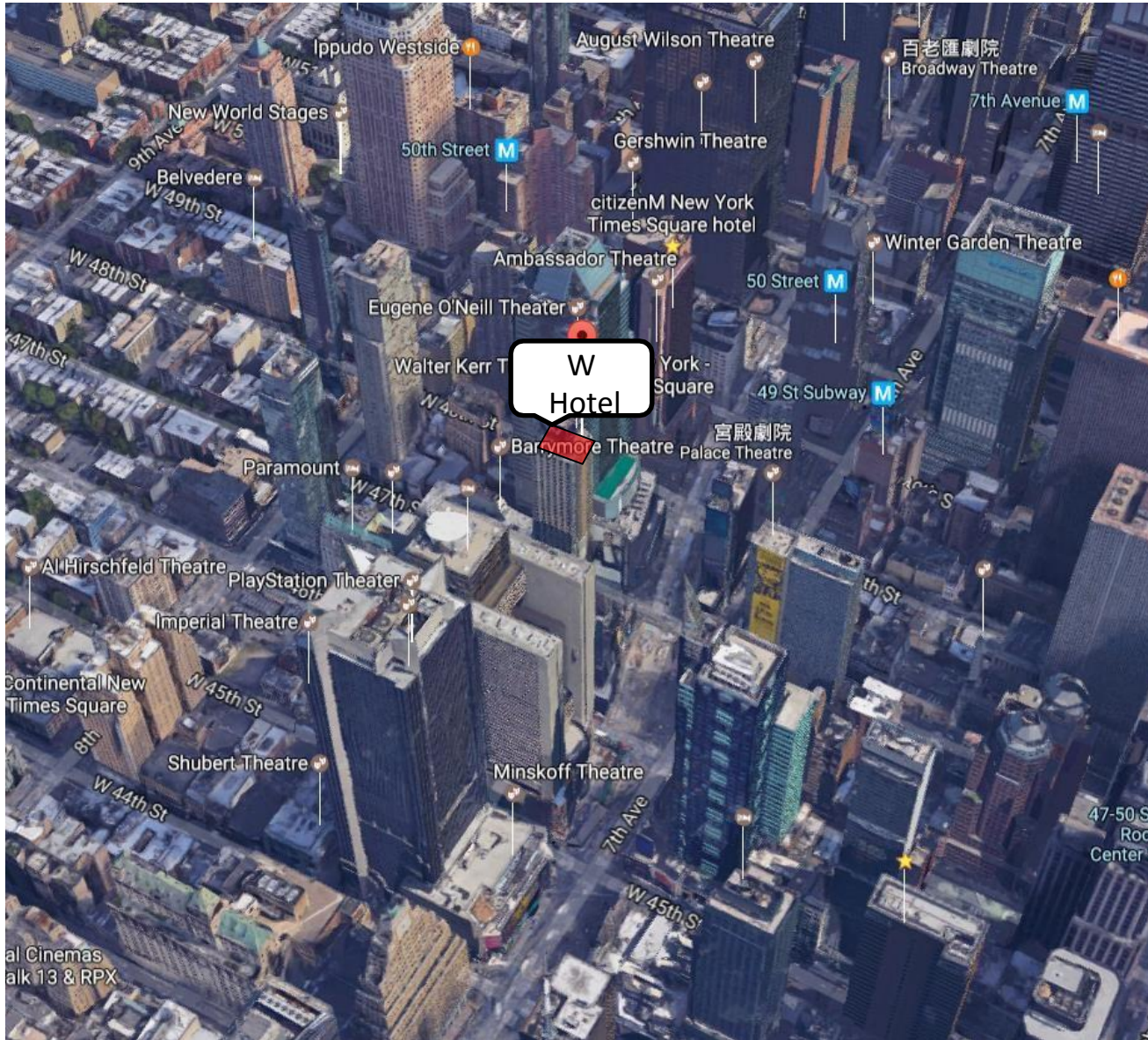
NEW YORK HOTELS

Inspection Report

VOL. 3 of 7

Room Numbers : 509

In the Hotel : Front Desk, Lobby, Restaurant, Bar / Lounge, Luggage Storage, Fitness Centre



	Season Price	sqm	Bed Type
Wonderful / Spectacular Room	US\$ 229 ~ US\$ 533	27 sqm	King Bed
Wonderful / Spectacular Double Room	US\$ 241 ~ US\$ 549	27 sqm	2 Double Beds
Cool Corner Room	US\$ 280 ~ US\$ 589	27 sqm	King Bed
Fantastic Suite	US\$ 326 ~ US\$ 624	58 sqm	King Bed & 1 Sofa Bed
Marvelous Suite	US\$ 359 ~ US\$ 649	58 sqm	King Bed & 1 Sofa Bed
Wow Suite	US\$ 1334 ~ US\$ 1529	111 sqm	1 King Bed & 2 Double Beds
Extreme Wow Suite	US\$ 2141 ~ US\$ 2294	111 sqm	1 King Bed Add: 2 Double Beds (Connect to Spectacular Double Room)

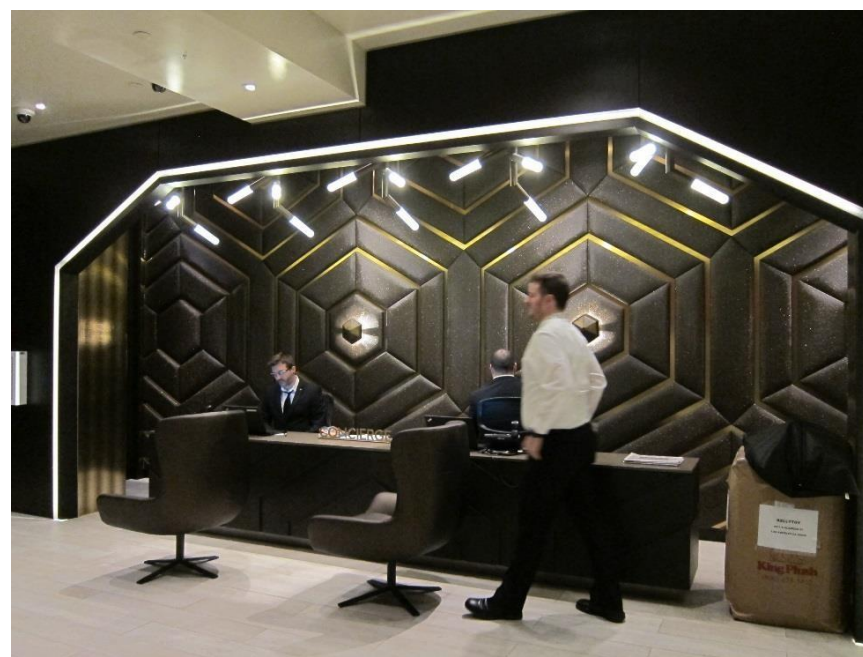
Address : 1567 Broadway, New York, NY 10036



7 W Times Square



Lift Lobby Entrance with water Ceiling :

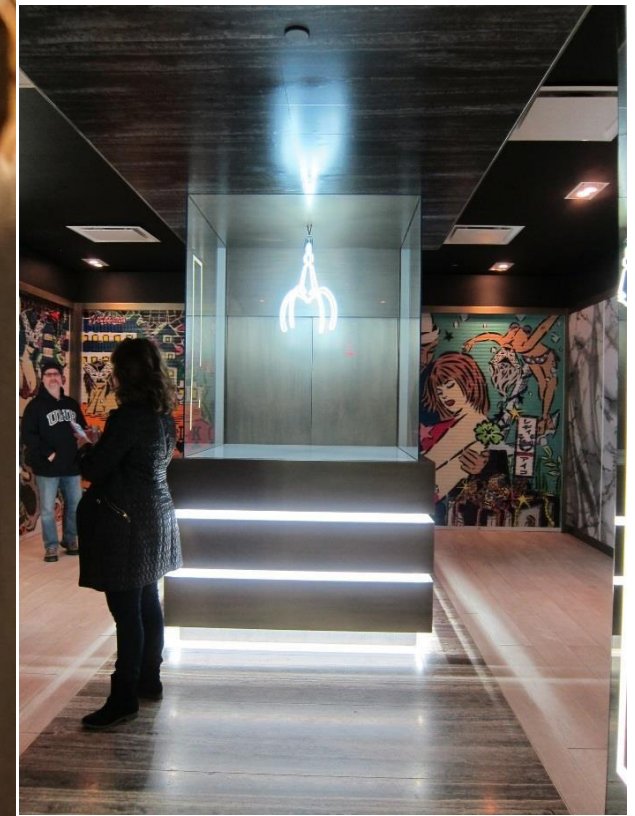


Front Desk :



Lift Lobby :

Yabu Pushelberg, the firm responsible for the initial, iconic, W Times Square design has come back nearly a decade later to re-do its guestrooms.



Bar / Lounge :

The Bar located adjacent to the lobby is created by Josh Held -Design in partnership with Starwood's award-winning design team, It call Living Room bar. he Living Room is a sultry, yet playful tribute to the Times Square of the past. With lighting and special touches that change throughout the day, With an electric design and vibrant energy.

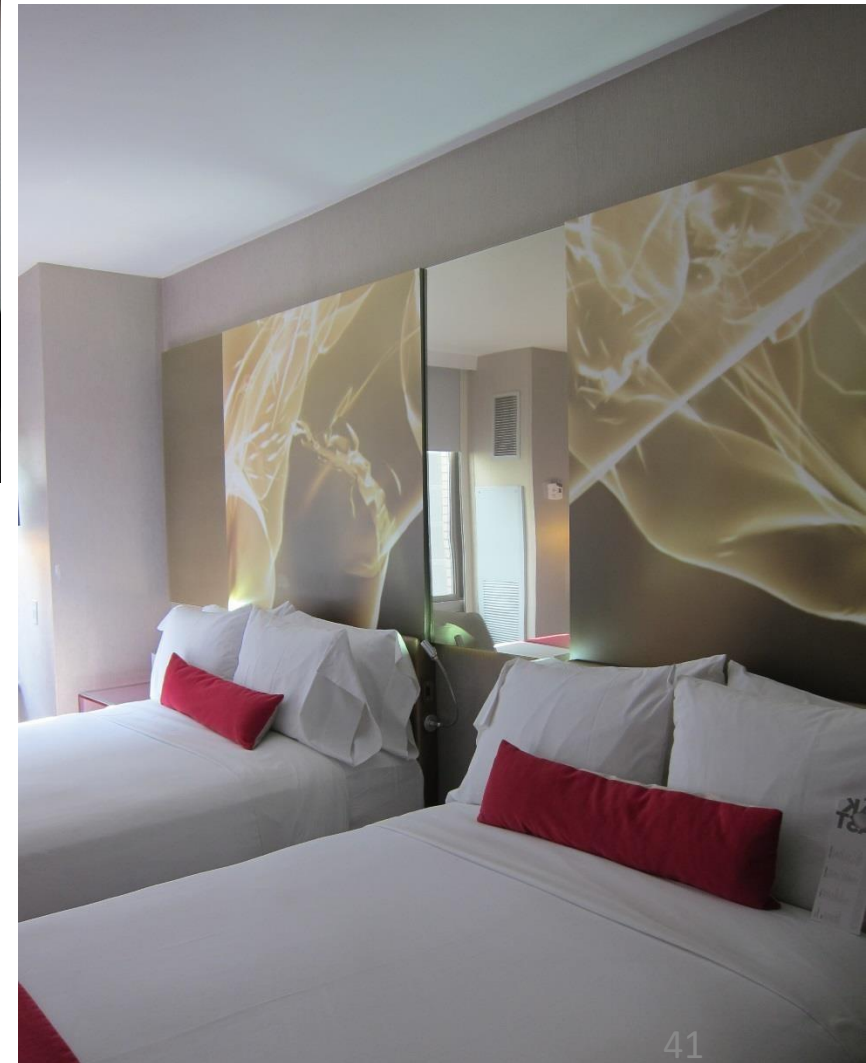
The metal screen, modeled after stage curtains in reference to the nearby theater district. Smoked bronze glass, velvet fabric, and high-gloss lacquers paint the face of the lounge with an aesthetic that is undeniably New York.





Wonderful /
Spectacular Room :

Wonderful / Spectacular
Double Room :



Writing Desk & Mini Bar & TV Cabinet :



Bathroom :

New design features in the bathrooms echo the aesthetic of guestrooms, making the space feel more expansive with sultry frosted glass doors and walls. The closet, washed in a bold flash of color, has been designed to fully organize guests' wardrobes.

Wonderful / Spectacular Room :



King Bed

Bathroom

Bathroom



2 Double Beds

Wonderful / Spectacular Double Room :

Cool Corner Room
(Time Squire View) :



King Bed

Bathroom



Cool Corner Room
(Hudson View) :

Fantastic Suite :

King Bed

Bathroom



Bathroom

Bathroom

Wow Suite :

King Bed

2 Double Beds



Extreme Wow Suite :



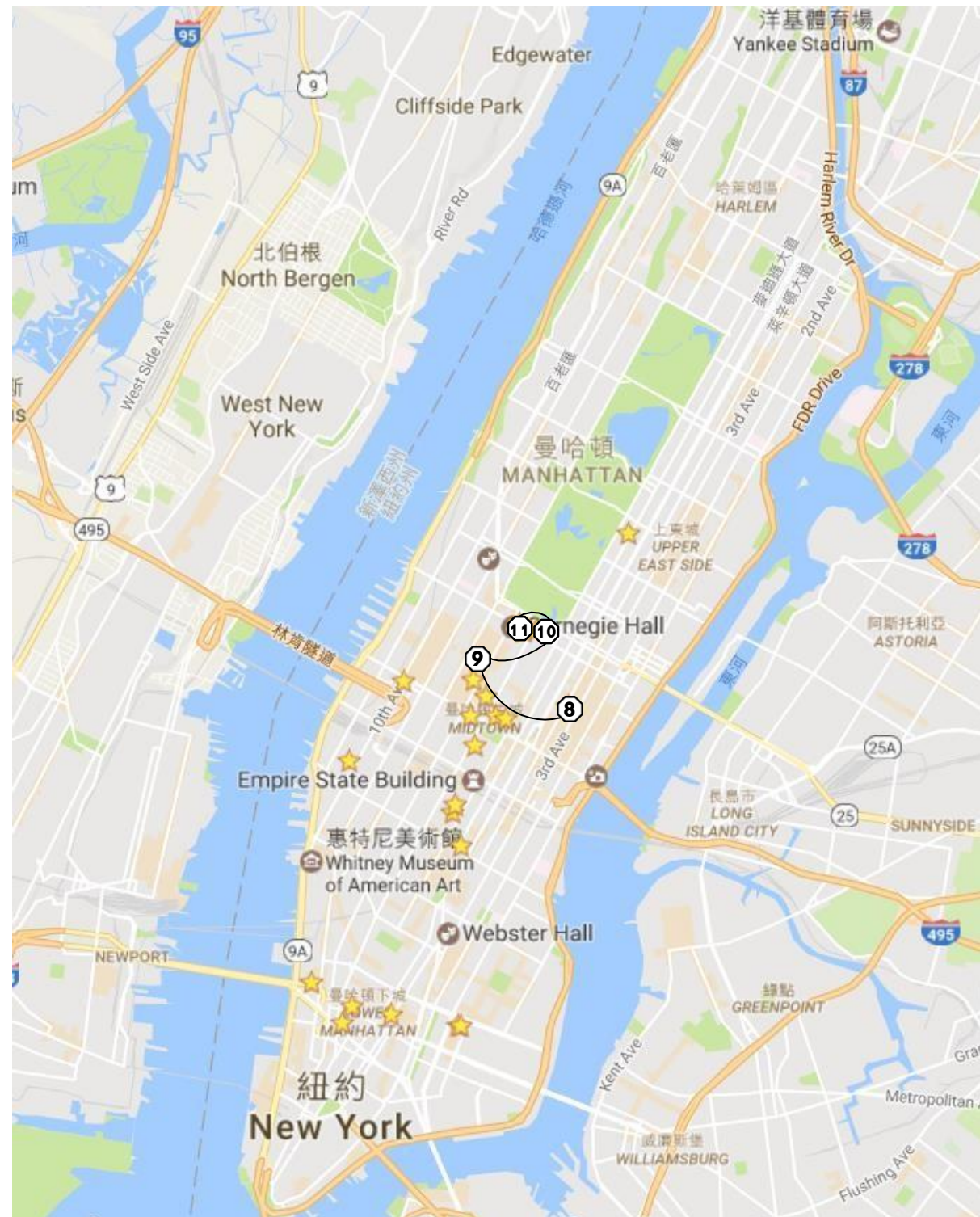
MID-TOWN

8) The Benjamin Hotel

9) Citizen M Hotel

10) 1 Hotel Central park

11) Viceroy Hotel

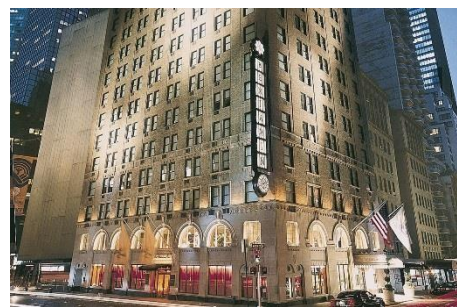
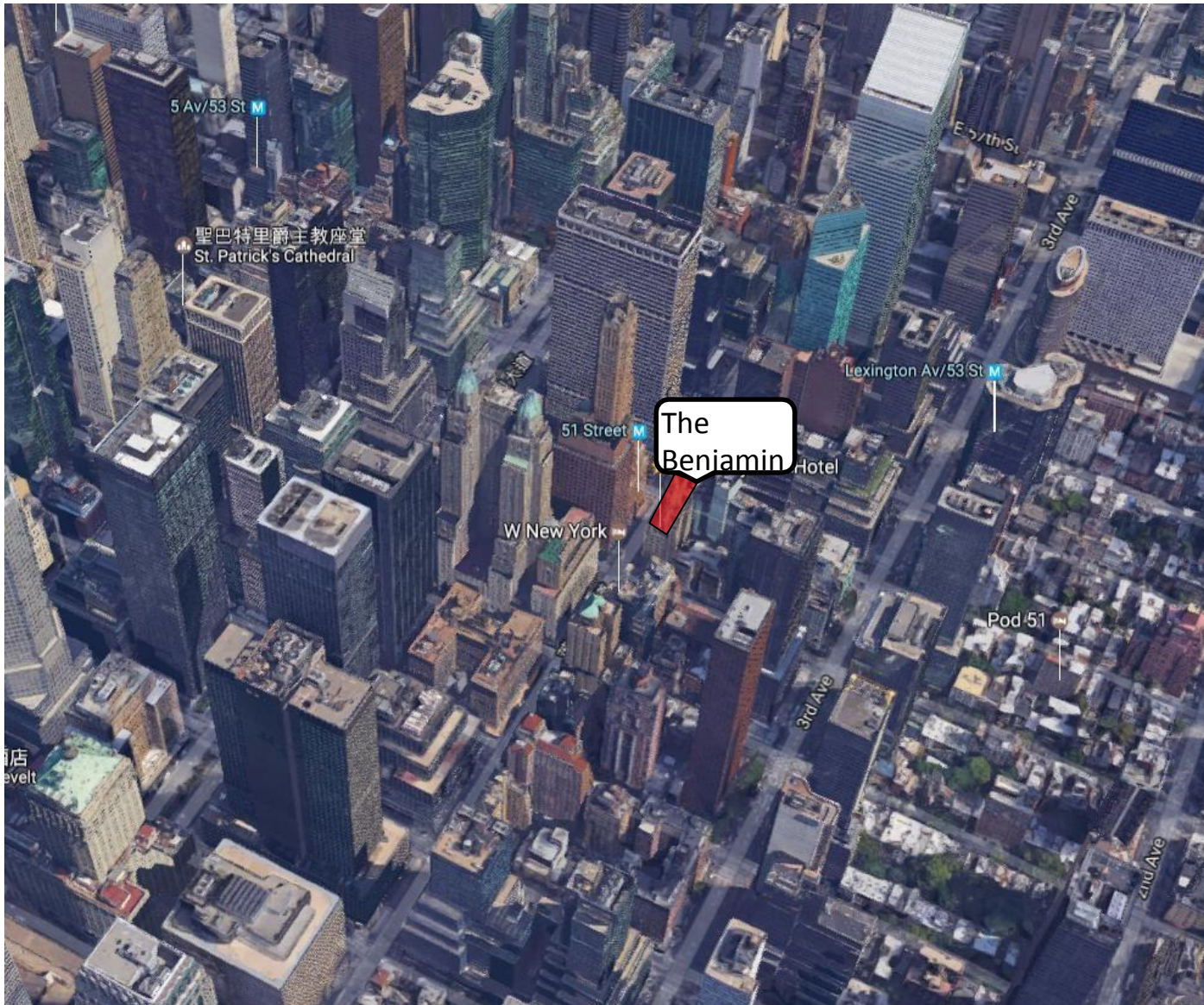


Room Numbers : 209

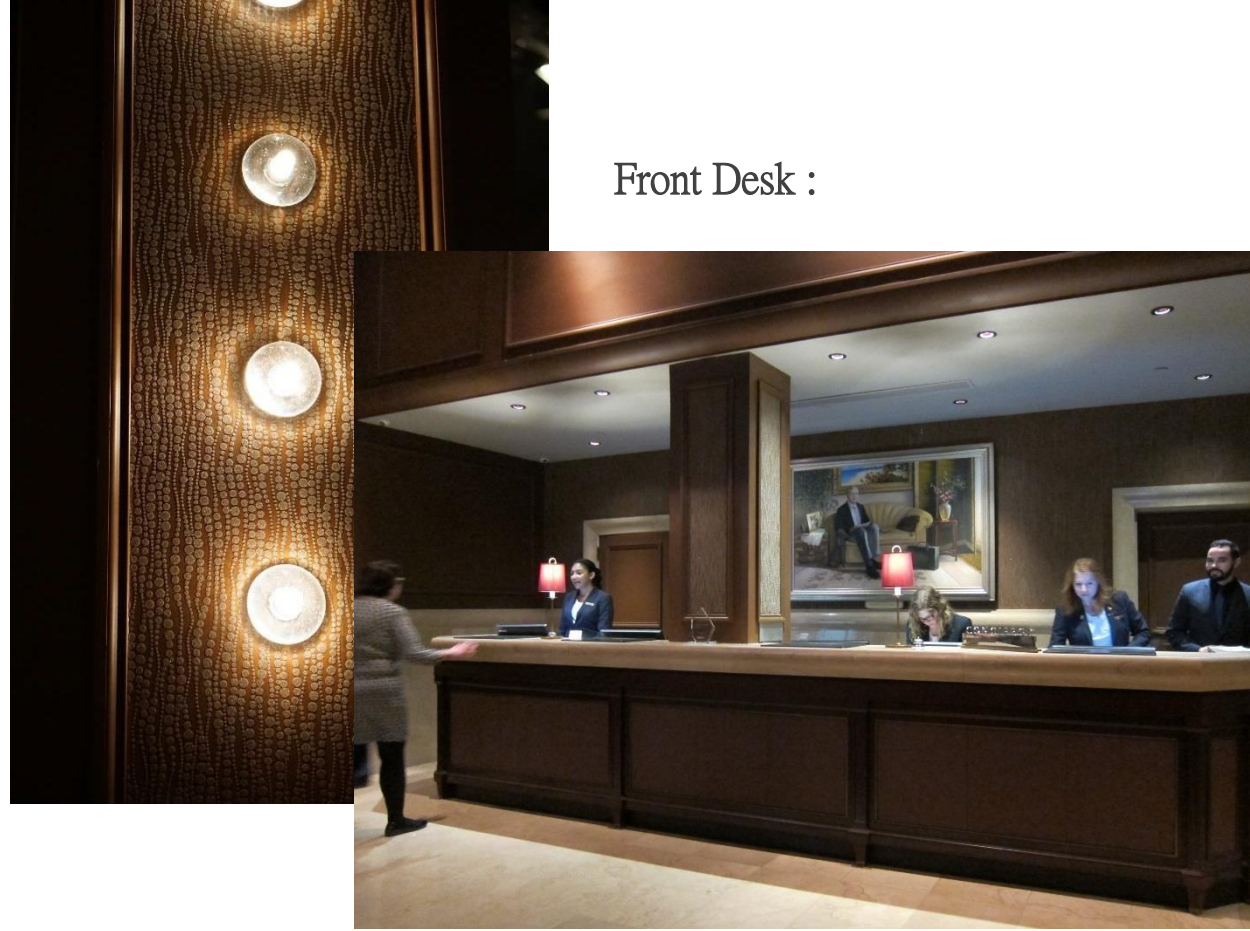
In the Hotel : Front Desk, Lobby Lounge, Restaurant, Bar / Lounge, Luggage Storage, Fitness Centre, Business Centre, Spa & Wellness Centre

	Season Price	sqm	Bed Type
Guest Room	US\$ 335 ~ US\$ 713	22.5 ~ 25 sqm	1 Queen Bed
Deluxe Studios Two Queen or Double Room	US\$ 362 ~ US\$ 761	27 ~ 32 sqm	2 Queen Beds / 2 Double Beds
Deluxe Studio King	US\$ 352 ~ US\$ 751	27 ~ 32 sqm	King Bed
One bedroom Suite	US\$ 409 ~ US\$ 808	40 ~ 50 sqm	King Bed / Queen Bed
One Bedroom Deluxe Suite	US\$ 504 ~ US\$ 999	50 ~ 74 sqm	King Bed
One Bedroom Deluxe Suite	US\$ 1380 ~ US\$ 1800	146 sqm	King Bed

Address : 125 East 50th Street, Midtown East, New York, NY 10022



8 The Benjamin Hotel



Front Desk :

Lobby :

The Rockwell Group and James Mohn Design Studio to refresh the interior of this timeless gem.





Bar / Lounge :

Inspired by the grand cafés of Europe and classic American dining rooms, The National has a both welcoming and refined feel, a welcoming respite from the bustling atmosphere of the area.

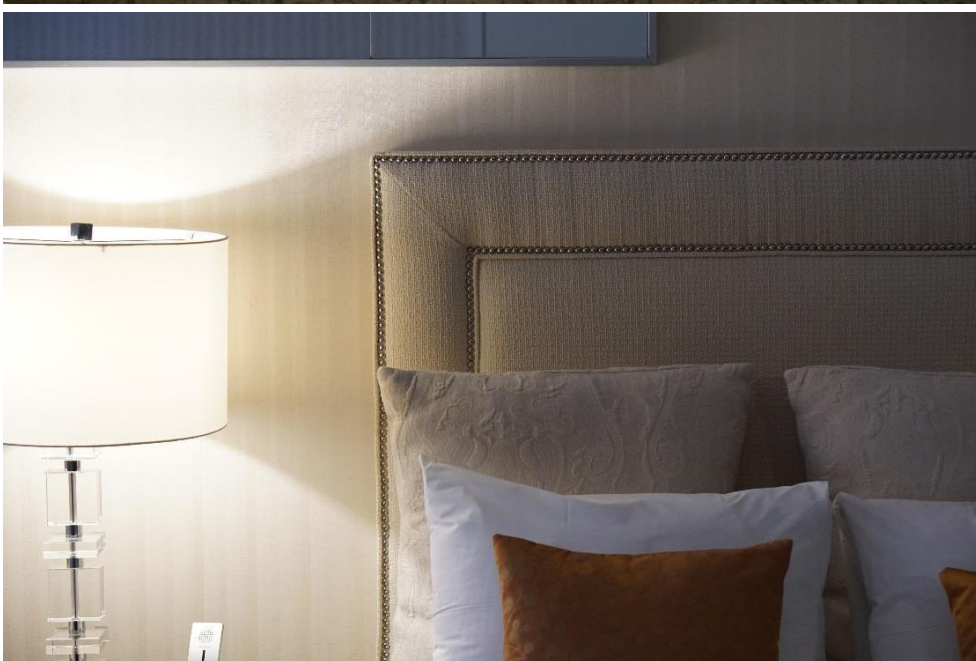




Study Room :

Restaurant :

Cabinet :



HeadBoard with Fabric :



Guest Room :

Suites and guest rooms are luxuriously furnished and include custom armoires, oversized club chairs and sleep sofas. Guest rooms are decorated in warm tones, with fabrics of soft chenille, mohair and linen, and mahogany-finished furniture. Galleys feature single-serve coffee makers, microwaves, glass door cabinets and granite countertops.



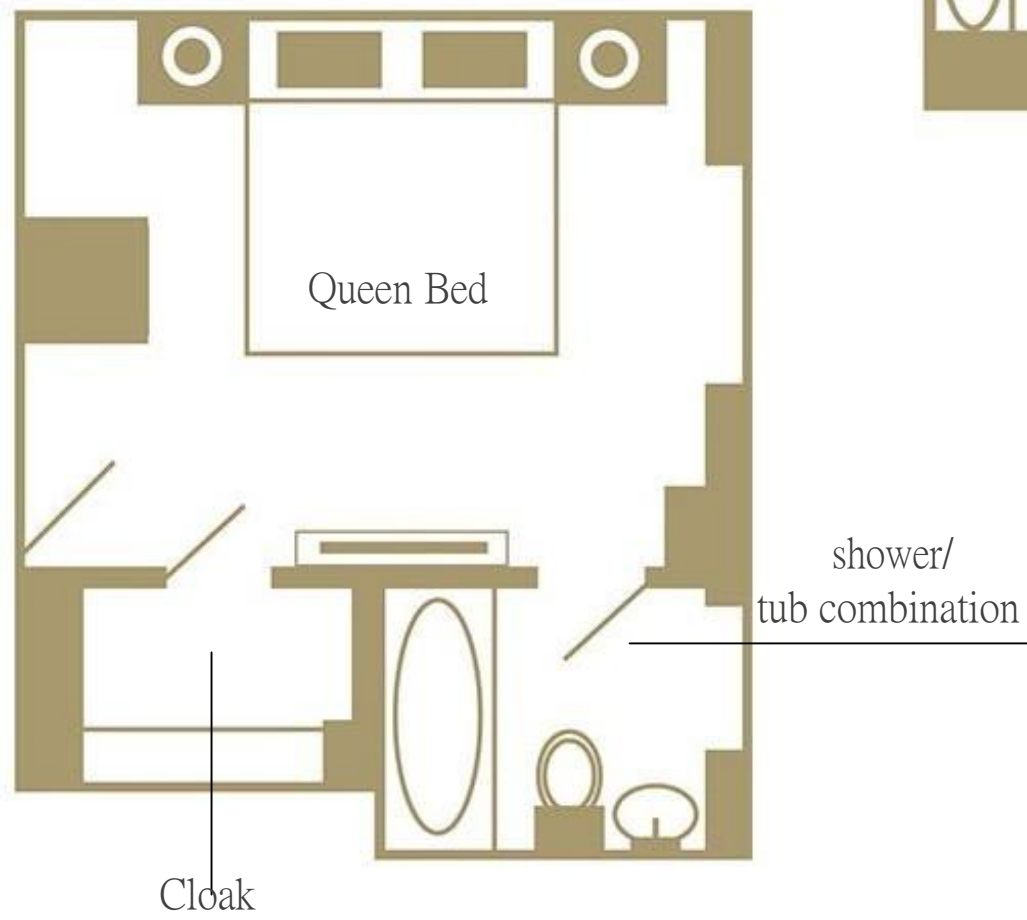
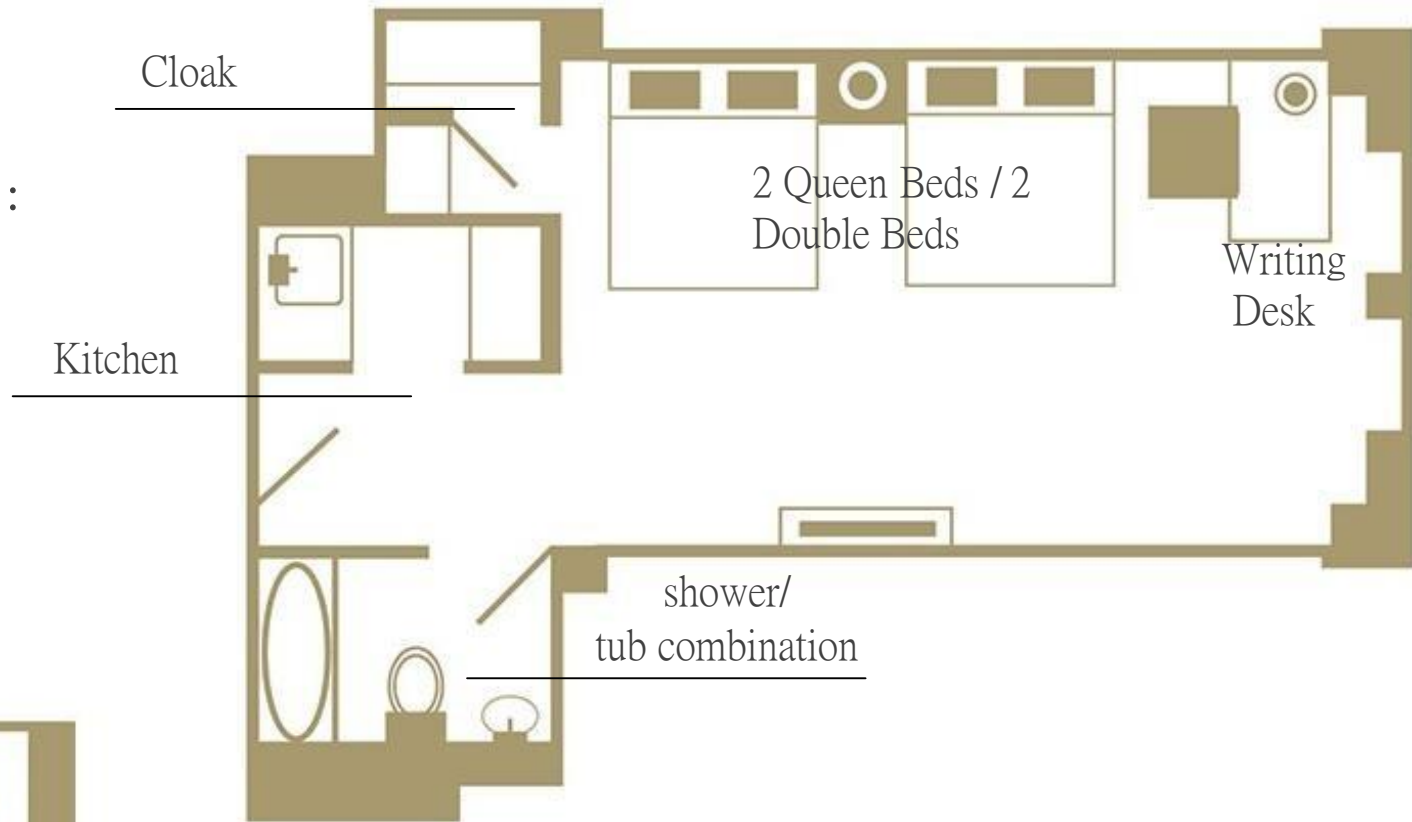
Bathroom :

Deluxe Studios Two Queen or Double Room :

Sink in Mini Bar :

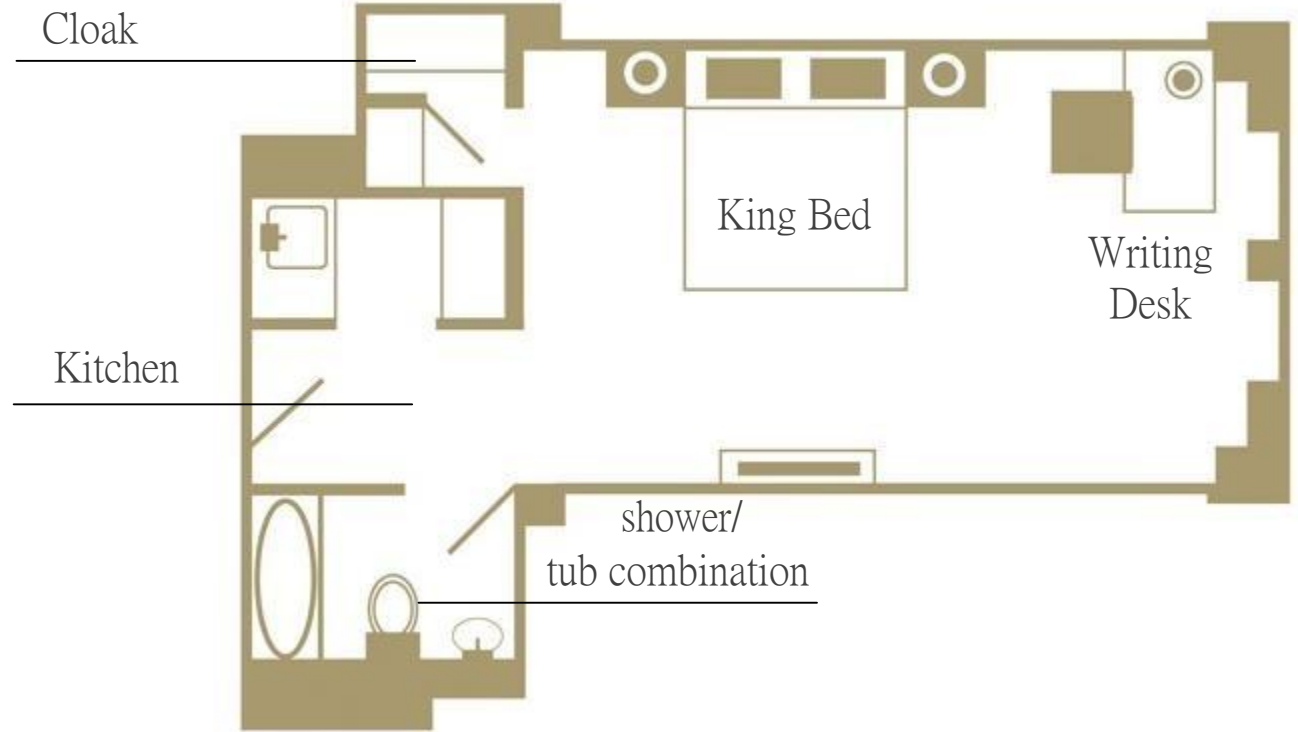
Guestroom Door :

Deluxe Studios Two Queen or Double Room :



Guest Room :

Deluxe Studio King Room :



Cloak

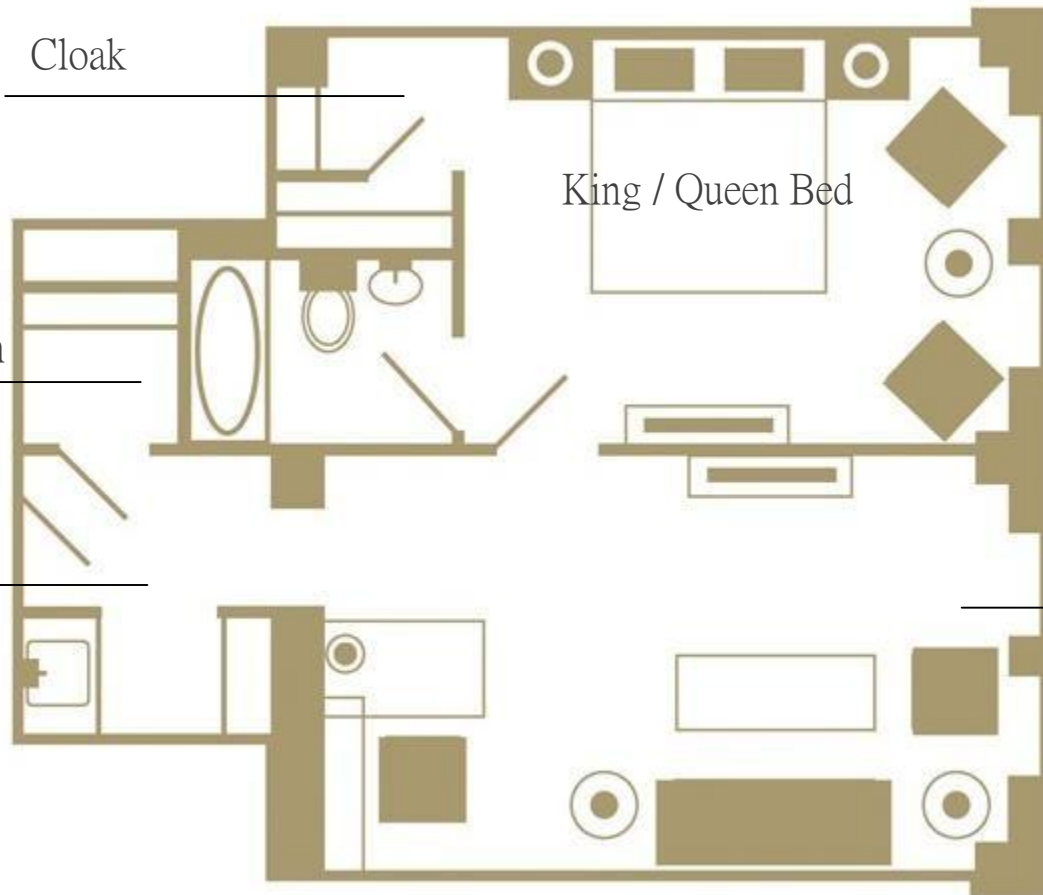
King / Queen Bed

One Bedroom Suite :

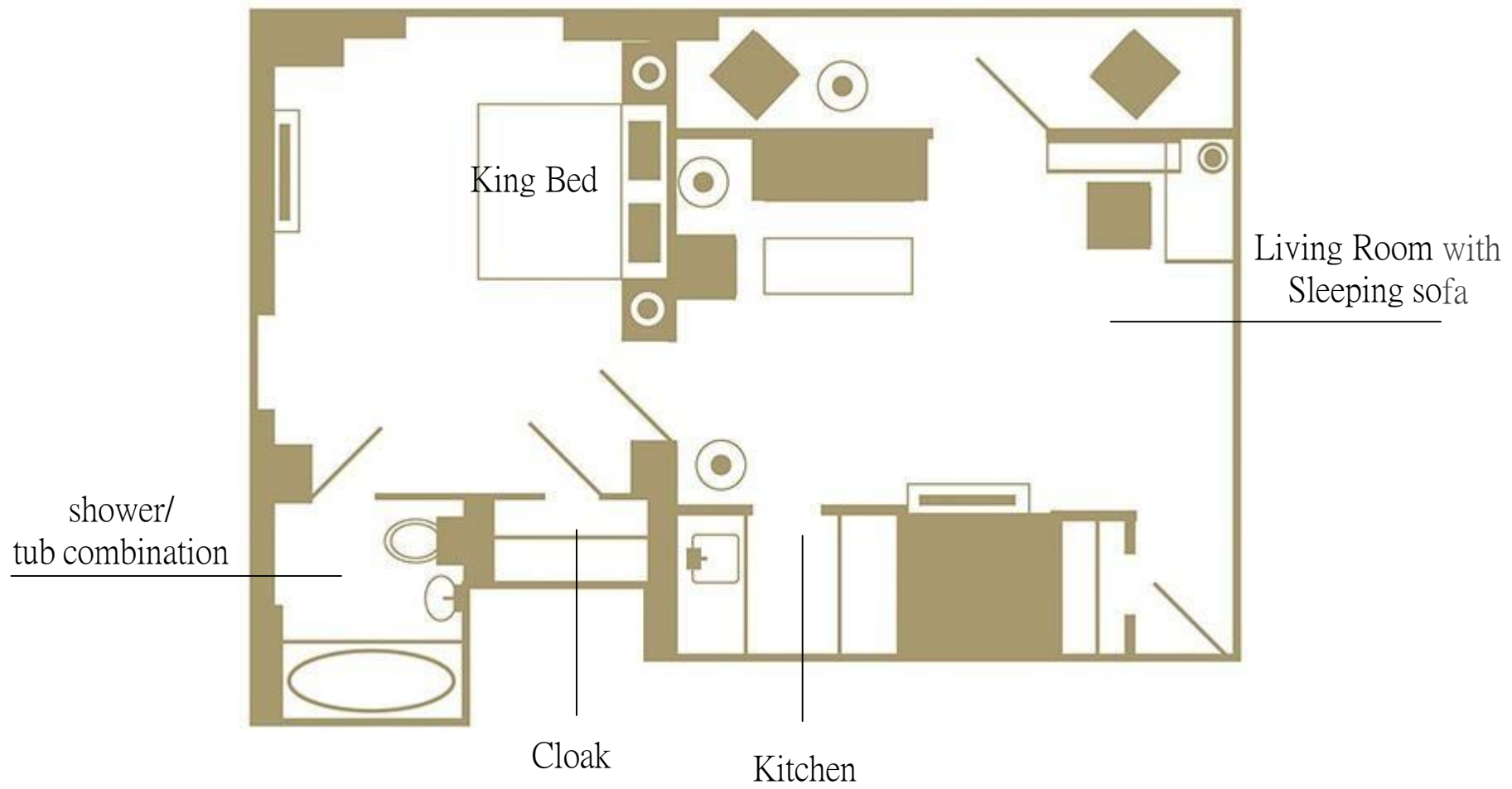
Living Room with
Sleeping sofa

shower/
tub combination

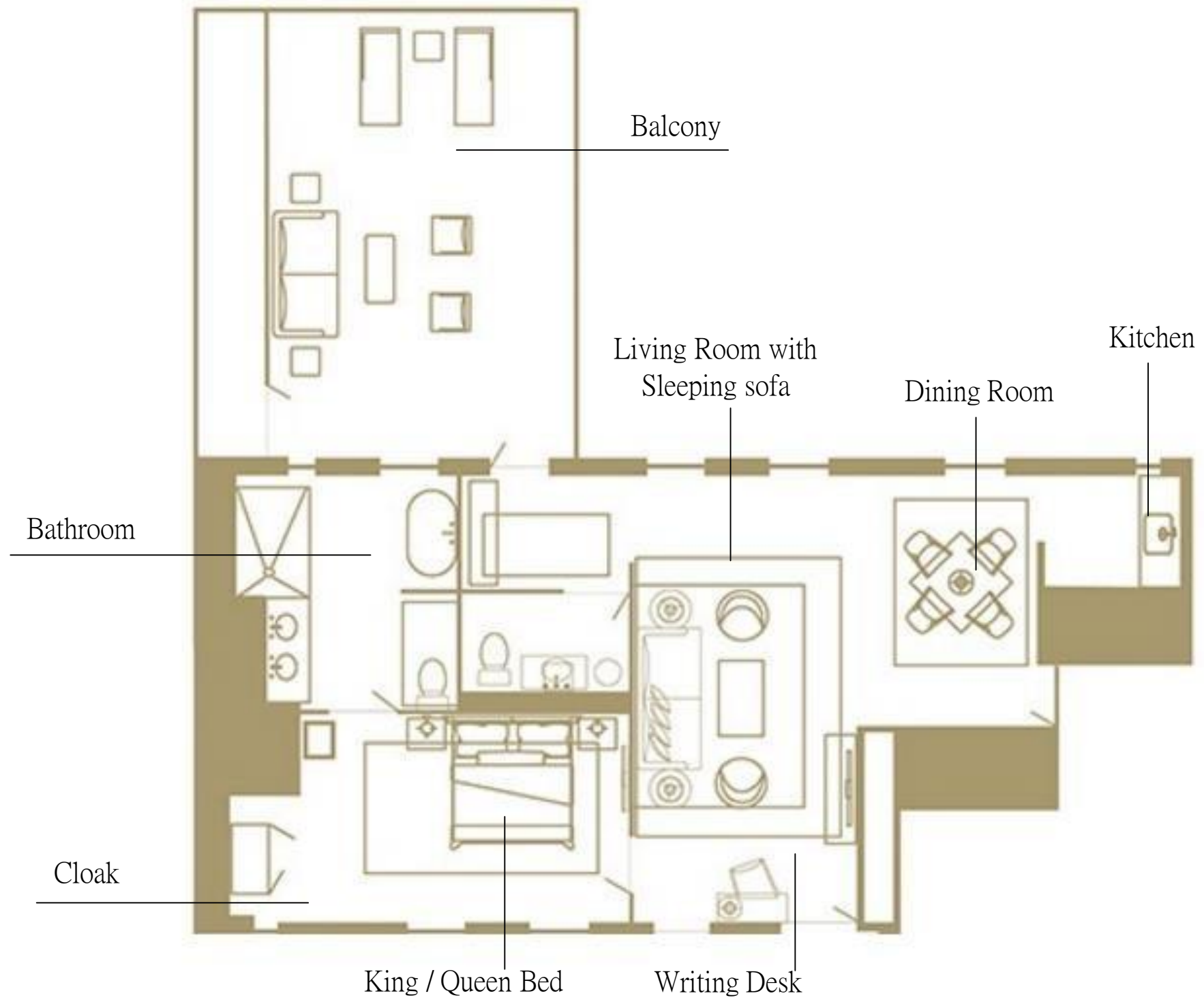
Kitchen



One Bedroom Deluxe Studio :



The Benjamin Suite :



9

CitizenM Hotel

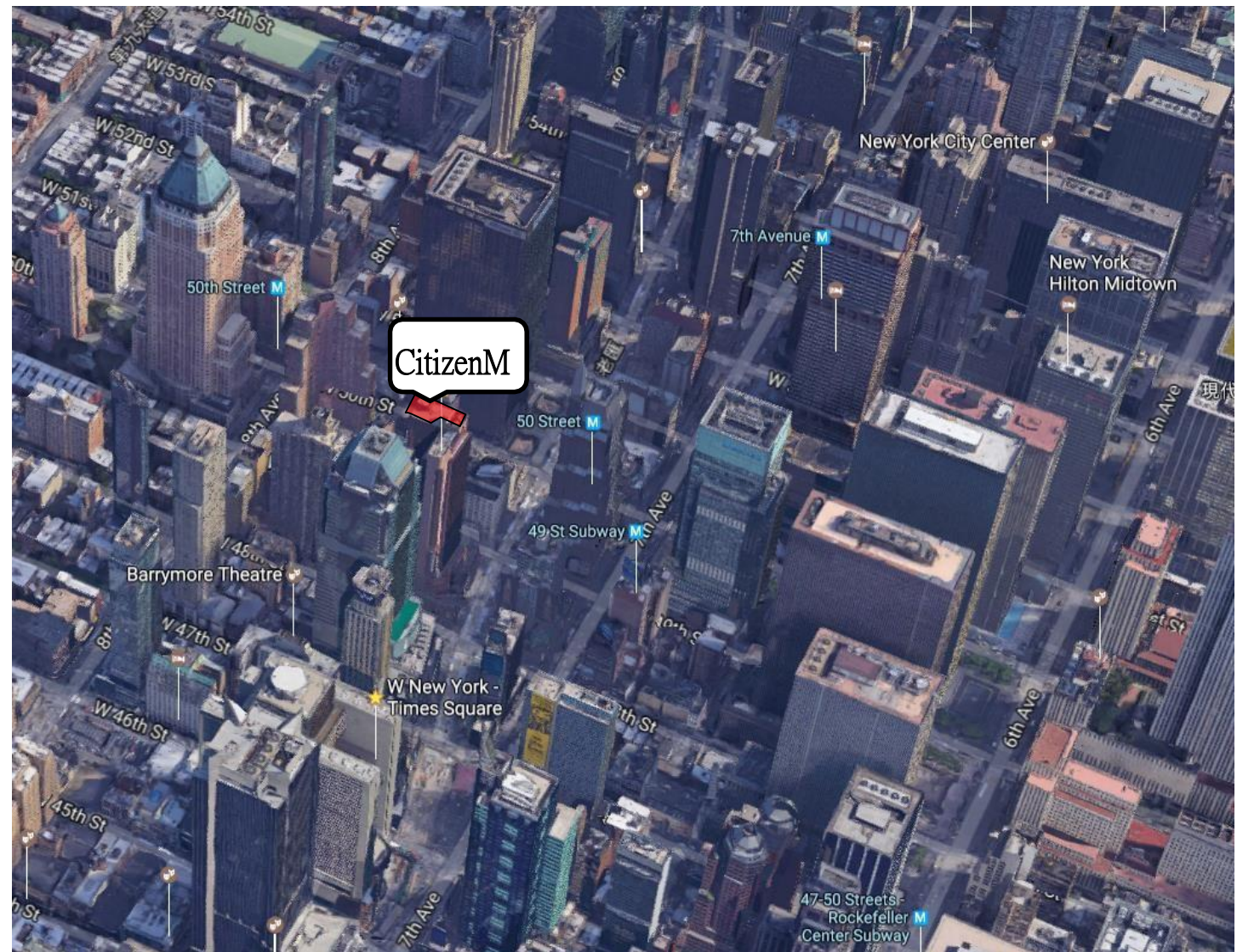


Room Numbers : 230

In the Hotel : Front Desk, Lobby, Bar, Snack bar,
Rooftop bar, Fitness Centre, Business Centre,
Luggage Storage

	Season Price	sqm	Bed Type
Double Room	US\$ 299 ~ US\$ 369	16 sqm	1 Double Bed
Single Room	US\$ 299 ~ US\$ 369	16 sqm	1 Single bed

Address : 218 West 50th Street, New York, NY
10019

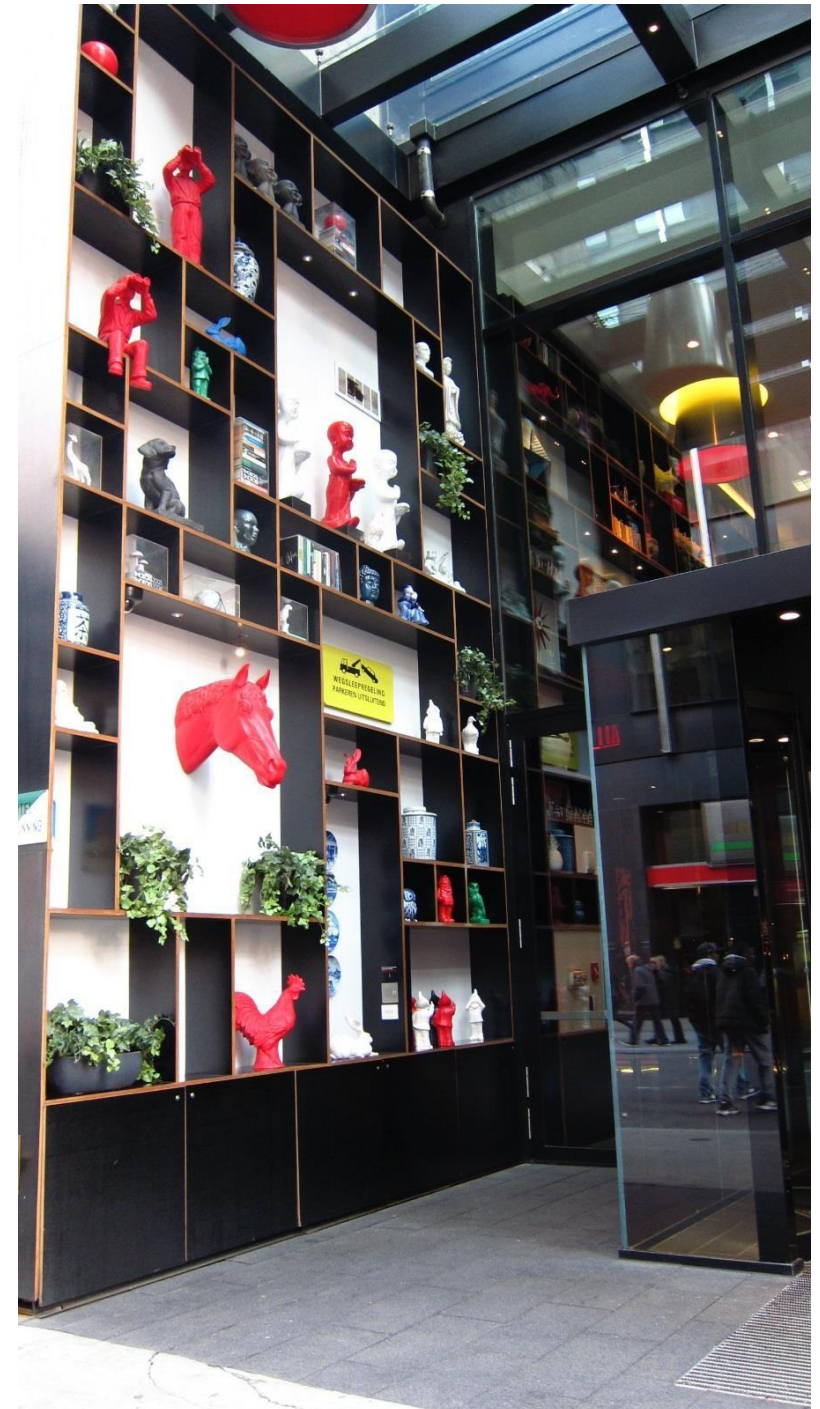


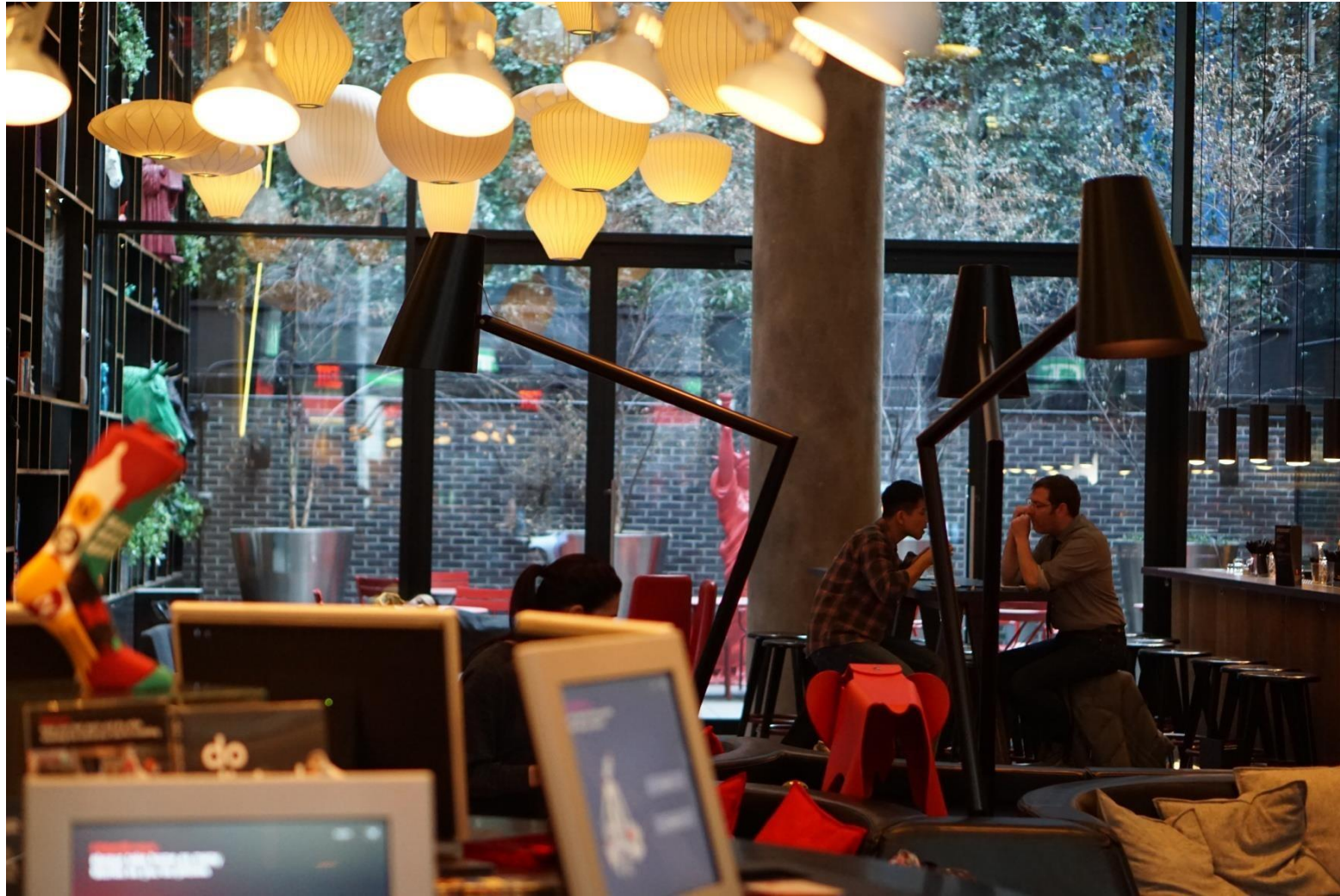


Concrete Facade :

The innovative Dutch-based hotel chain citizen.

Entrance Facade :





The hotel lobby acts as a central hub for guests and locals, with an oversized living room design, soaring 26-foot ceilings, and floor-to-ceiling bookshelves showcasing an eclectic mix of art and objects from around the world.

Auto Check-in Front Desk :

Lobby :





Bar / Lounge :

Official furniture partner Vitra is showcasing its latest collection in all public areas.

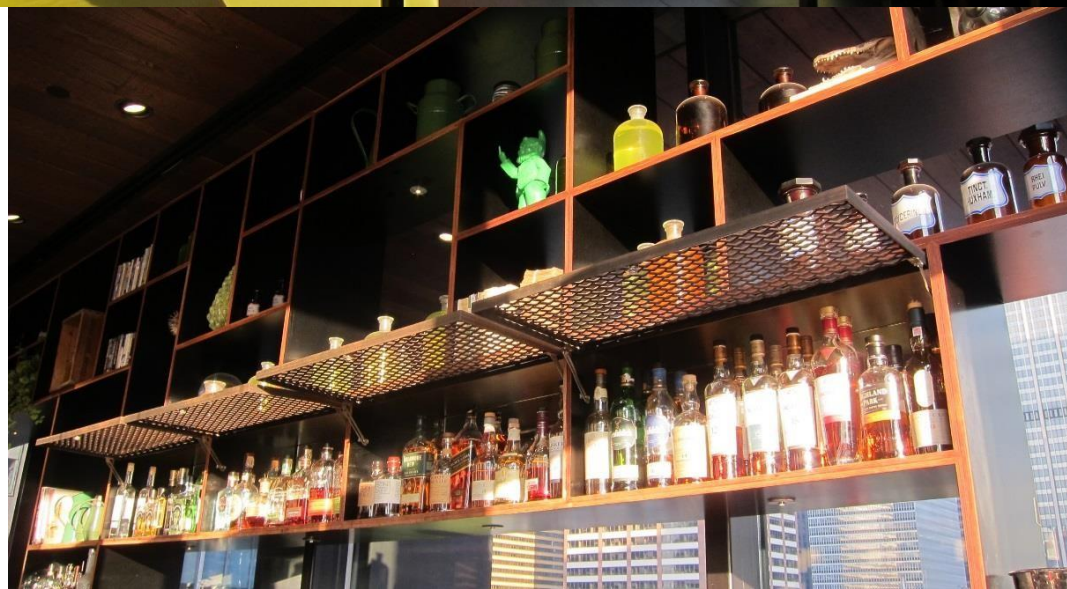


Lobby / Cafe :



Snack Bar :

Rooftop bar :



Outdoor bar :



Floor Corridor:



Single Room :

A modern, ingeniously designed rooms appointed with cutting-edge technology features and cool contemporary artwork along with a ground- breaking list of facilities.



Small Room :

