



**THE HOTEL DESIGN REPORTS
of NYC**

- 1 Hotel Central park
- Viceroy Hotel
- Ace Hotel

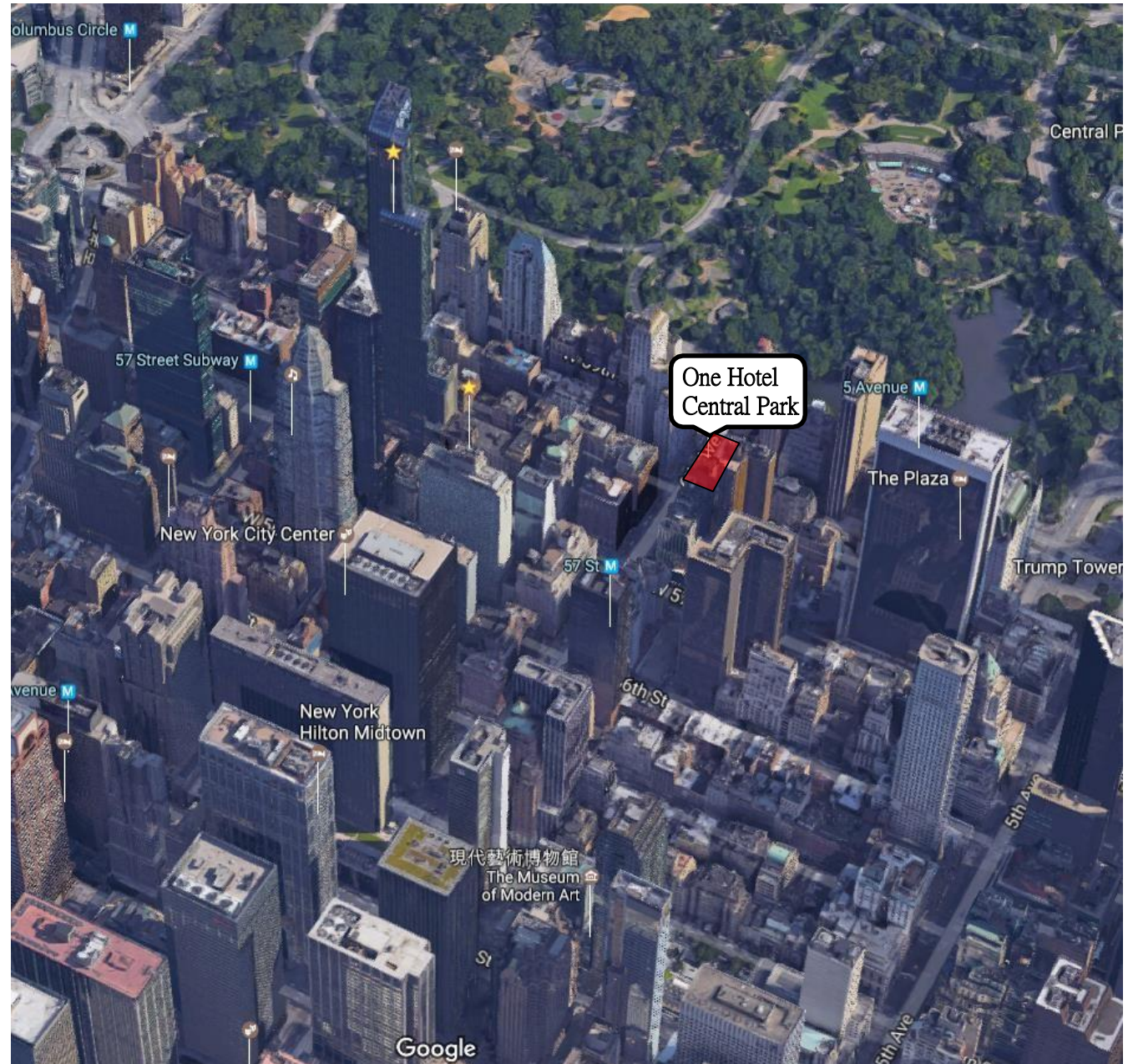


10 One Hotel Central Park

Room Numbers : 229

In the Hotel : Front Desk, Lobby, Restaurant, Snack bar, meeting facilities, Fitness Centre, Luggage Storage

	Season Price	sqm	Bed Type
Queen Room	US\$ 379 ~ US\$ 460	13 sqm	1 Bunk Bed
King Room	US\$ 400 ~ US\$ 475	23 sqm	1 Super King Bed
Deluxe King Room with City view	US\$ 410 ~ US\$ 482	18 sqm	1 Super King Bed
Superior King Room with City View	US\$ 428 ~ US\$ 505	25 sqm	1 Super King Bed
Superior King Room with Park View	US\$ 505 ~ US\$ 587	25 sqm	1 Super King Bed
Junior Suite	US\$ 499 ~ US\$ 580	29 sqm	1 Super King Bed
Superior Double Room with Two Double Beds	US\$ 550 ~ US\$ 635	24 sqm	2 Double Beds

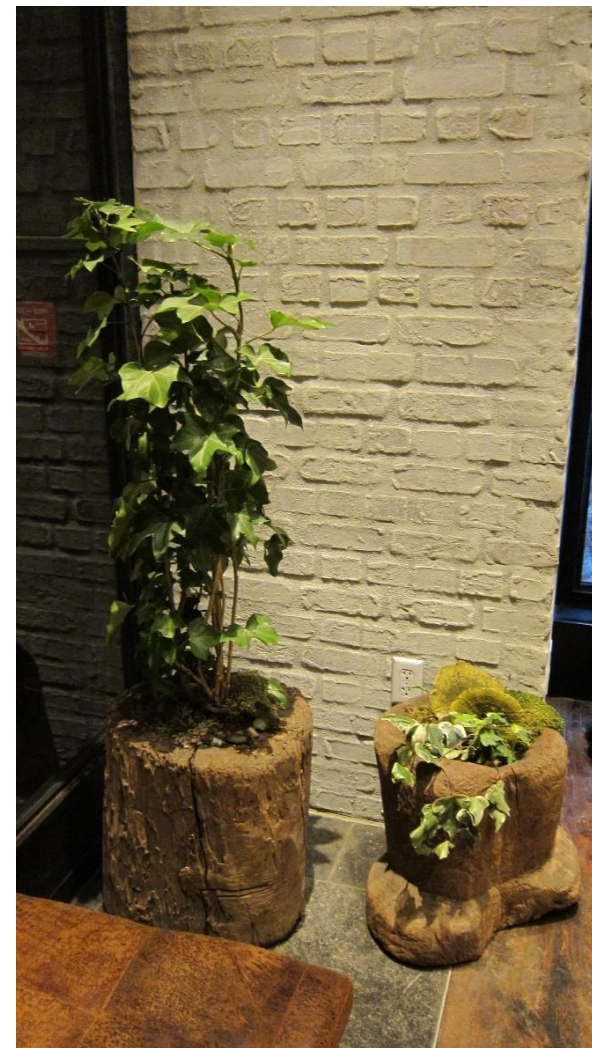


Address : 1414 6th Ave, New York, NY 10019

Hotels are an eco concept by W hotel chain founder Barry Sternlicht. The interior is designed by NYC hipster firm AvroKo to feel like an enchanted forest. Ivy grows up the outside of the building and on the inside 24,000 plants dangle from the lobby ceiling, climb up the walls and surprise you in the shower.



Ceiling Plants :



Plants in Lobby :



Plants in waiting Area :

Designer the pre-existing building architecture, including exposed concrete ceilings and floors, steel columns and beams, and terracotta block masonry walls. Natural materials were brought into the space in their raw form including woods and textiles, celebrating their original markings, veining, knots, and color variation.



Front Desk :

Lobby :



It kept as many of the original details — riveted steel beams, concrete ceilings, a mail slot — as we could, while upcycling sidewalk pavers and even wood from New York State water towers for our wall paneling. It gives these materials new life, because they bring their past life with them.



Bar / Lounge :



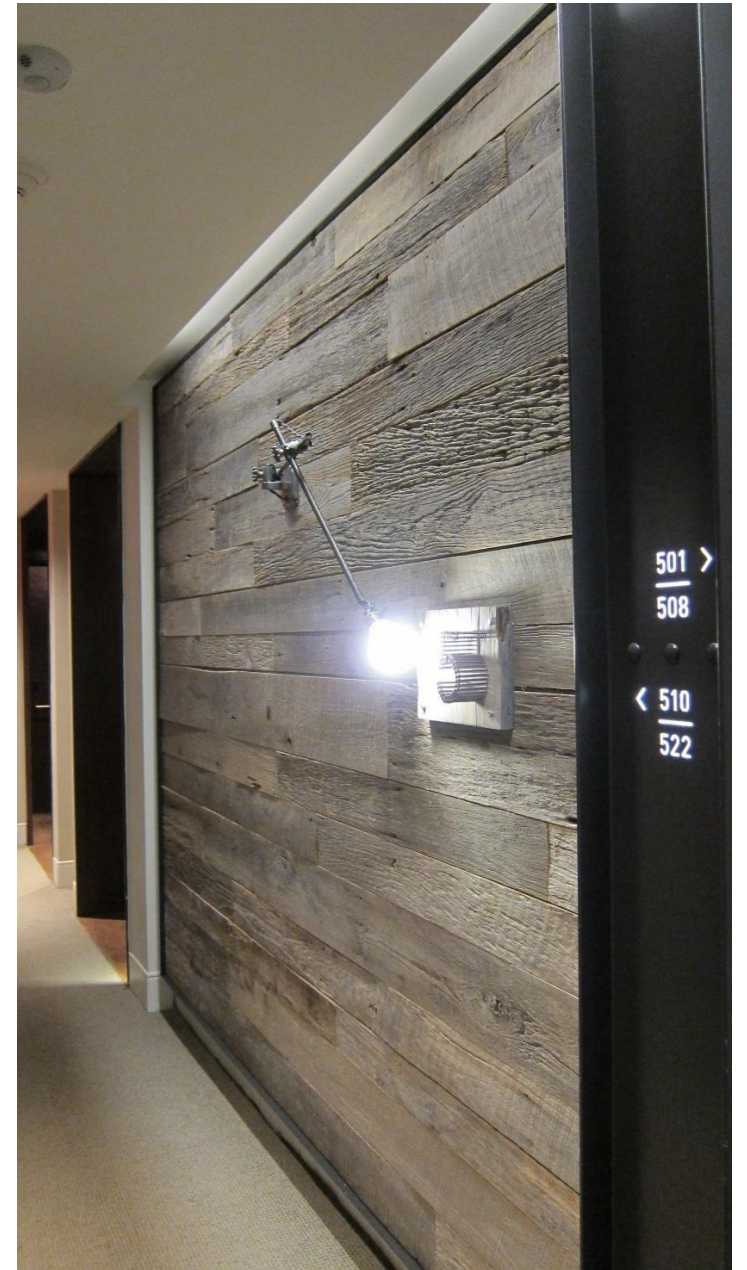
Bar Reception :



Lift Lobby :



Reception Feature Wall :



Floor Corridor :



WoodenFlooring with Room Number :



Dumbo King Room:

Locally-sourced materials were used wherever possible, including a salvaged water tank wood branded with its source used to encapsulate the wall behind the bed, as well as river stones, plant species, linen screens, and leathers all produced upstate.

Dumbo King Room :



Wardrobe :



Mail Number on Writing Desk:

Wardrobe with Environmental protection Material :

Planter Sculture :



Shower room Bronze color Sanitary :



Bathroom :

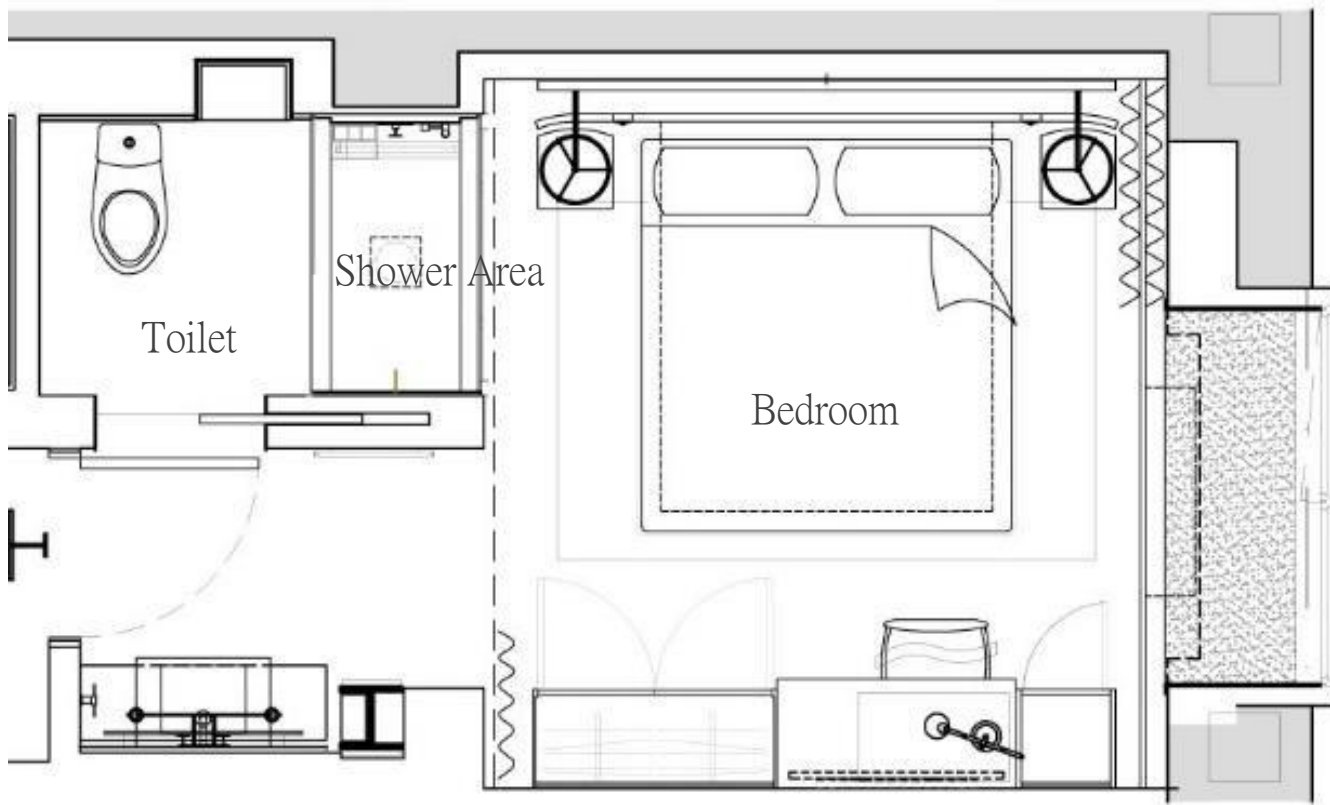


Shower Area with Marble :

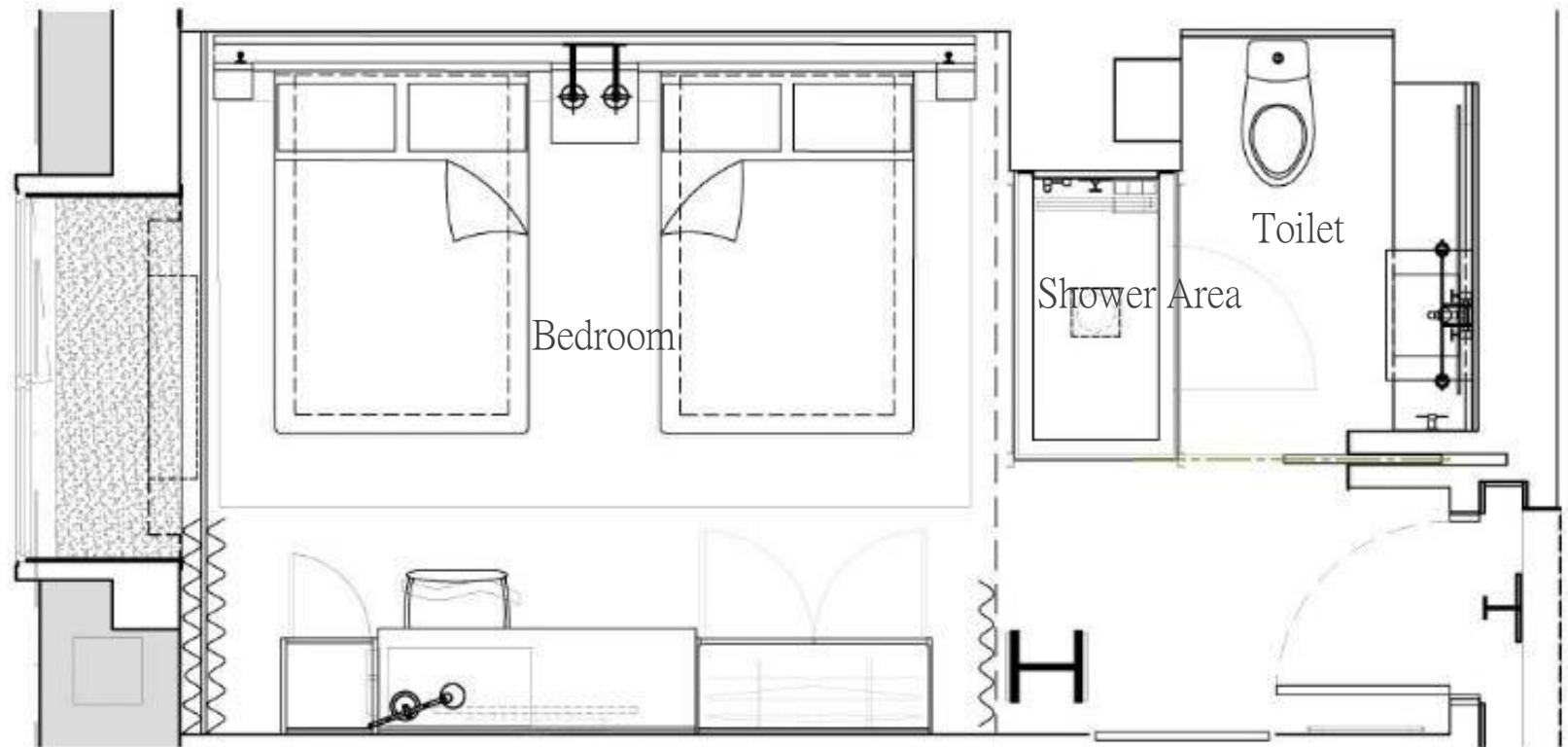


Lavatory :

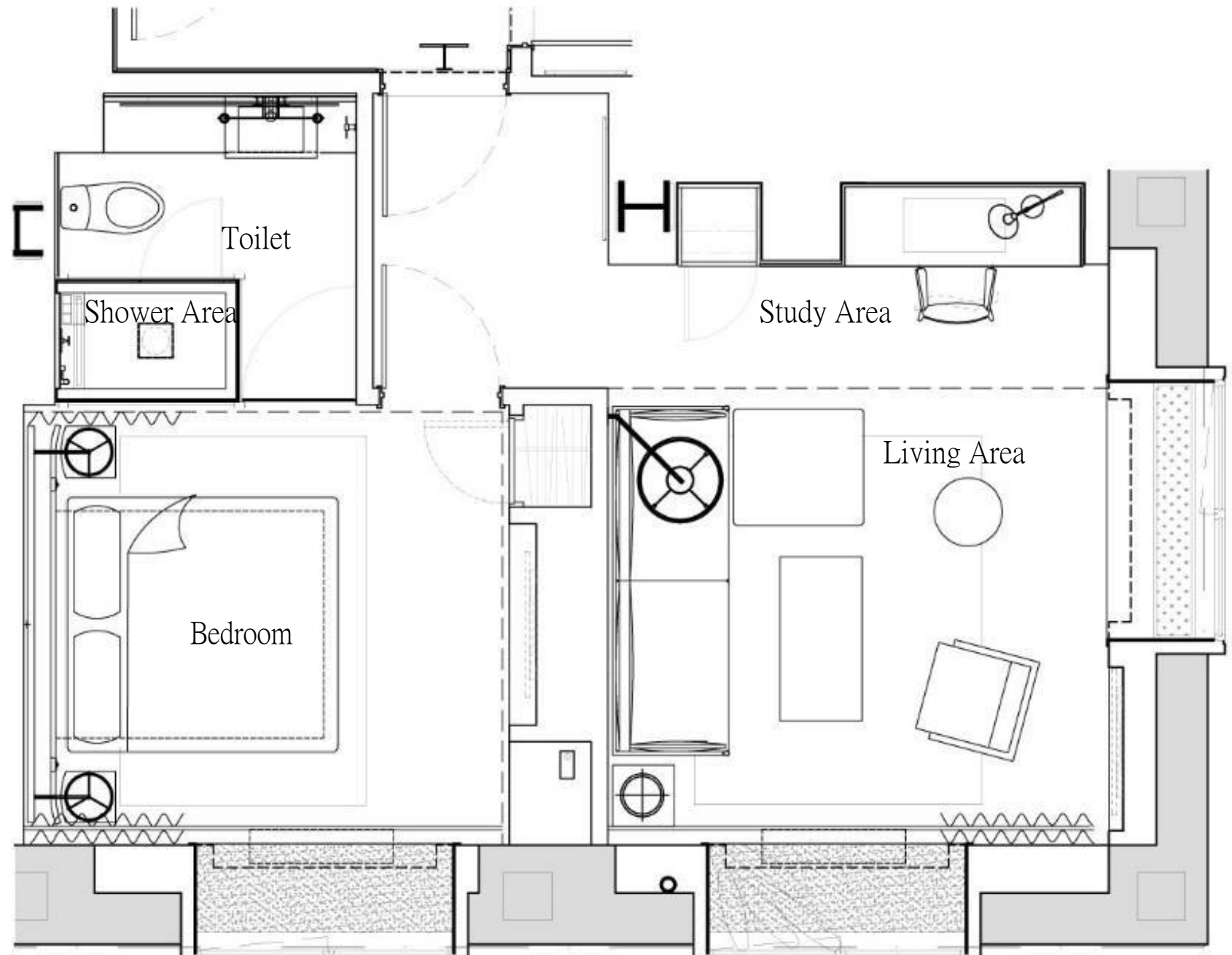
Dumbo King Room :

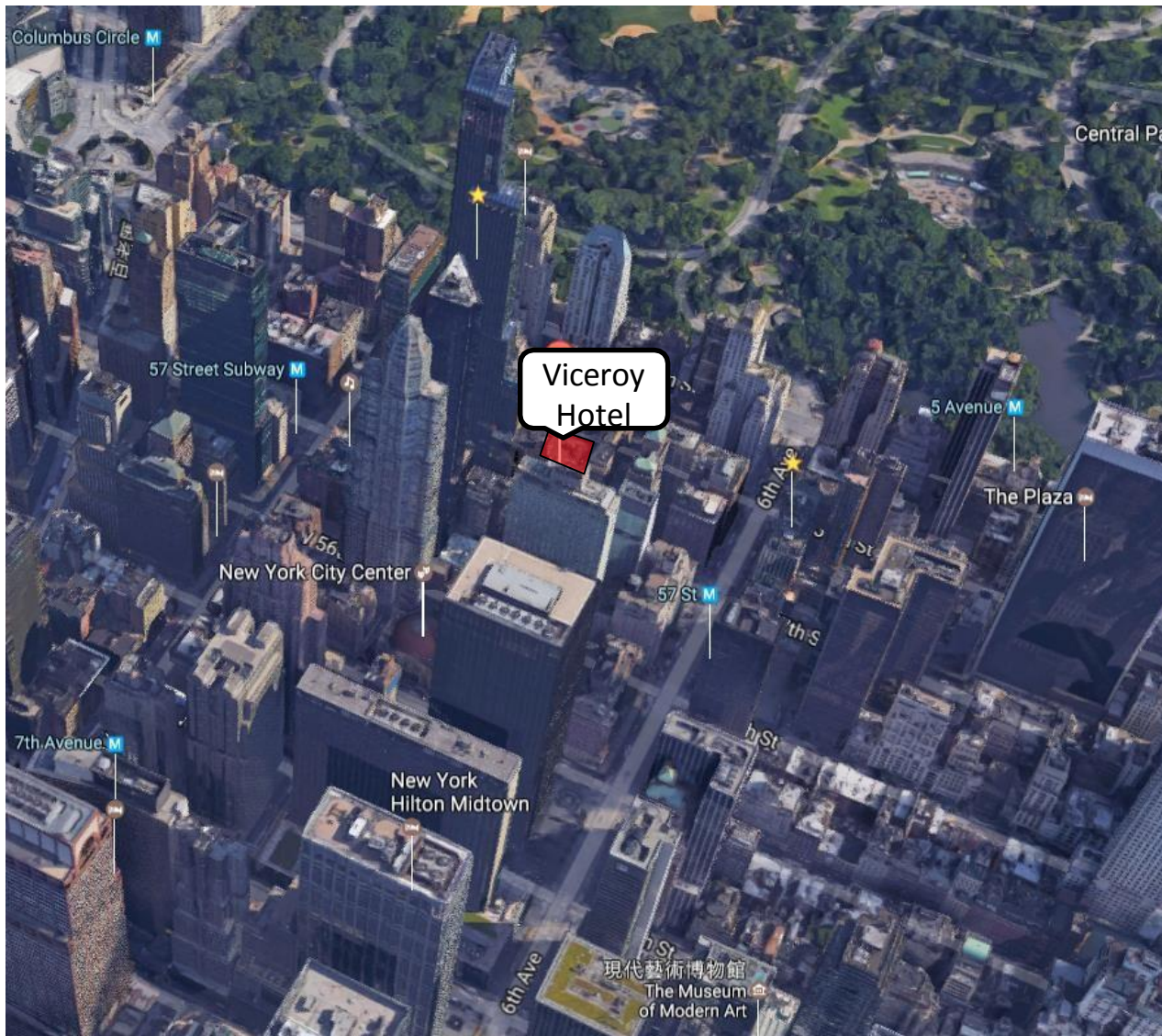


Dumbo 2 Bed Room :



Skyline 1 Bedroom Suite :





Room Numbers : 240

In the Hotel : Front Desk, Lobby, Restaurant, Bar / Lounge, Luggage Storage, Fitness Centre

	Season Price	sqm	Bed Type
Viceroy Standard	US\$ 301	21 sqm	King Bed
Viceroy Superior	US\$ 310	23 sqm	King Bed
Viceroy Deluxe	US\$ 325	23 sqm	King Bed
Viceroy Deluxe Double	US\$ 396	32 sqm	2 Double Beds
Viceroy Park View	US\$ 379	46 sqm	King Bed
Viceroy Terrace	US\$ 362	23 sqm	King Bed
Viceroy Junior Suite	US\$ 397	32 sqm	King Bed
Viceroy Park View Suite	US\$ 503	23 sqm	King Bed
Viceroy Suite 57	US\$ 2275		2 King Beds



11

Viceroy Hotel

Address : 120 West 57th Street, New York, NY 10019

Viceroy Superior :



ROOMS

Viceroy Superior :



Bathroom

King Bed

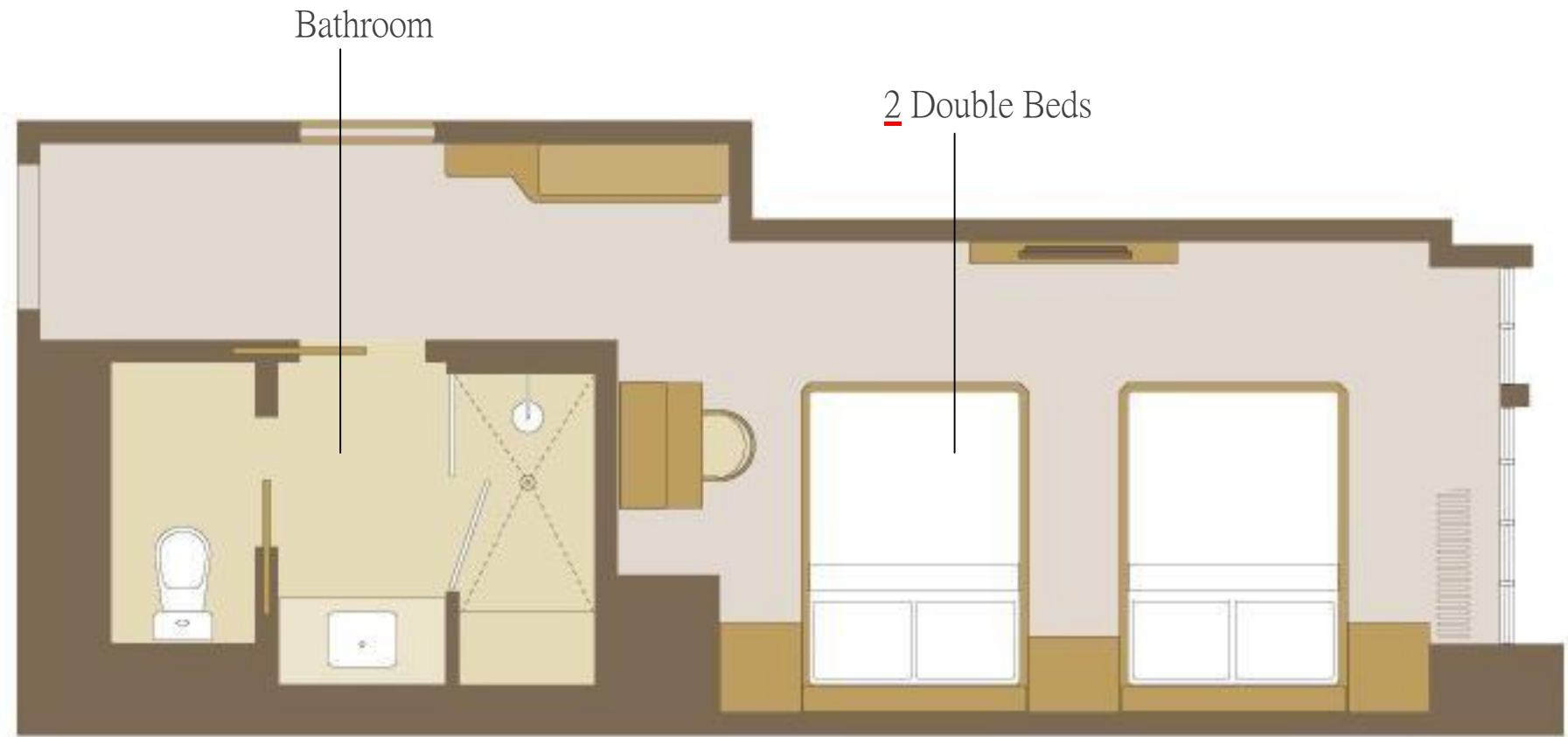


Viceroy Deluxe :

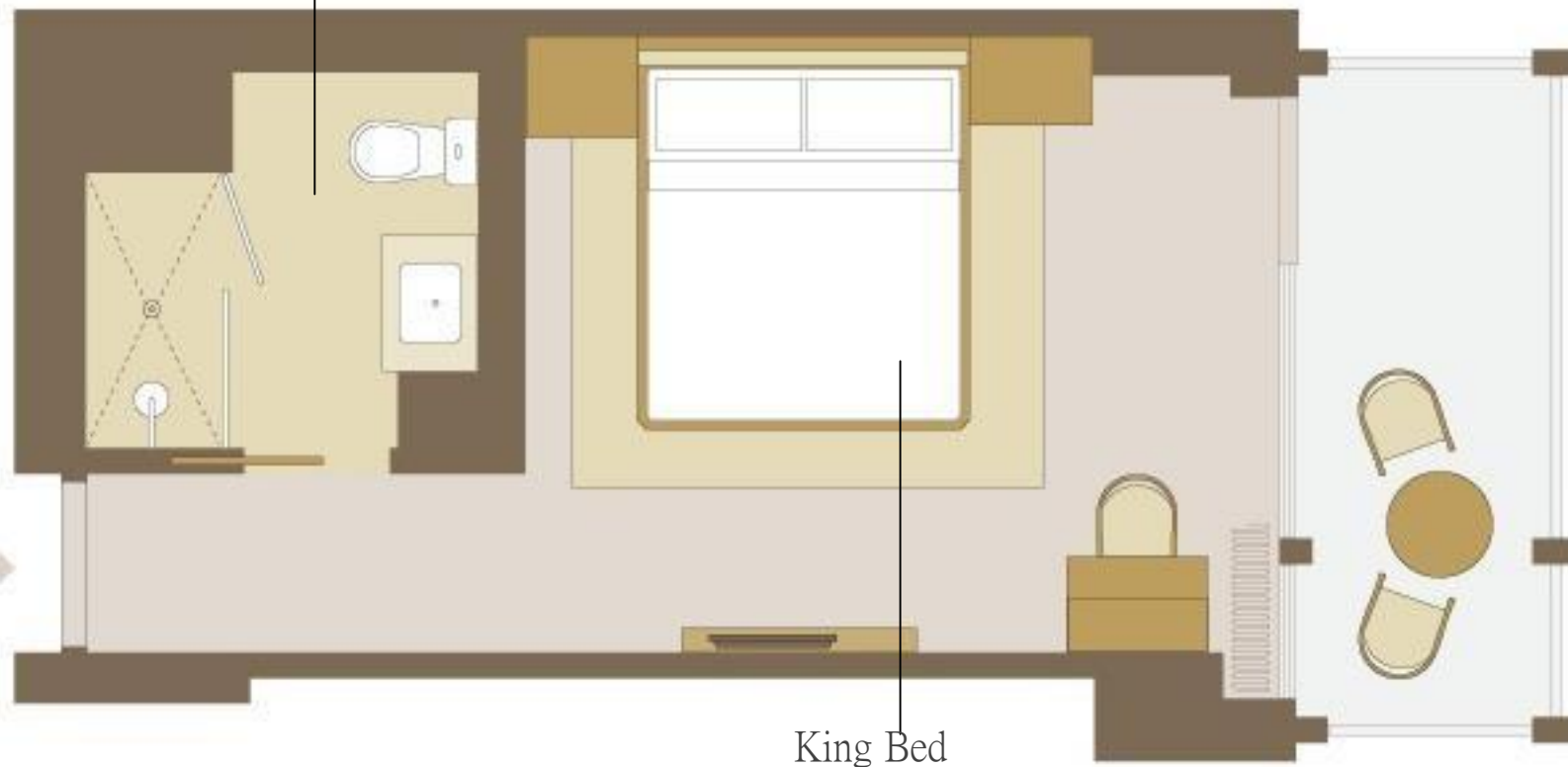
King Bed

ROOMS

Viceroy Deluxe Double :



Bathroom



Viceroy Terrace :

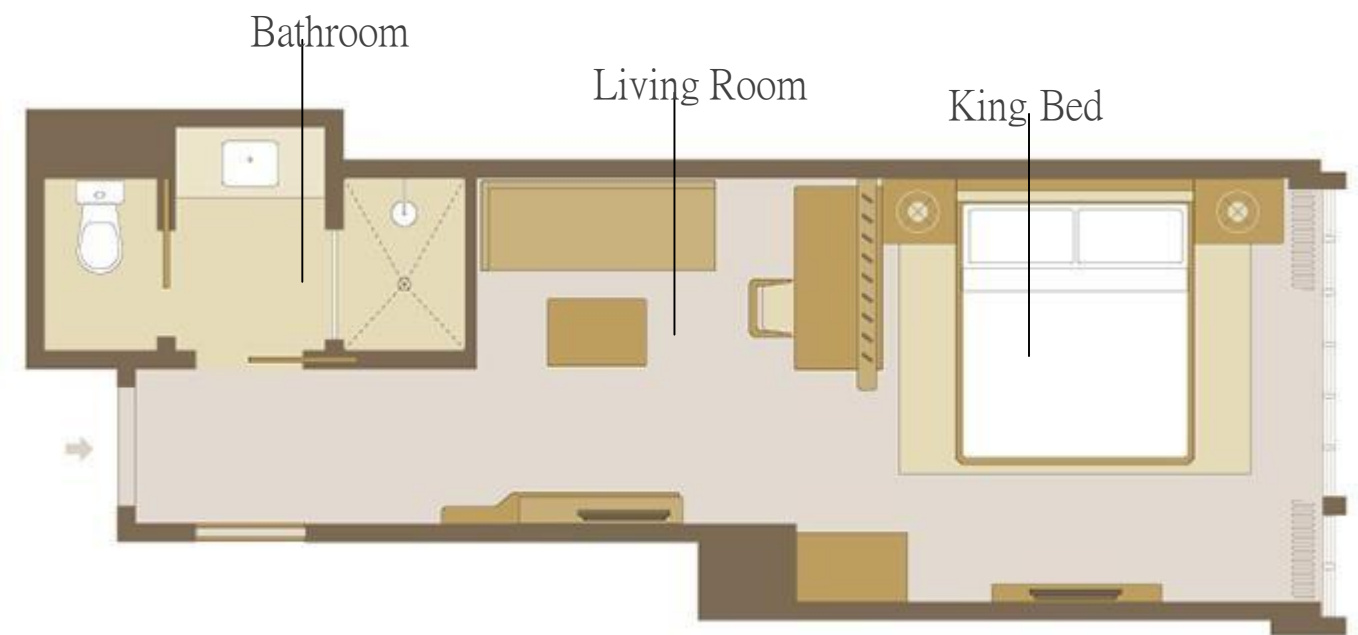
ROOMS

Viceroy Park View :



SUITE

Viceroy Junior Suite :

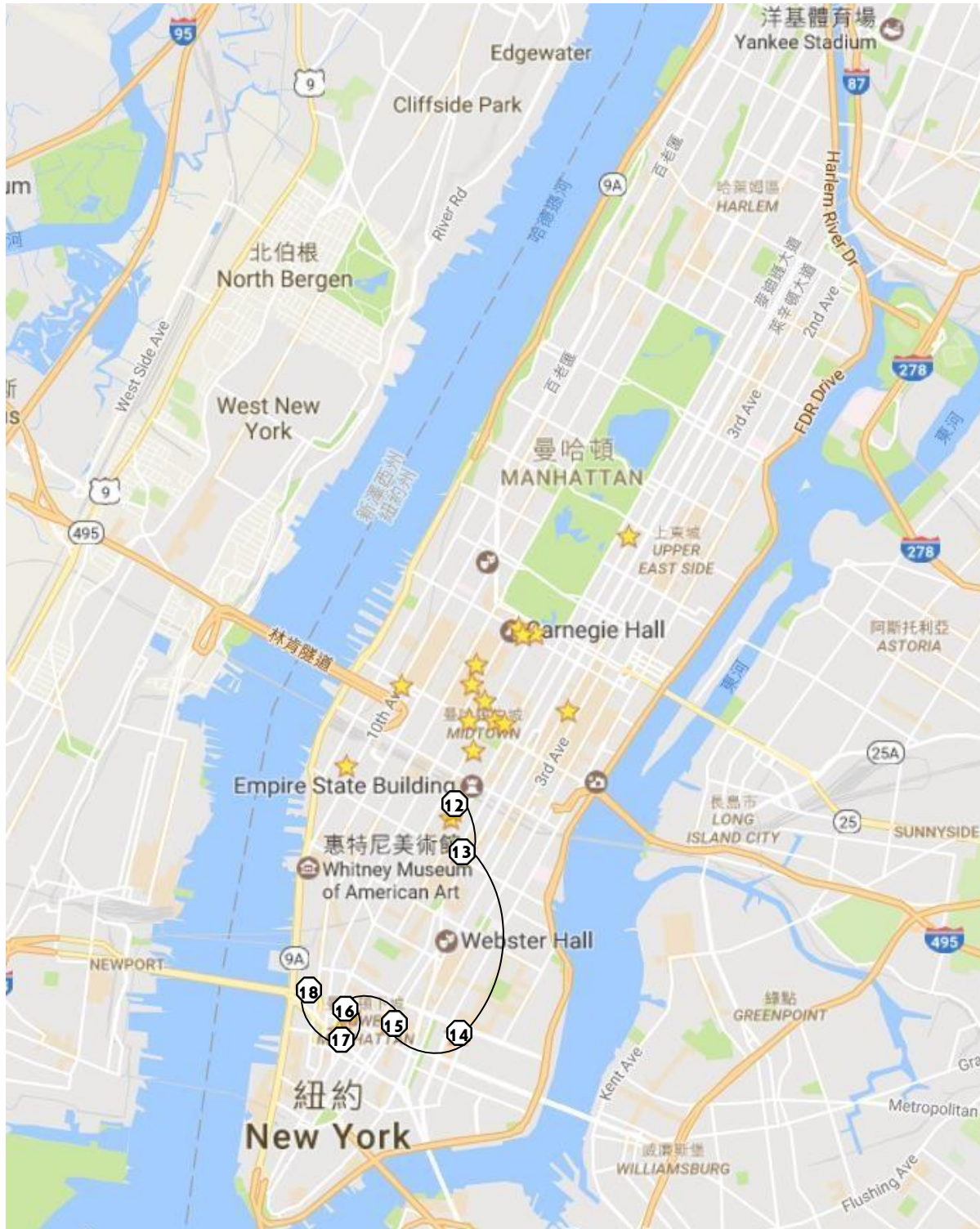


Viceroy Park Suite :

SUITE

Suite 57 :





SOHO

12) Ace Hotel

13) Edition Hotel

14) The Ludlow Hotel

15) Crosby Street Hotel

16) SIXTY Soho

17) Soho Grand Hotel

18) Hugo Hotel

12

Ace Hotel



Room Numbers : 258

In the Hotel : Front Desk/ Shop, Lobby/ Restaurant / meeting space, Bar/ Lounge, Fitness Centre, Luggage Storage

	Season Price	sqm	Bed Type
Bunk Bed	US\$ 189 ~ US\$ 479	13 sqm	1 Bunk Bed
Mini Room	US\$ 209 ~ US\$ 499	13 sqm	1 double bed
Small Room	US\$ 229 ~ US\$ 519	15.8 sqm	1 double bed
Medium Room	US\$ 259 ~ US\$ 569	21 sqm	1 queen bed
Double Room	US\$ 329 ~ US\$ 619	20.7 sqm	2 double beds
Large Room	US\$ 379 ~ US\$ 669	37.2 sqm	1 king bed
Loft Suite	US\$ 1129 ~ US\$ 1119	66 sqm	1 double bed, 1 king bed

Address : 20 W 29th Street, New York, NY 10001





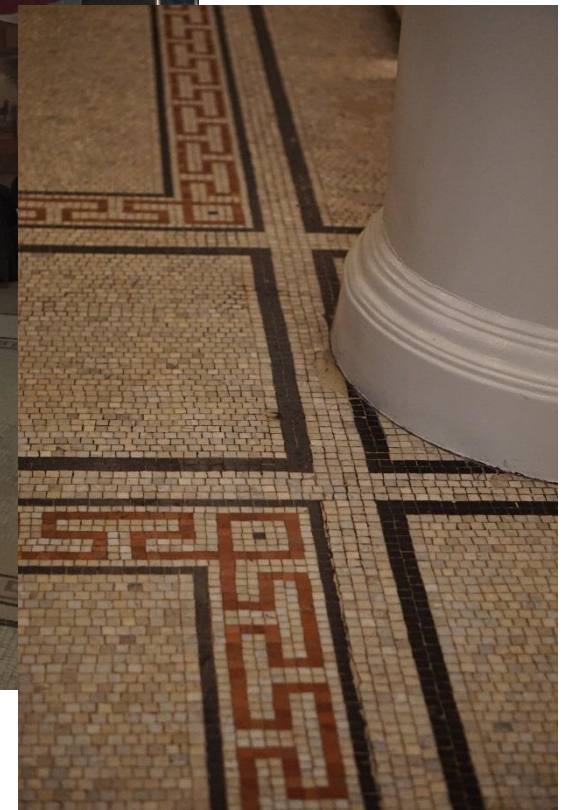
The design of hotel takes its cues from the vibrancy of street life, the honesty of materials and the potential of invention. It is about soul, latent in the old architecture and re-introduced through the new design.

It is Designed by Roman and Williams which idea "a grand dilapidated country house, taken over by a kid throwing a big party and trashing the place while his parents were not around".

Front Desk / Shop :



18-foot laboratory table for Lobby/ Restaurant / meeting space :



Floor Pattern :

Original stained-glass ceilings, plaster moldings, strong moldings, massive columns, airy skylights, and mosaic floors inlaid with a Greek key pattern, custom-designed lighting fixtures, made of hand-blown glass globes and industrial pipes, some of it obscured by layers of unsympathetic renovations, provide the bass notes.

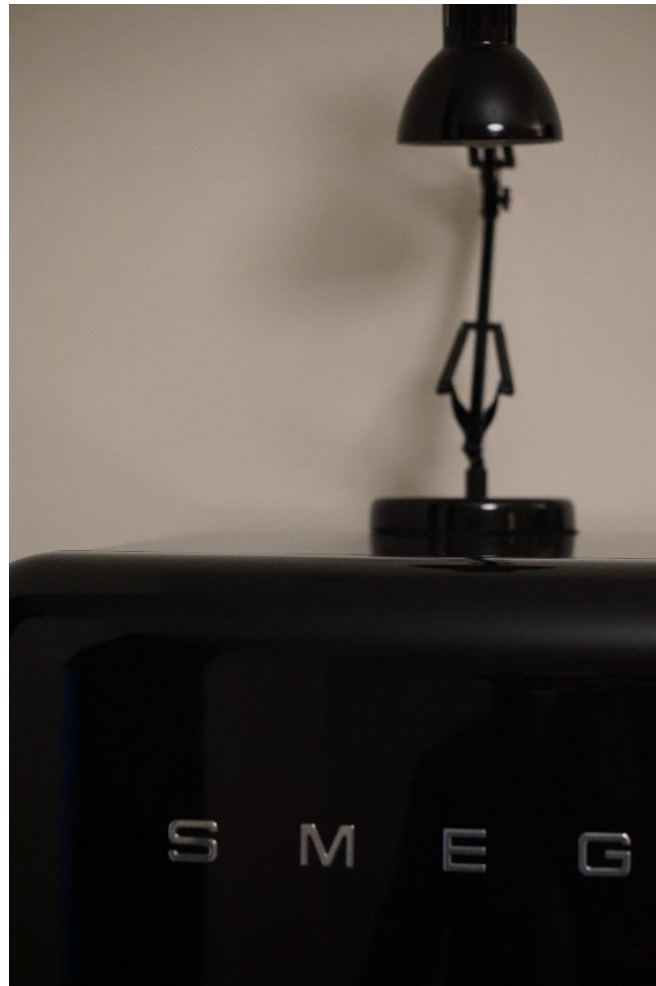


Small Room :



Study Area Behind with Bed :

The rooms are a little more efficient, but still like a funky small apartment. Custom-designed furnishings, such as a custom leather sofa that turns into a bed.



Minibar & hanging clothes area :

An exposed rack made out of bent plumbing pipes and with hanging steel boxes replaces a closet and plays the part of historical reminder, a reference to the neighborhood's industrial history.



Bathroom :

Small Room :

