



**THE HOTEL DESIGN REPORTS  
of NYC**

- Edition Hotel
- The Ludlow Hotel
- Crosby Street Hotel



Room Numbers : 257

In the Hotel : Front Desk, Lobby, Restaurant, Lobby Bar, Dining Room, Fitness Centre, Spa, Wellness Centre, Luggage Storage

	Season Price	sqm	Bed Type
Guest Room	US\$ 436 ~ US\$ 695	20 - 27 sqm	King or Queen Bed
Superior King Room with City View	US\$ 476 ~ US \$ 633	22 - 30 sqm	King Bed
Deluxe King Room with City View	US\$ 516 ~ US \$ 676	28 - 37 sqm	King Bed
Loft with City View	US\$ 696 ~ US \$ 1220	35 - 41 sqm	King Bed
Loft Suite with City View	US\$ 976 ~ US\$ 1070	42 53 sqm	King Bed
Penthouse Suite	US\$ 6000	126 sqm	King Bed

Address : 5 Madison Avenue, , New York City 10010



# The New York Edition

13



Lift Lobby

Lobby :

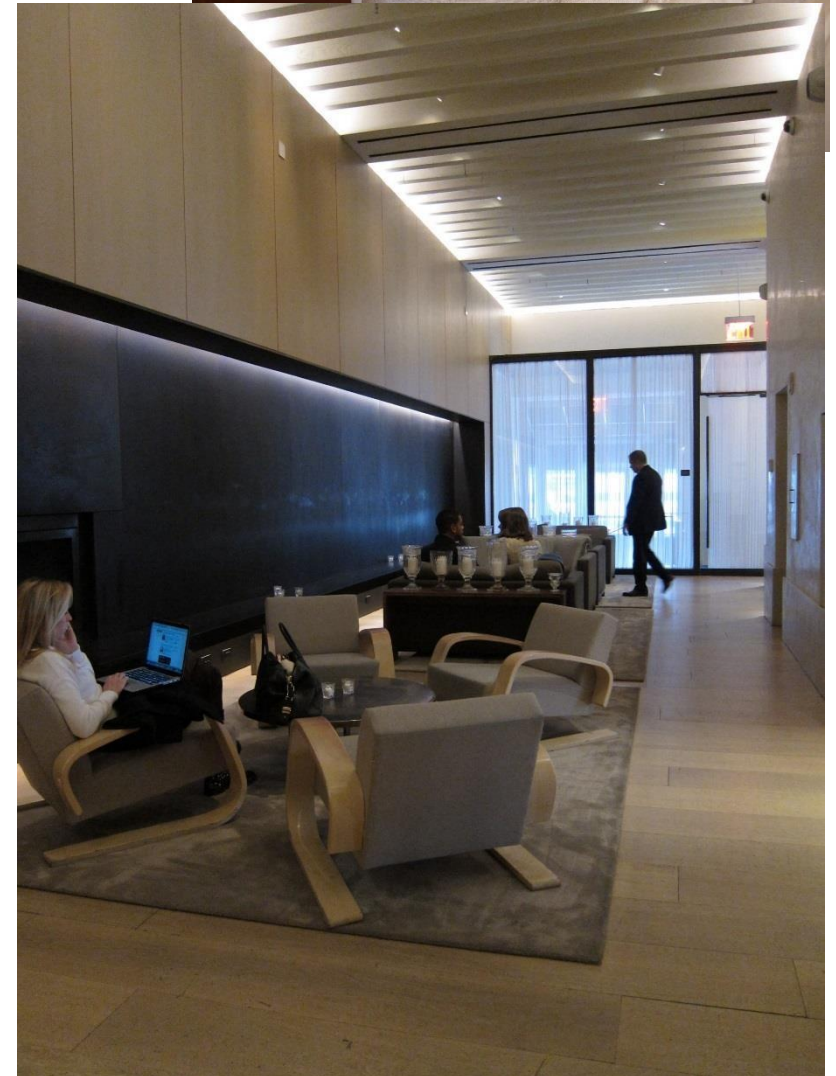
The hotel is in the Gothic-style building, which is also referred to as the Clock Tower, was modeled after the Campanile in Venice, Italy. It has four floors of public areas and amenity spaces. "Rockwellgroup" – a design group developed a design concept for the public areas and guest rooms that complements the Clock Tower's historic interior.

The host desk has an approachable scale, the ceiling in th lobby is 14 ft high.

Front Desk :



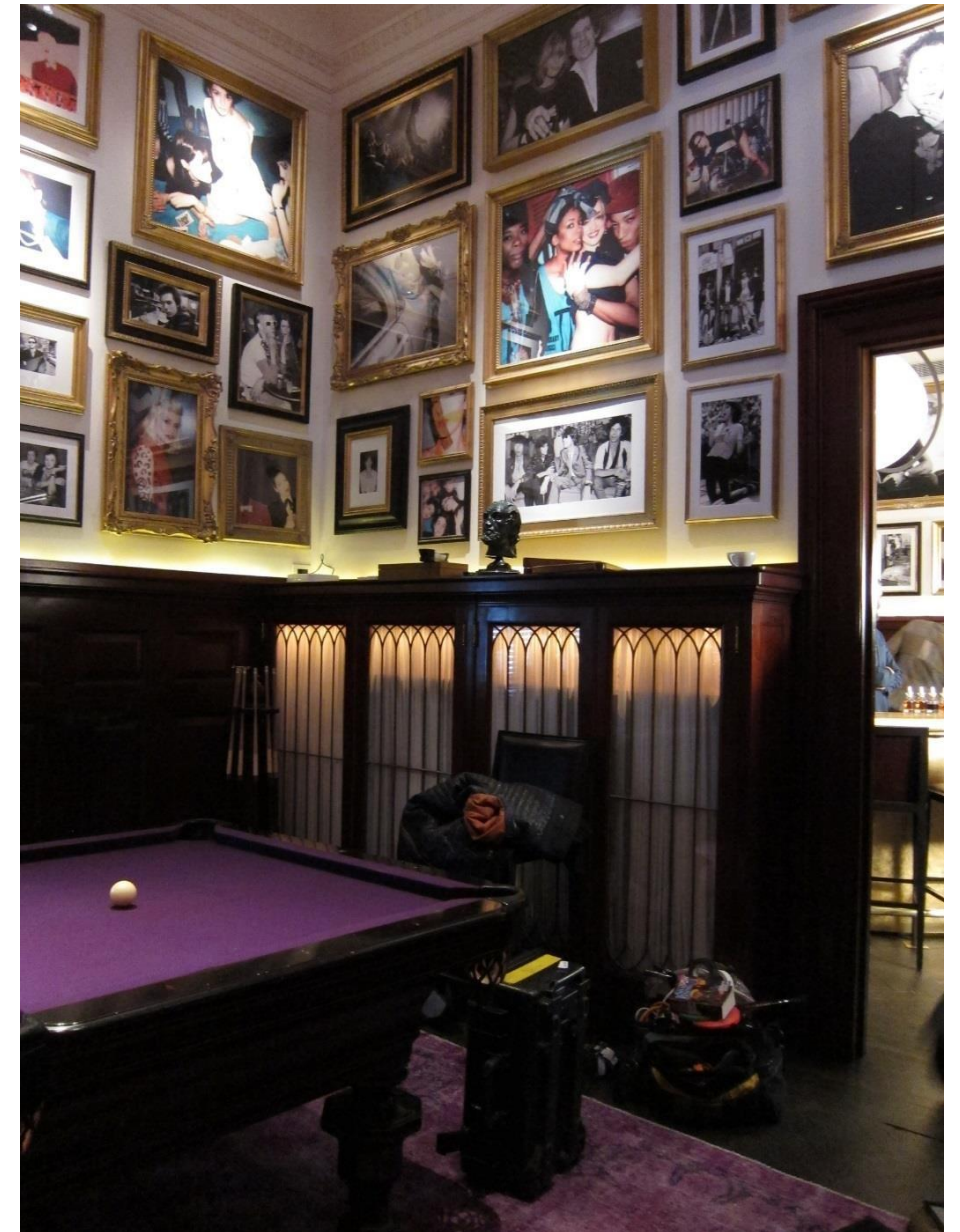
Lobby



A palette of richly textured and natural materials was selected to enhance the juxtaposition of modern and traditional in the building. The lobby's helical steel stair, paneled with light oak, winds up to the second floor.



Restaurant :

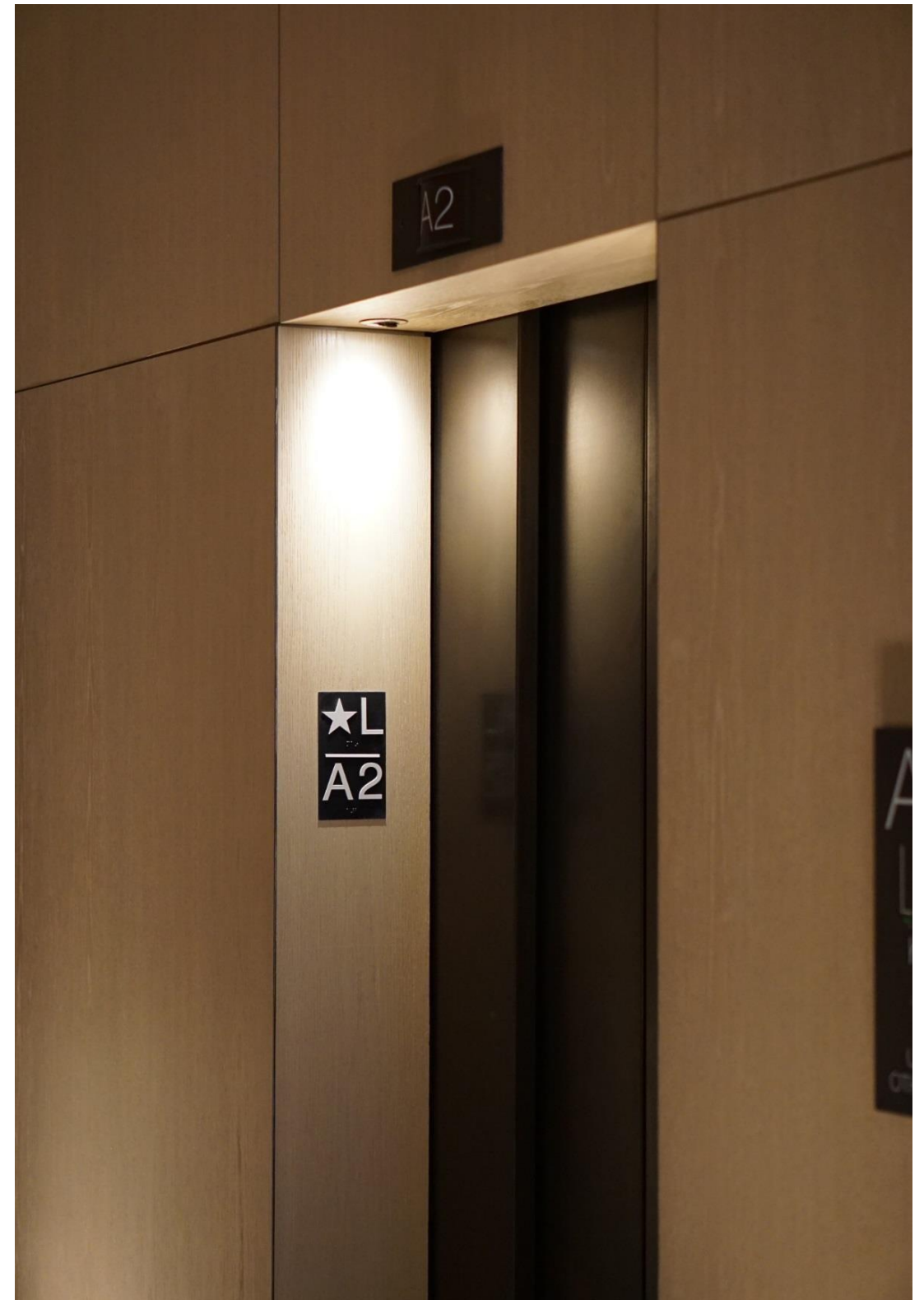


Bar :

Contemporary artwork, dramatic lighting, and lush velvet seating invites vibrant conversations and leisurely meals. This is where MetLife once had its executive offices.



Floor Corridor :



Room Lift Lobby :

Guest Room :



Study Area :

Rooms are chic, with white oak floors, white upholstered furniture and a plush white bed adorned with a faux fur throw. The bright whites are offset by a luxurious, backlit dark walnut headboard and doorframes. Bathrooms are large with a marble trough sink and infinity shower.



Guest Room :

Lavatory :



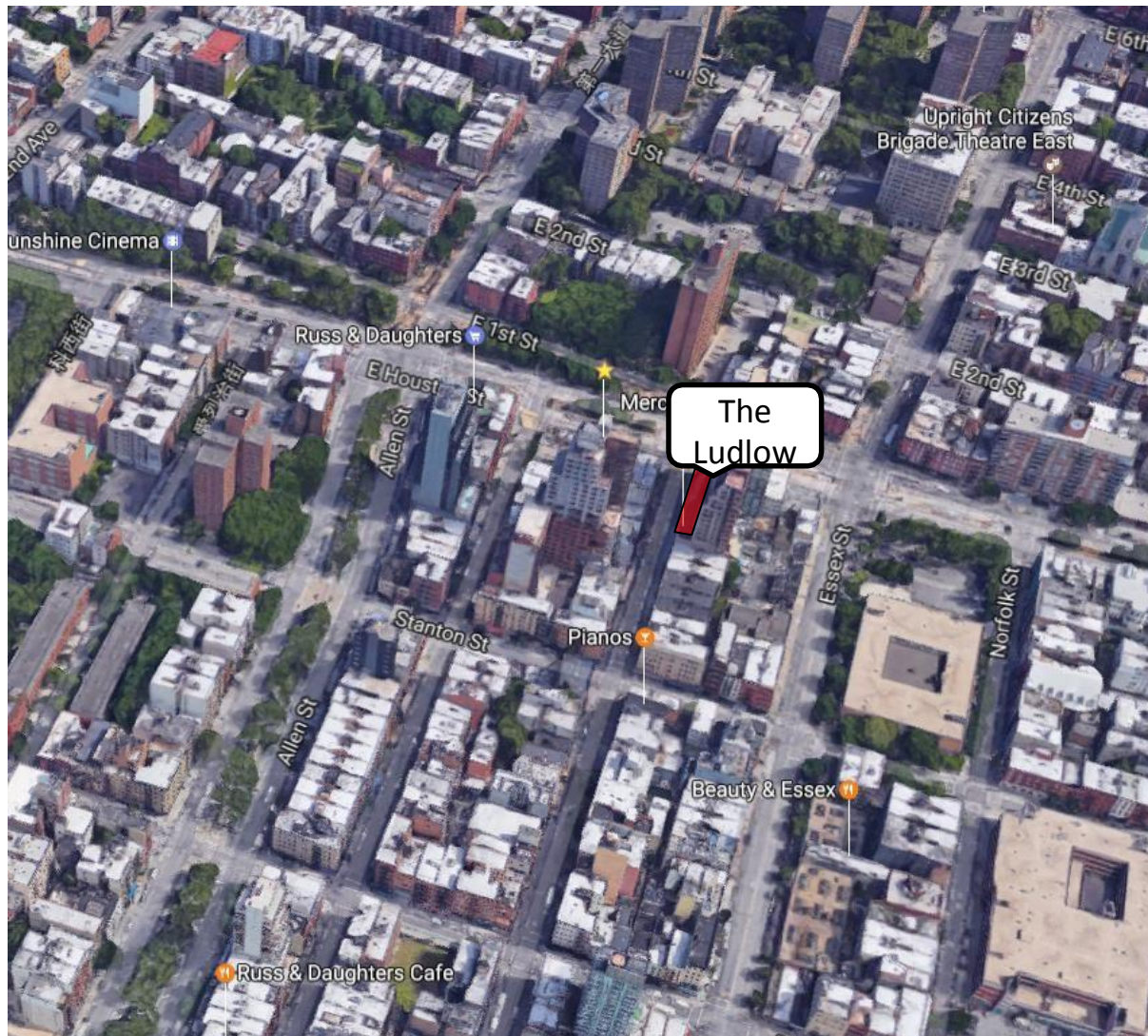
Bathtub :





Room Numbers : 184

In the Hotel : Front Desk, Lobby, Restaurant, Bar / Lounge, Garden, Luggage Storage, Fitness Centre



	Season Price	sqm	Bed Type
Studio Queen Room	US\$ 208 ~ US\$ 375	21 sqm	Queen Bed
Studio King Room	US\$ 234 ~ US\$ 425	27 sqm	King Bed
Studio Queen with Terrace	US\$ 234 ~ US\$ 425	21 sqm + 19 sqm Terrace	Queen Bed
Loft Queen	US\$ 250 ~ US\$ 435	27 sqm	Queen Bed
Loft King	US\$ 310 ~ US\$ 505	30 sqm	King Bed
Skybox Loft	US\$ 310 ~ US\$ 505	30 sqm	Queen Bed
Ludlow Loft	US\$ 310 ~ US\$ 505	38 sqm	King Bed
Ludlow Double	US\$ 336 ~ US\$ 535	41 sqm	1 Queen Bed & 1 King Bed
Ludlow King with Terrace	US\$ 336 ~ US\$ 535	30 sqm + 9 sqm Terrace	King Bed
Ludlow Penthouse	US\$ 1500	140 sqm + 93 sqm Terrace	King Bed



14

# The Ludlow Hotel

Address : 180 Ludlow Street, Lower East Side, New York, NY 10002

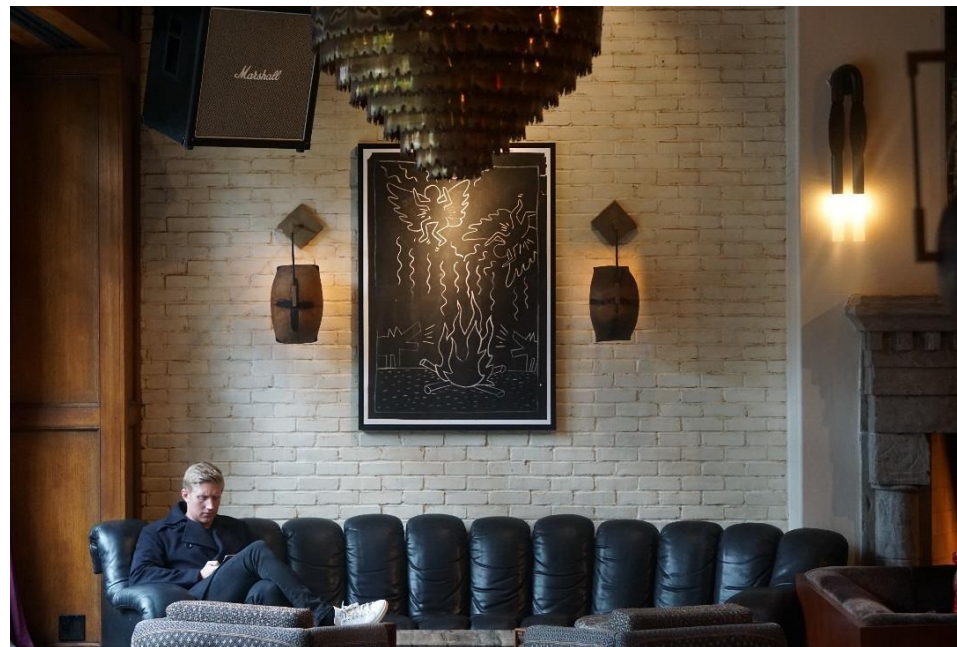
Lobby :



Hotel façade :



A glorious distressed limestone fireplace dominates the lobby lounge. Marble mosaic floors, an eclectic mix of vintage furniture and handpicked finds, and striking art gives the area a private and personal feel, like a New Yorker's downtown living space.



Lobby :



Garden :



Restaurant :



The lobby garden is flooded with plenty of natural light. Exotic hanging fixtures soften the industrial vibe of the building here. The Terrace suites come with a sizeable outdoor space where one can enjoy breakfast and city views.

Studio Queen Room :



Side Table :



Rooms feature oversized windows, plush furnishings with Indo- Portuguese style beds, artisan- crafted Moroccan pendant lamps, dark-stained hardwood floors with handmade silk rugs, and white ceilings with exposed wooden beams.



Lavatory :



Bathroom :

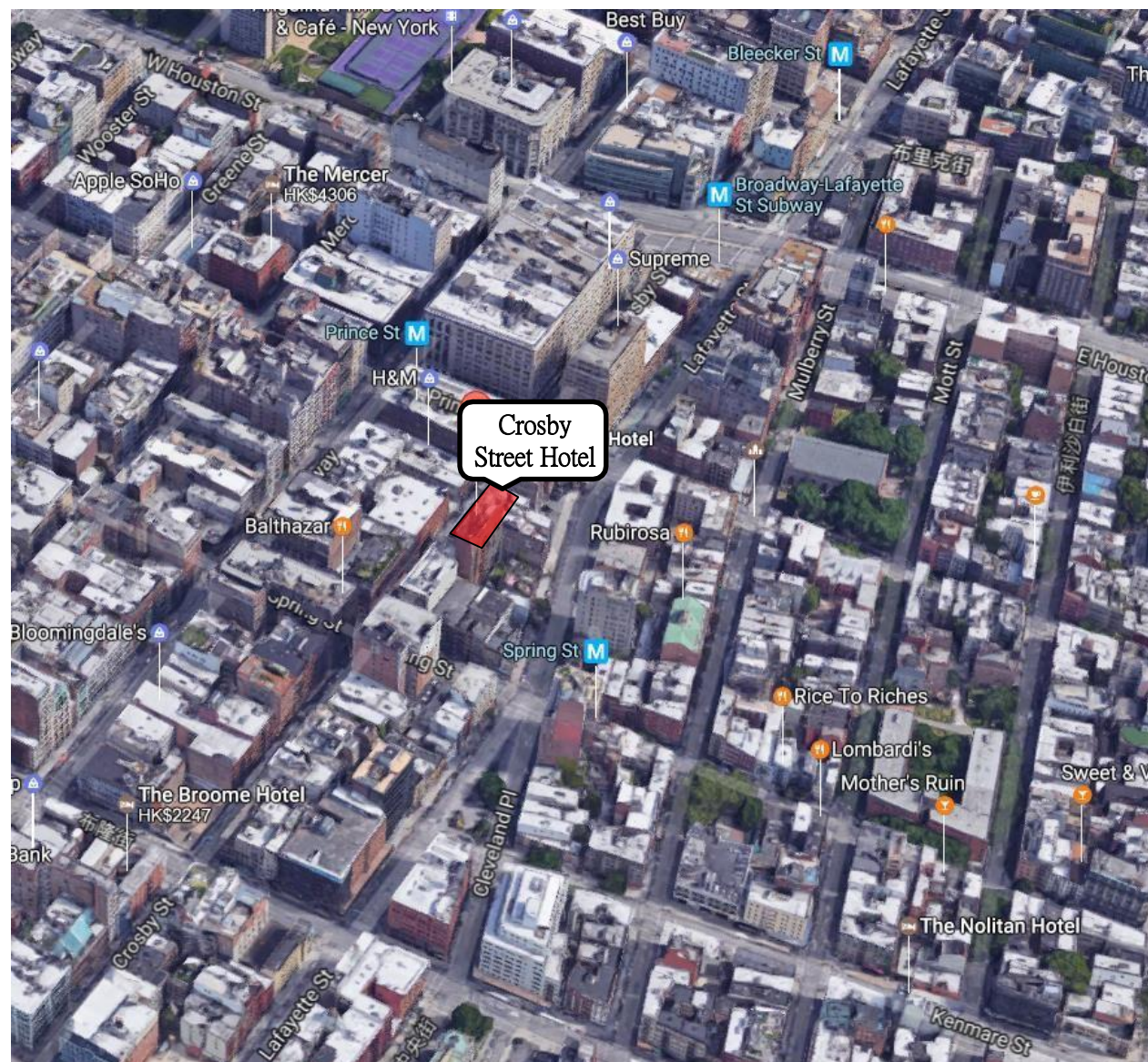
All bathrooms boast black-and-white tile work, marble mosaic floors, and brass fixtures, rainshower heads, while many feature soaking tubs with great views.





# 15

# Crosby Street Hotel



Room Numbers : 86

In the Hotel : Front Desk, Lobby, Restaurant, Bar, Fitness Centre, A Private Leafy Garden, Guest Drawing Room, Three Private Event / Meeting Rooms, 99 Seat Screening Room / Film Club, Luggage Storage

	Season Price	sqm	Bed Type
Superior King Room	US\$ 695	32 sqm	1 King Bed
Luxury King Room	US\$ 775	33 sqm	1 King Bed
Deluxe King Room	US\$ 825	34 sqm	1 King Bed
Deluxe King Room (Top Floor)	US\$ 895	34 sqm	1 King Bed
Luxury Junior Suite	US\$ 1025	37 sqm	1 King Bed
Deluxe Junior Suite	US\$ 1250	65 sqm	1 King Bed & 1 Sofa Bed
Luxury One-Bedroom King Suite	US\$ 2750	110 sqm	1 King Bed
Crosby Suit	US\$ 4750		

Address : 79 Crosby Street, New York City 10012

Lobby :



Outdoor animal Sculture :



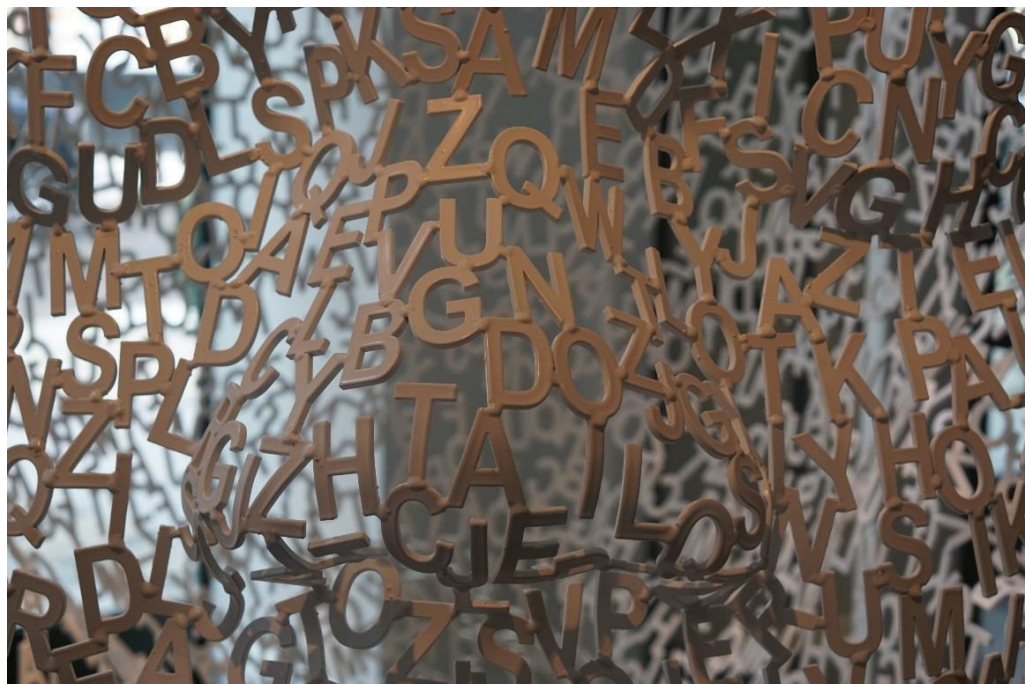
The hotel is one of the most environmentally responsible hotels in the entire U.S., hence their Gold certification by the U.S. Green Building Council. The interior designer Kit Kemp with original English style, the Crosby Street Hotel achieves an American flair without abandoning her signature design concept with local designers and artisans.



Front Desk :

lobby is dominated by a stunning 10 foot high centrepiece sculpture of a human head by Spanish artist Jaume Plensa. The hotel also features other impressive art works such as an iconic Anselm Kiefer painting, Jack Milroy's mixed media pieces and Justine Smith's quirky dog sculptures.

Sculture Detail :



Lobby :

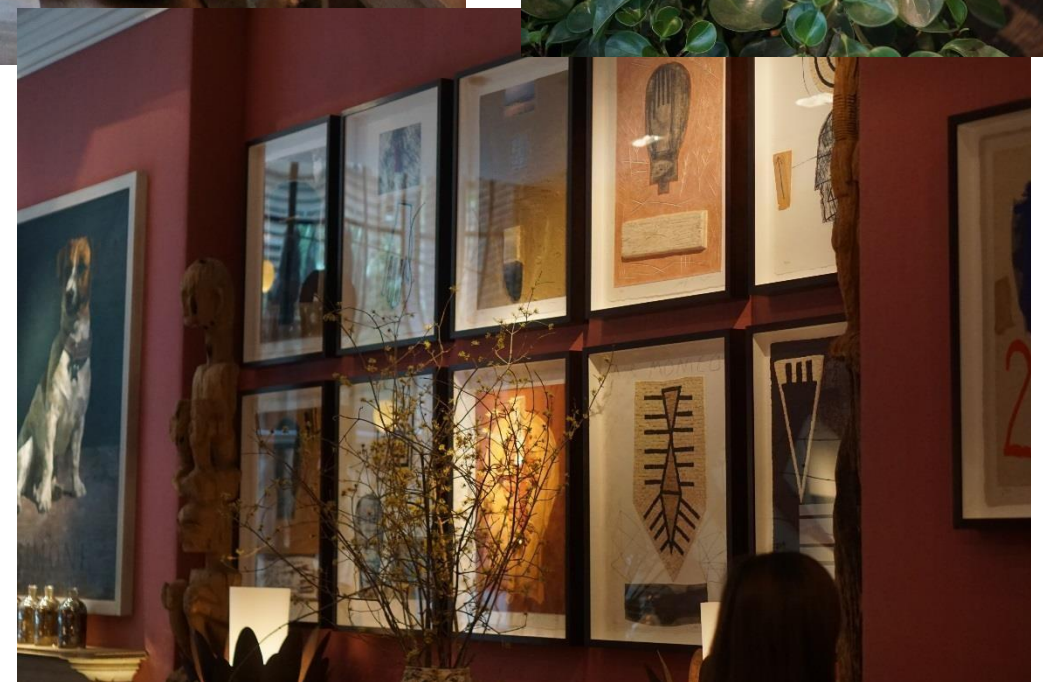




Guest drawing room with original art, French sandstone fireplace, deep comfortable sofas and honour bar. A leafy sculpture garden at outdoor which is a private area.



Guest Drawing Room :



Lounge Chair Frabic Detail : Drawing on Wall :

Private Event / Meeting Rooms :



Private Event / Meeting Rooms :



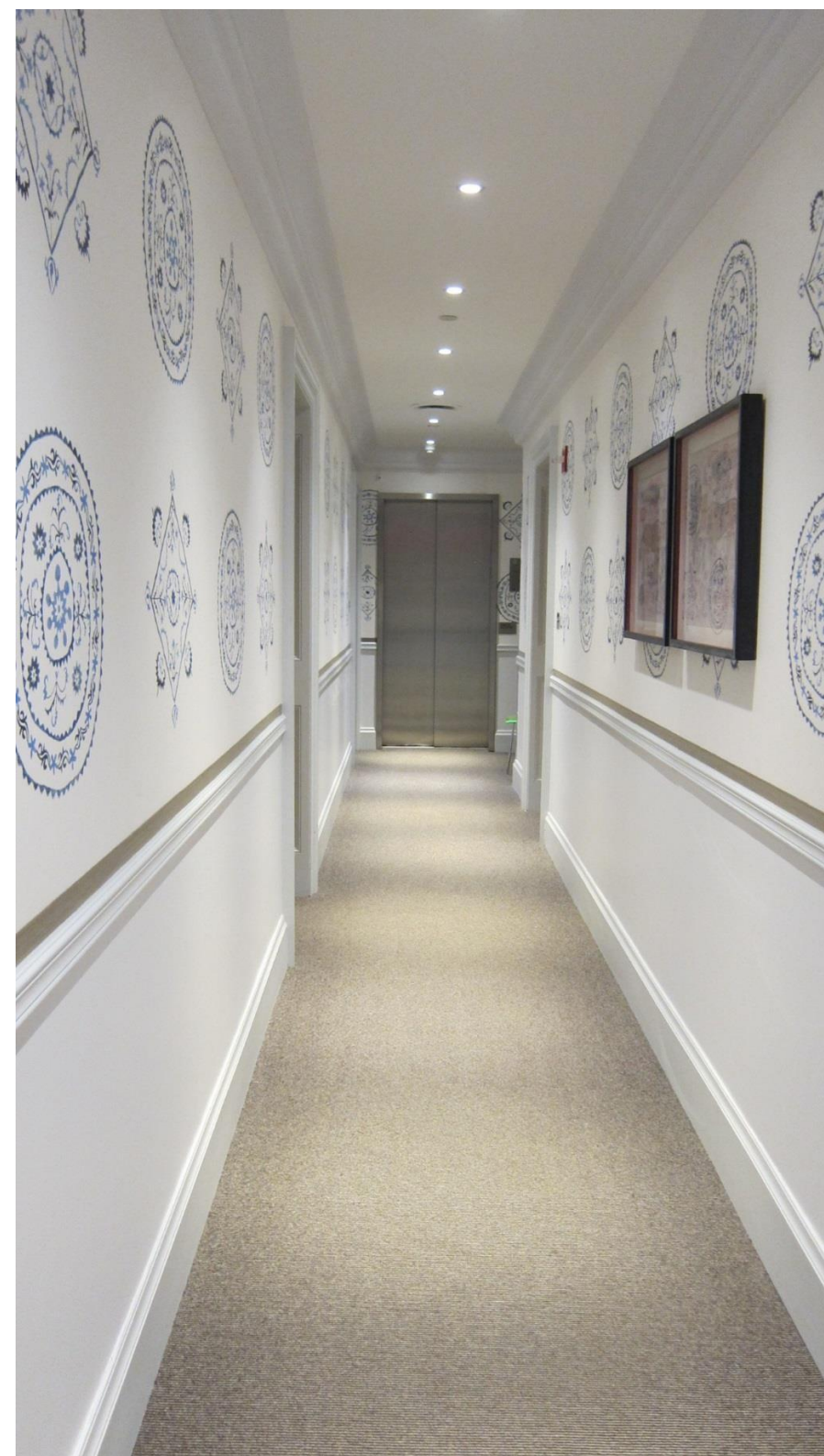
99 Seat Screening Room / Film Club :



Mini Library :



Room Lift Lobby :



Floor Corridor :



Rooms are spacious and light with high ceilings and full length windows. They have a sitting space and the bathroom is used marble and granite in large walk-in showers. Some have two basins.

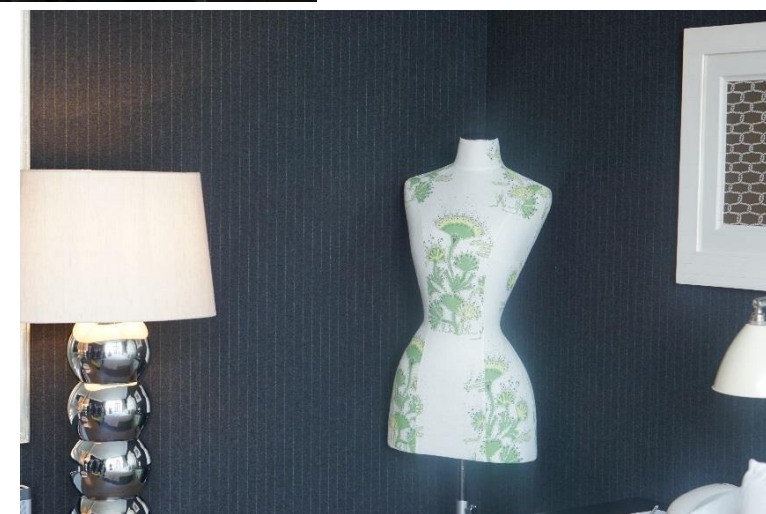
Deluxe King Room :



Lounge Chair :



Marble Shelves in Bathroom :



Dume beside Writing Desk :