

The background image shows a bright, modern hotel dining room. Large windows on the right side offer a view of the outdoors. The interior is decorated with several tall, green indoor plants. The walls feature vertical wood slats and four large, colorful abstract artworks. In the foreground, there are tables and chairs, some of which are partially obscured by a semi-transparent text box. A wooden railing is visible in the lower right corner.

THE HOTEL DESIGN REPORTS of NYC

- Americano Hotel
- Yotel
- The Mark Hotel



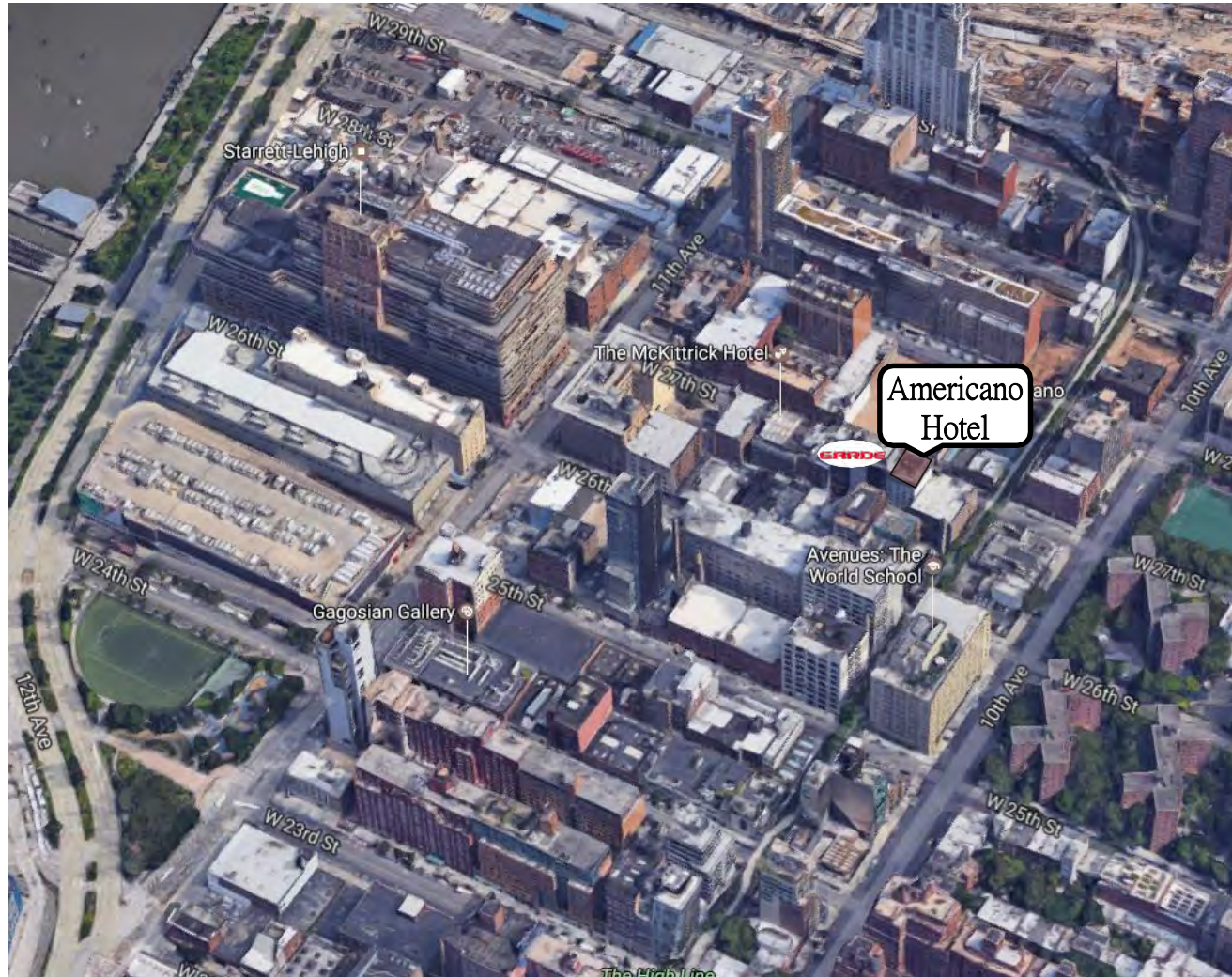
BESIDE HUDSON RIVER

19)Americano Hotel

20) Yotel

CENTRAL PARK

21) The Mark Hotel



Room Numbers : 56

In the Hotel : Front Desk, Lobby, Lobby Café, Restaurant, Basement Bar, Rooftop Restaurant, Rooftop bar, Luggage Storage

| | Season Price | sqm | Bed Type |
|---------------------|-------------------------|--------|-----------|
| Queen Room | US\$ 325 ~ US\$ 435 | 20 sqm | Queen Bed |
| Superior Queen Room | US\$ 345 ~ US \$ 455 | 20 sqm | Queen Bed |
| King Room | US\$ 365 ~ US \$ 475 | 23 sqm | King Bed |
| Superior King Room | US\$ 385 ~ US \$ 495 | 23 sqm | King Bed |
| Studio Suite | US\$ 585 ~ US\$ 695 | 40 sqm | King Bed |

Address : 518 West 27th Street, Chelsea, New York, NY 10001



19 Americana Hotel



Lobby :

Front Desk :

Paris-based interior designer Arnaud Montigny had a warm approach to the interiors, one influenced by his work in Tokyo. soft urban style: black leather sofas, velvet khaki armchairs, lighting points in golden metal and concrete dividers.





Bar Counter :



Restaurant :

The restaurant serves up French fare with Latin flair in West Chelsea's cutting-edge dining room with an outdoor garden patio.

Rooftop Bar :

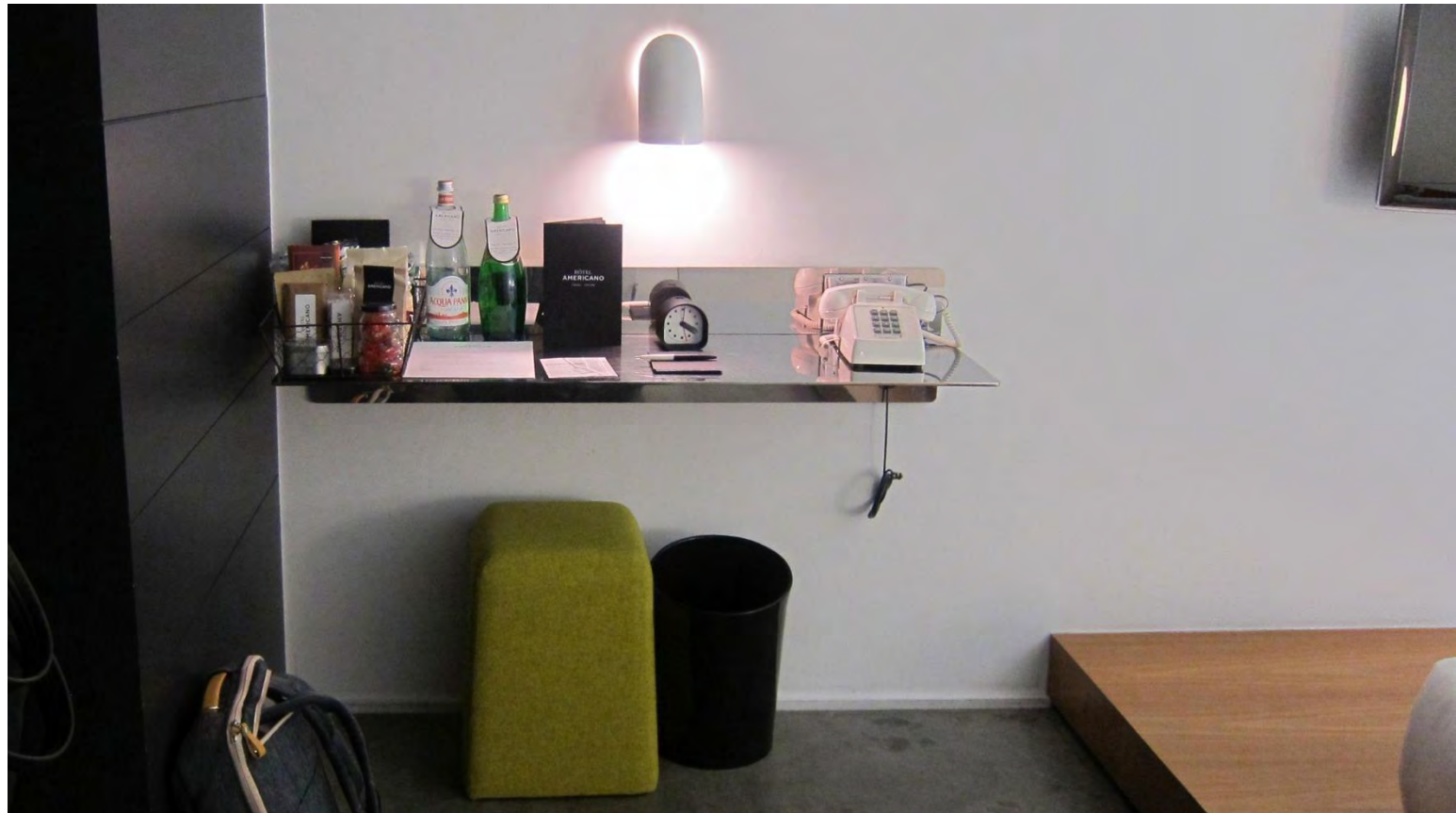


Outdoor Furniture :

King Room :



Guest rooms feature Kengo Kuma-style, almost-on-the-ground wooden platform beds, warm lighting, black bean bag chairs and minimal elements. Denim bathrobes by Loden Dager hang in the bathroom and there are iPads loaded with music and the hotel's own city guide.



Key Check-in Room :

Mini Bar / Studytable :

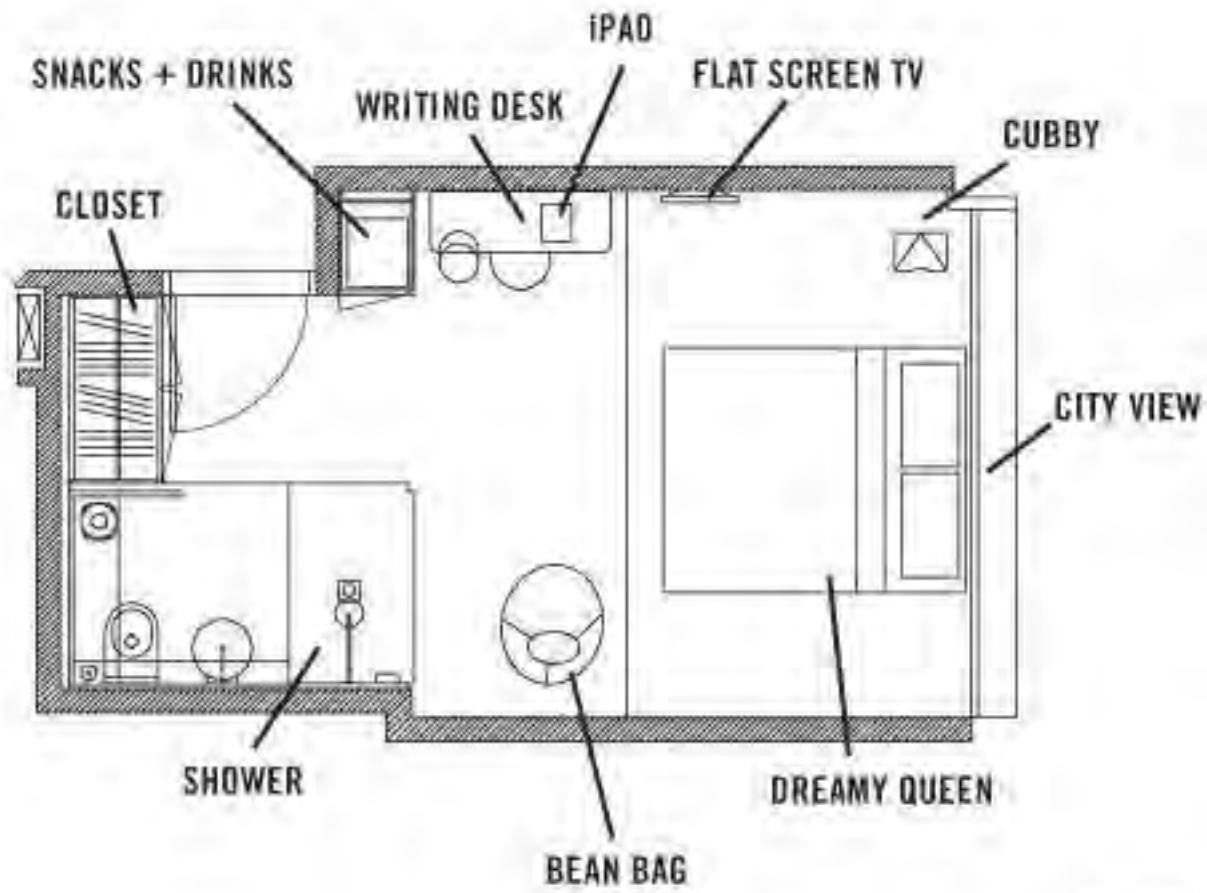
Glass Shelves :



Bathroom :

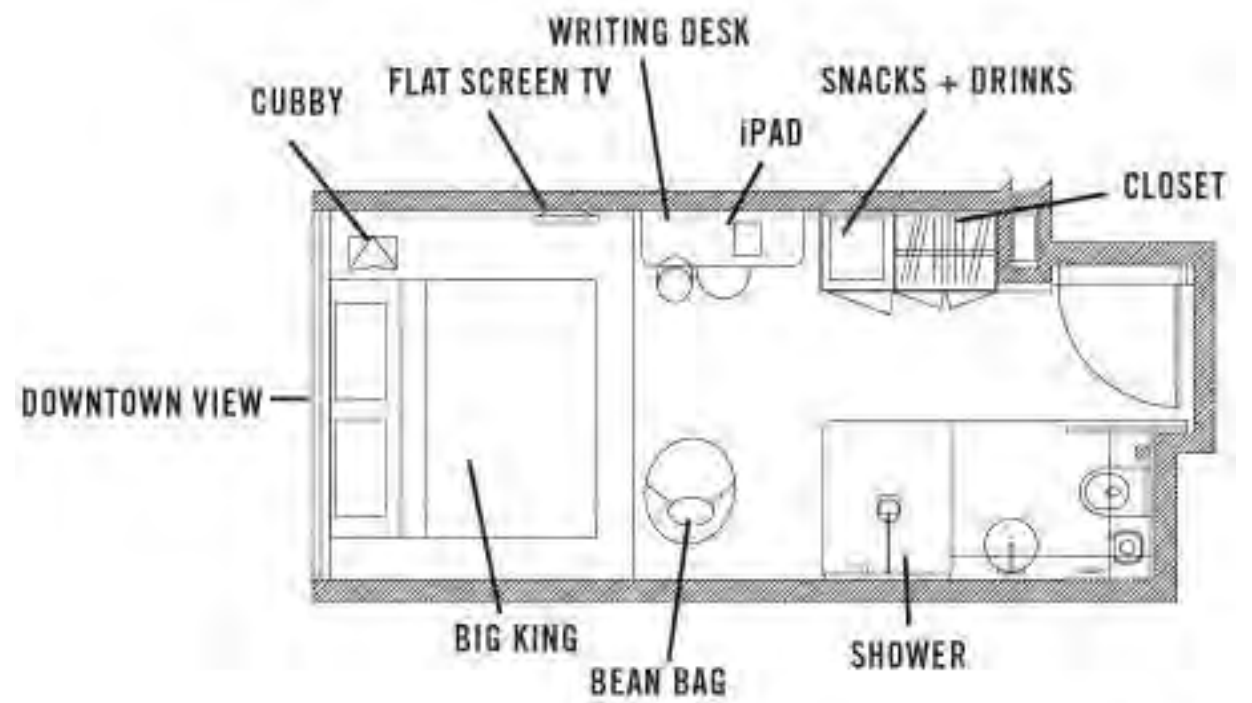


Superior Queen Room :



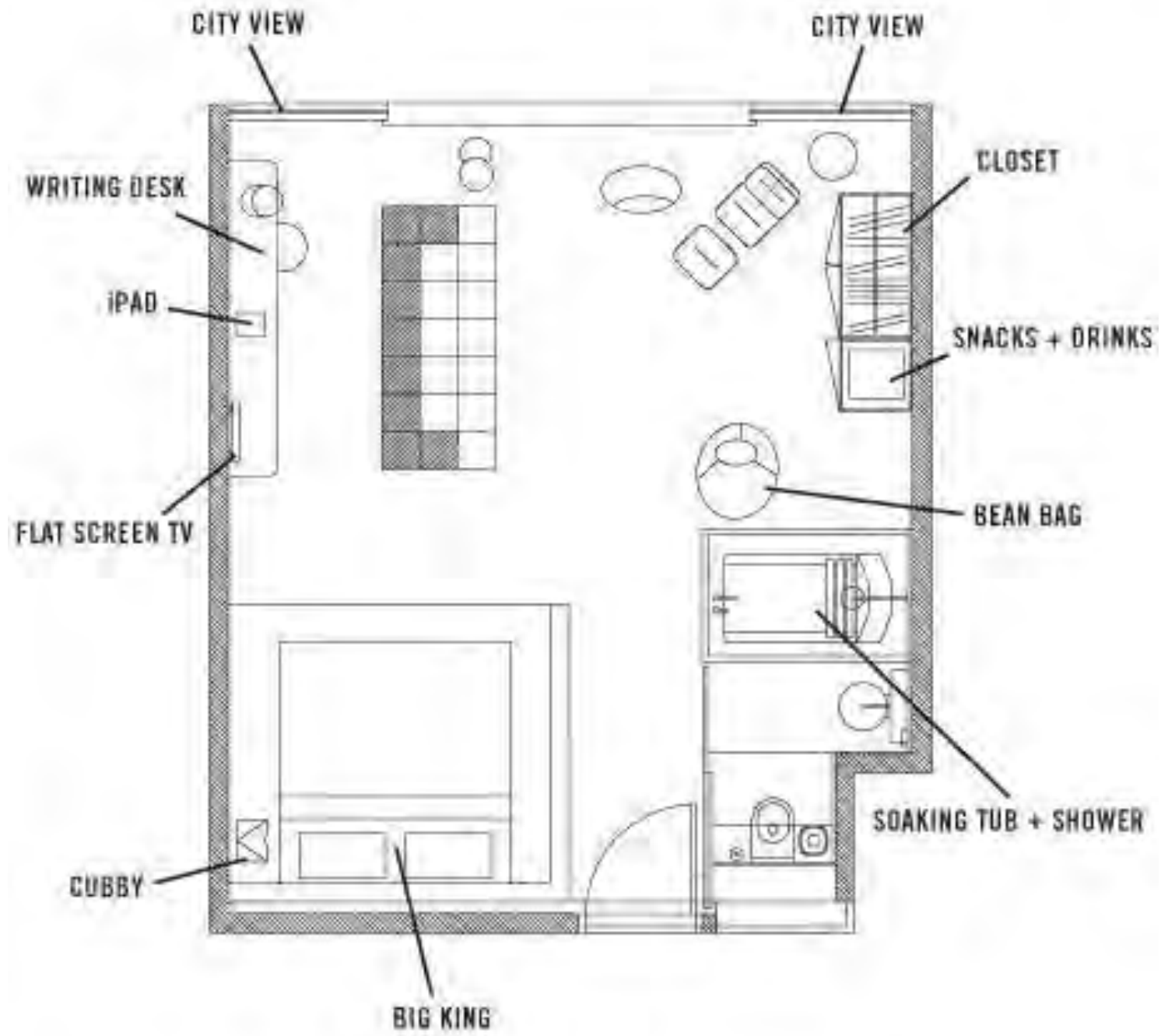
225 sq ft

King Room :



255 sq ft

Studio Suite :

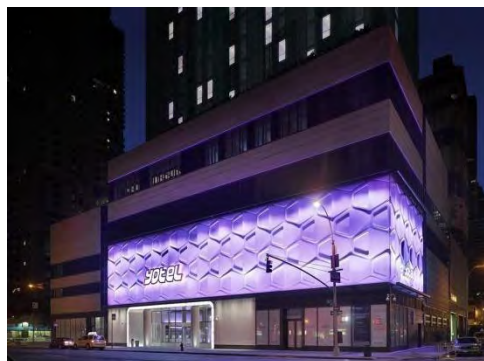




Room Numbers : 713

In the Hotel : Front Desk, Lobby, Check-in / Check-out Kiosk Luggage Storage, Restaurant, Bar / Lounge, Rooftop Bar, Club Lounge, Business Centre, Fitness Centre

| | Season Price | sqm | Bed Type |
|------------------------------|------------------------|------------------------------|---|
| Premium Queen | US\$ 203 ~ US\$ 263 | 16 sqm | Queen Bed |
| Premium Queen with 1 Bunk | US\$ 220 ~ US\$ 356 | 16 sqm | 1 Queen Bed & Single Bunk (Overhead) |
| Executive Queen with 2 Bunks | US\$ 347 ~ US\$ 373 | 31 sqm | 1 Queen Bed & 2 Spacious Single Bunk Beds |
| Executive Queen | US\$ 347 ~ US\$ 373 | 26 sqm | Queen Bed |
| First King | US\$ 364 ~ US\$ 390 | 83 sqm | King Bed |
| First King Terrace | US\$ 398 ~ US\$ 424 | 58 sqm & 92 sqm Terrace | King Bed |
| VIP View Suite | US\$ 1036 | 233 sqm | King Bed (Circle) |
| VIP Terrace Suite | US\$ 1376 | 233 sqm & 213 sqm Terrace | King Bed (Circle) |



20 Yotel

Address : 570 Tenth Avenue, New York, NY, 10036



Lift Lobby :



Lobby : London architects Softroom and New York studio Rockwell Group collaborated on the building, which follows a chain of airport hotels that combine Japanese capsule accommodation with first-class airline cabins. Visitors check in at computerised kiosks while their luggage is stored or retrieved by a giant robotic arm. In the lobby, two large-scale chain curtains were commissioned from Japanese artist Shinpei Naito and manufactured by KriscaDecor.

Check-in /
Check-out
Kiosk Luggage
Storage :



Front Desk :

Restaurant :

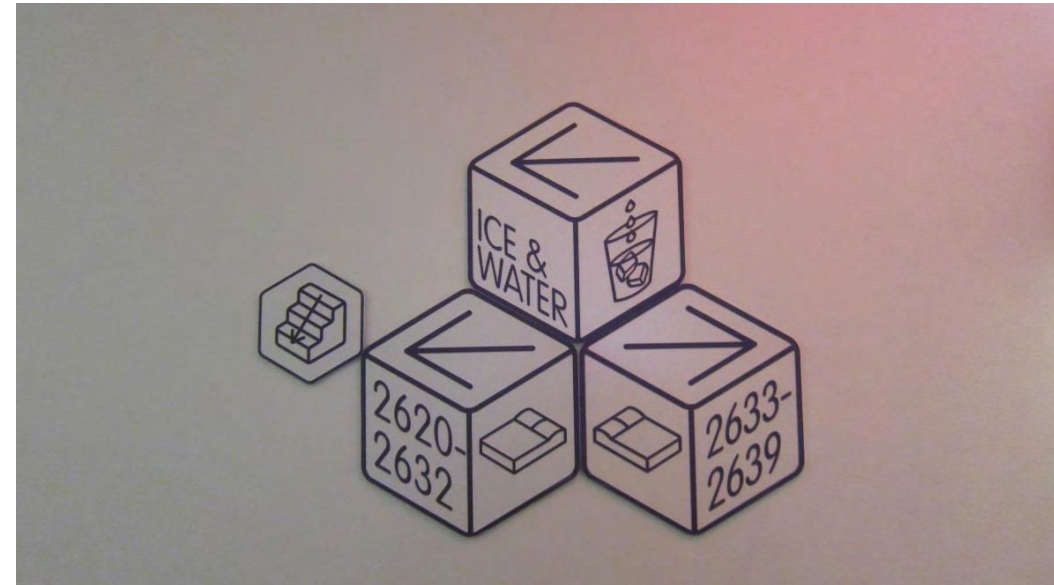


Lift Lobby :

The floor is polished concrete, a finish more often associated with contemporary art galleries, while a suspended timber canopy drops from the ceiling, flanked by a pair of glossy white columns.



Corridor :



Signage :



YOTEL bed employs a motorised mechanism to shift between a comfortable lounge configuration to a fully-flat bed. The additional benefit of this arrangement is that, when in the upright position, extra space for daytime circulation is created at the foot of the bed.

Premium Queen with 1 Bunk :



Executive Queen :



Bathroom & Closet :

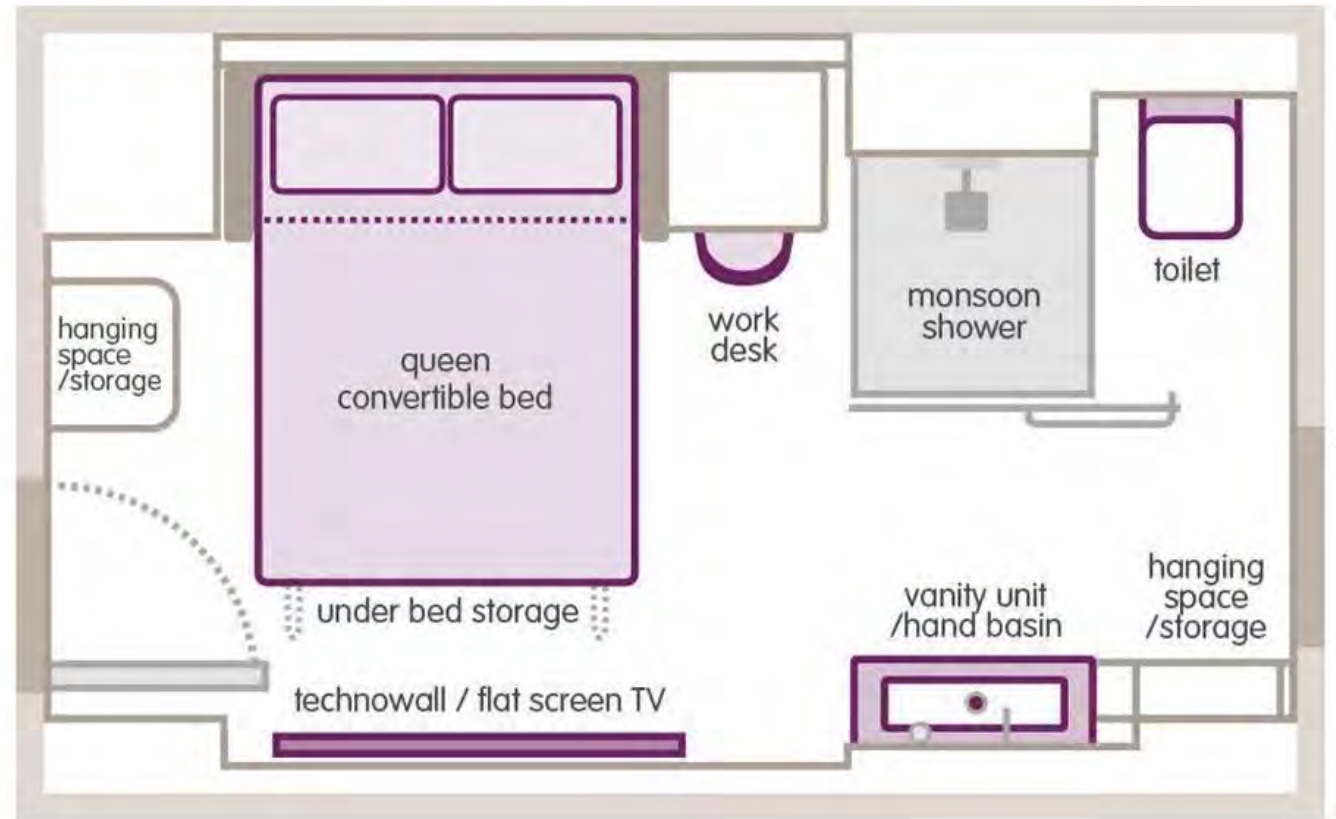
The sheer curtains dividing the sleeping and bathroom areas of the cabins. Warm greys maintain this sophisticated simplicity for the concrete flooring in the public spaces and cabin bathrooms. Meanwhile signature purple tones used primarily in upholstery and are and echoed in accent lighting in both the public spaces and cabins

TV Shelves & Writing Desk :

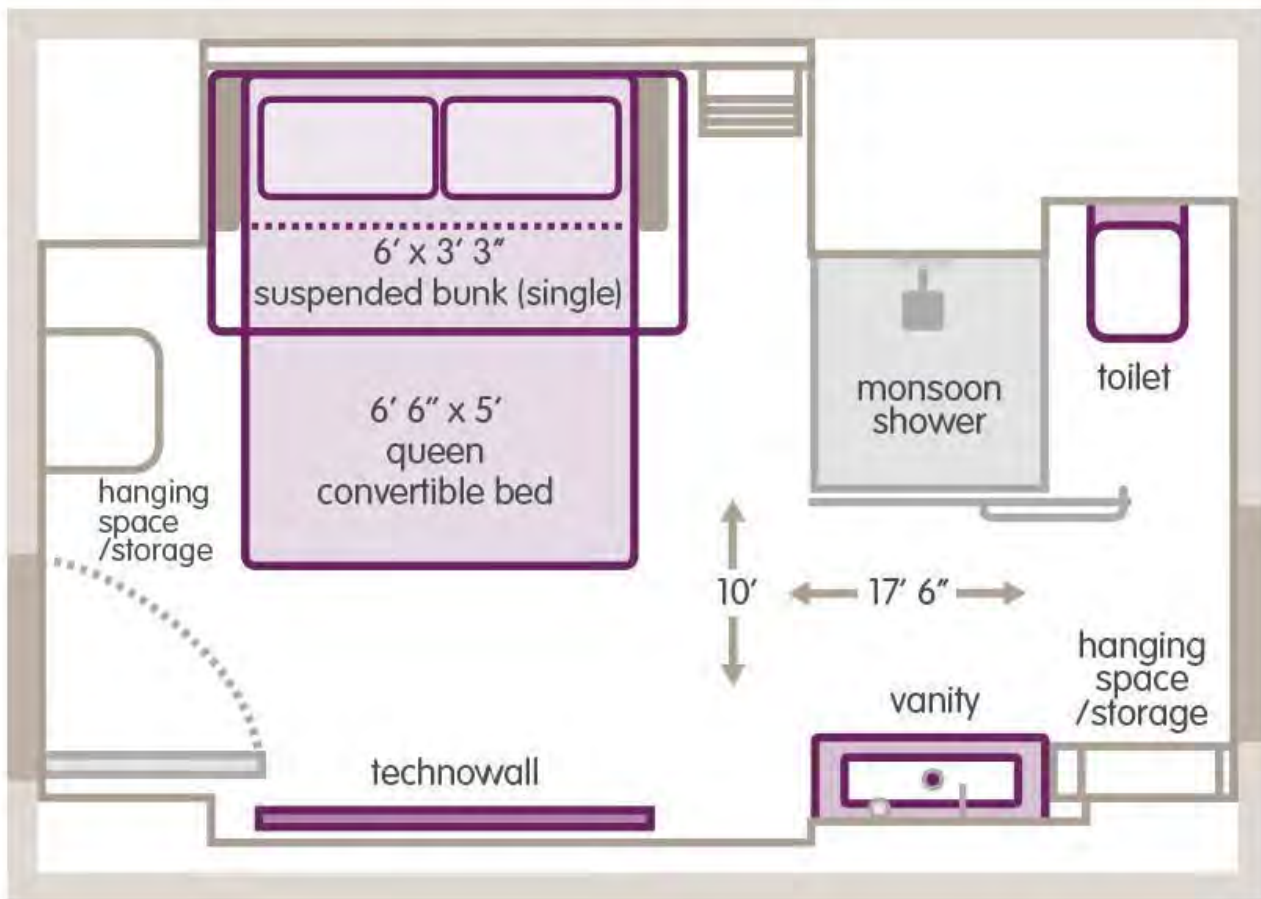


ROOMS

Premium Queen :

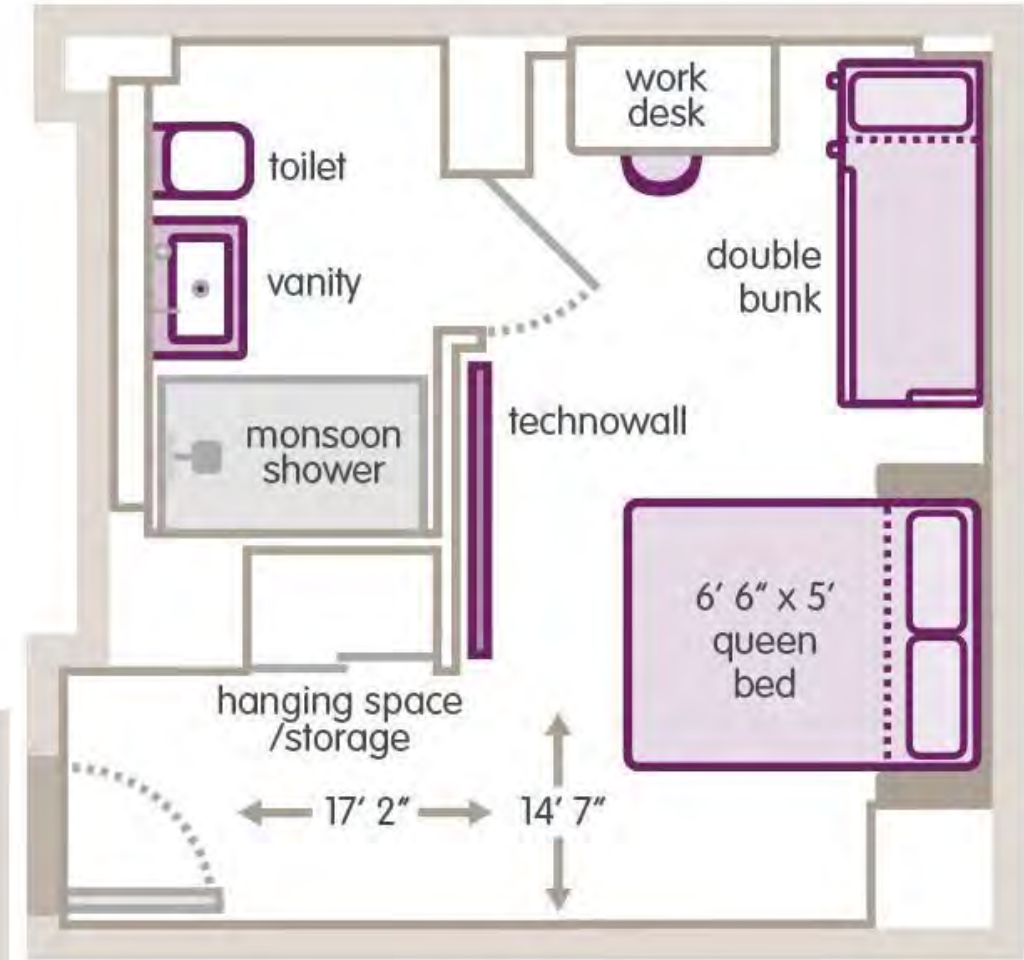


Premium Queen with 1 Bunk :

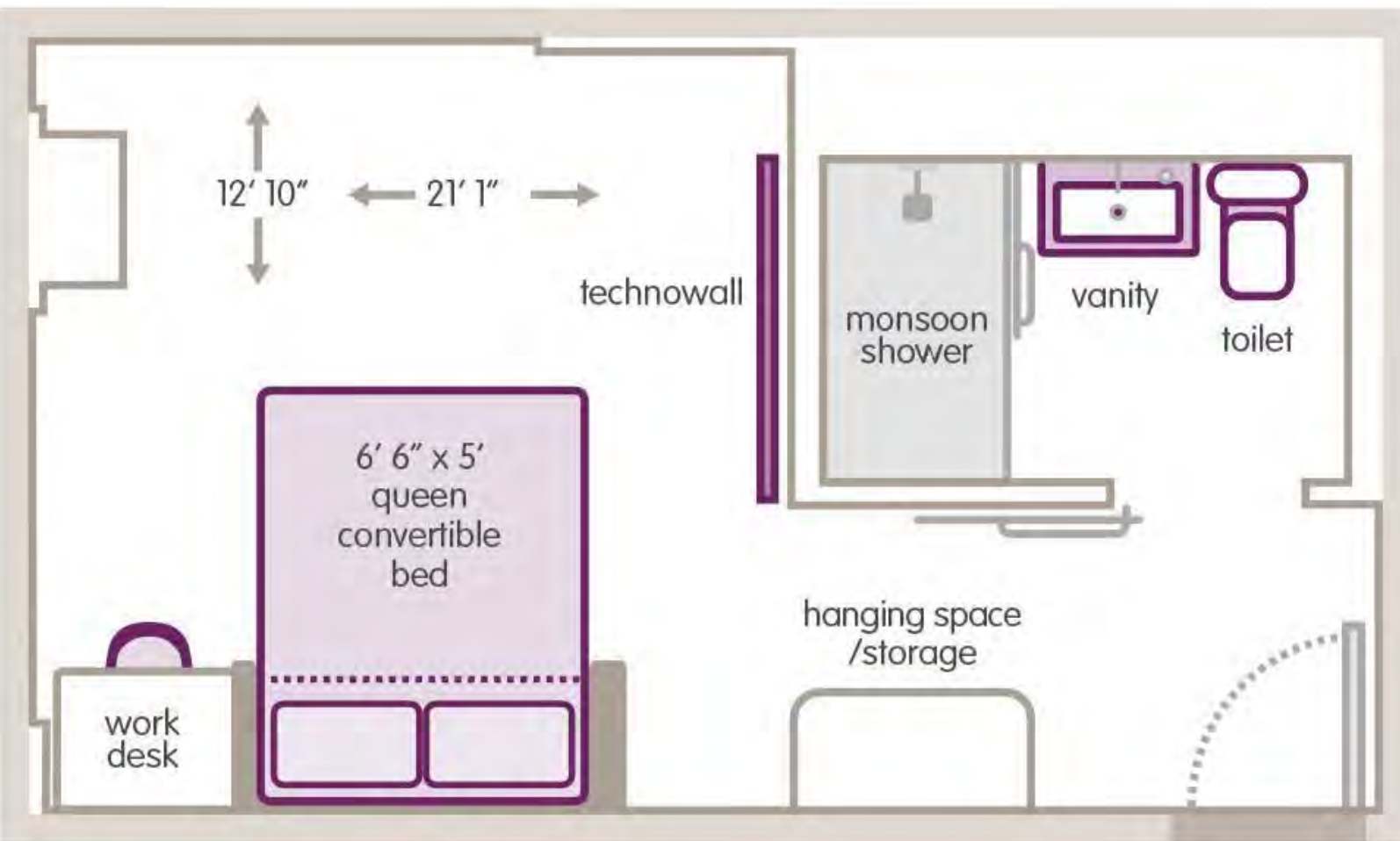


ROOMS

Executive Queen with 2 Bt

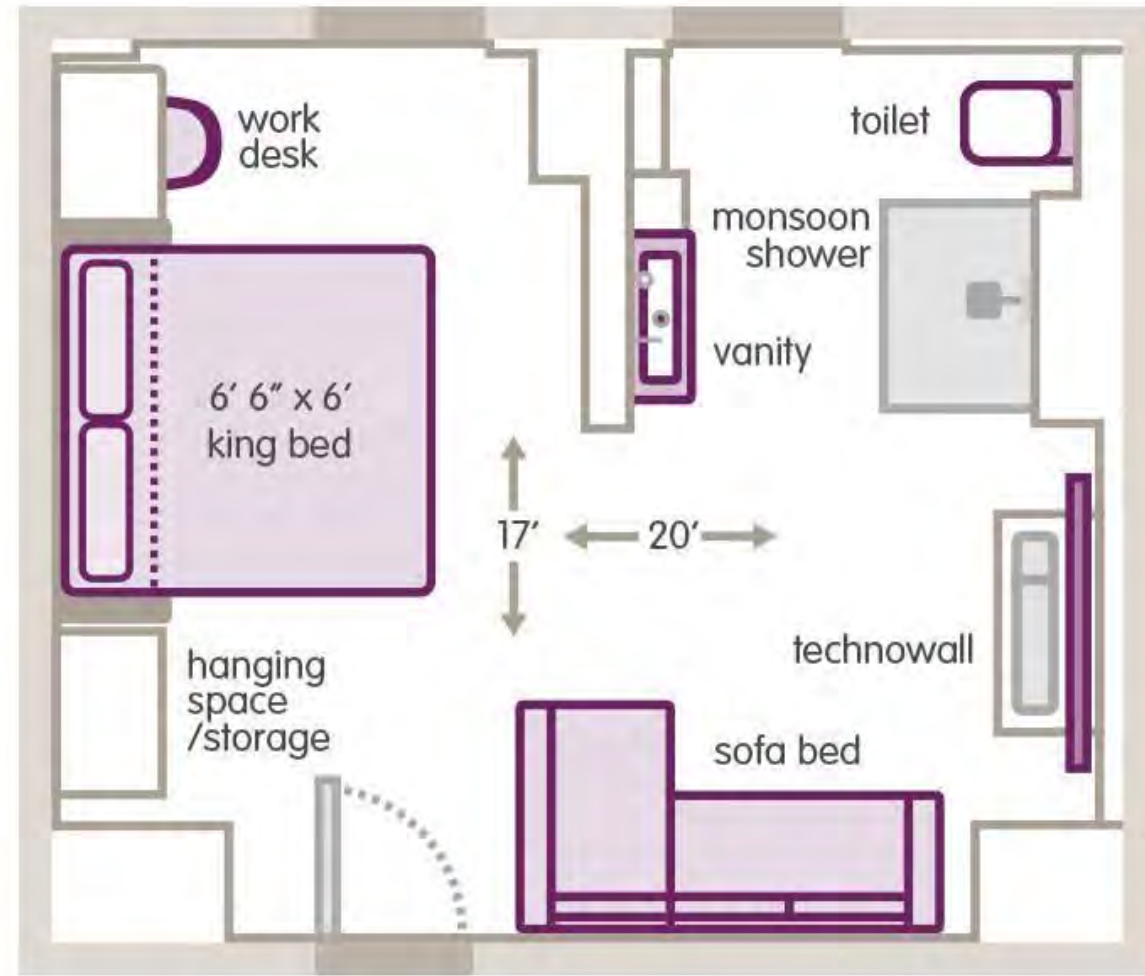


Executive Queen :

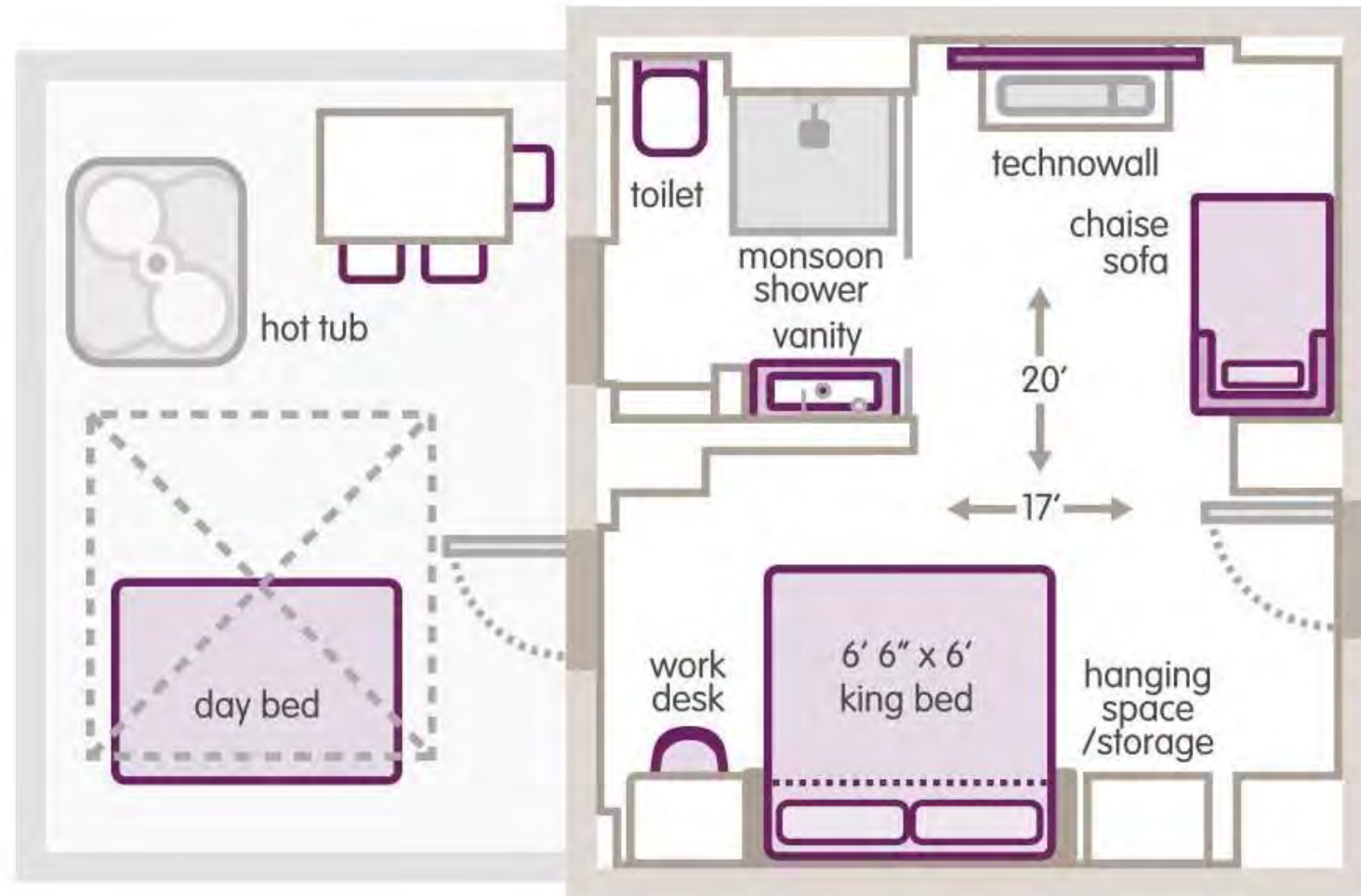


ROOMS

First King :



First King Terrace :



SUITE

VIP Terrace Suite :





21 The Mark Hotel

Room Numbers : 152

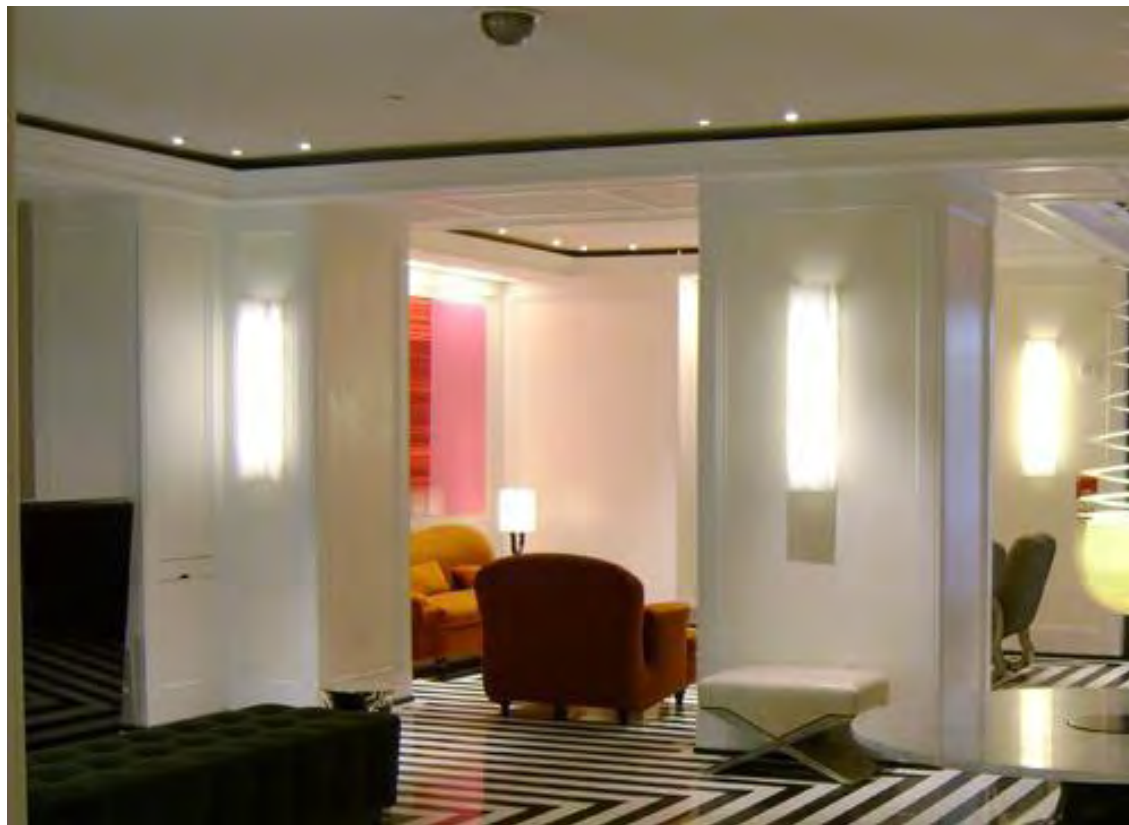
In the Hotel : Front Desk, Lobby, Restaurant, Bar /Lounge, Beauty Salon, Luggage Storage, Fitness Centre

| | Season Price | sqm | Bed Type |
|--------------------------|--------------|--------|-----------|
| Superior Courtyard Queen | US\$ 650 | 37 sqm | Queen Bed |
| Superior Courtyard King | US\$ 700 | 41 sqm | King Bed |
| Madison Queen | US\$ 700 | 37 sqm | Queen Bed |
| Madison King | US\$ 750 | 41 sqm | King Bed |
| Mark Studio | US\$ -- | 44 sqm | King Bed |
| Seventy Seven King | US\$ 830 | 46 sqm | King Bed |
| Mark Premier Studio | US\$ -- | 49 sqm | King Bed |

Address : 25 East 77th Street, Upper East Side, New York City, NY 10075

| | Season Price | sqm | Bed Type |
|----------------------------------|--------------|---------|---------------------------|
| Courtyard Junior Suites | US\$ 1250 | 65 sqm | 1 King Bed, 1 Sofa Bed |
| Seventy Seven Junior Suites | US\$ 1350 | 74 sqm | 1 King Bed, 1 Sofa Bed |
| Park Studio | US\$ 1402.5 | 74 sqm | King Bed |
| Manhattan Suite | US\$ 1487.5 | 80 sqm | King Bed |
| Garden Suite | US\$ 1572.5 | 83 sqm | King Bed |
| Mark Premier One Bedroom Suite | US\$ 1657.5 | 93 sqm | King Bed |
| Madison Suite | US\$ 1997.5 | 102 sqm | 1 King Bed, 1 Sofa Bed |
| Mark Two Bedroom Suite | US\$ 2932.5 | 143 sqm | 1 King Bed, 1 Queen Bed |
| Mark Premier Two Bedroom Suite | US\$ 3357.5 | 152 sqm | 1 King Bed, 1 Queen Bed |
| Mark Premier Three Bedroom Suite | US\$ -- | 197 sqm | 1 King Bed, 2 Queen Beds |
| Mark Signature Suite | US\$ -- | 306 sqm | 2 King Beds, 2 Queen Beds |
| Mark Three Bedroom Terrace Suite | US\$ -- | 352 sqm | 2 King Beds, 2 Queen Beds |
| Mark Five Bedroom Terrace Suite | US\$ -- | 445 sqm | 5 Beds |

The interiors are a masterpiece of French designer, Jean Grange, a true master of elegance, design and luxury. Entering through two sets of double doors, a original Ron Arad pendant light floating over a marble table. The outstanding strips of black and white marble that expands throughout the lobby floor. An eclectic vocabulary of textures, colors, furniture pieces and rich architectural details.



Lobby :



Front Desk & lift Lobby :



In addition to selecting and designing custom furnishings, Jean Grange collaborated with the Parisian design gallerist Pierre Passebon to commission a host of objets d'art, furniture and lighting fixtures, specially created for the hotel by renowned artists and artisans. Beautiful illustrations by Jean Philippe Delhomme narrate the story and set a humorous and playful tone to the hotel and extend the brand from space, to TV screen and paper. Every detail is carefully executed.



Bar / Lounge :



Illustration Story :

Superior Courtyard Queen :



Writing Desk :

Madison Queen :



Mini Bar :



Bathroom :



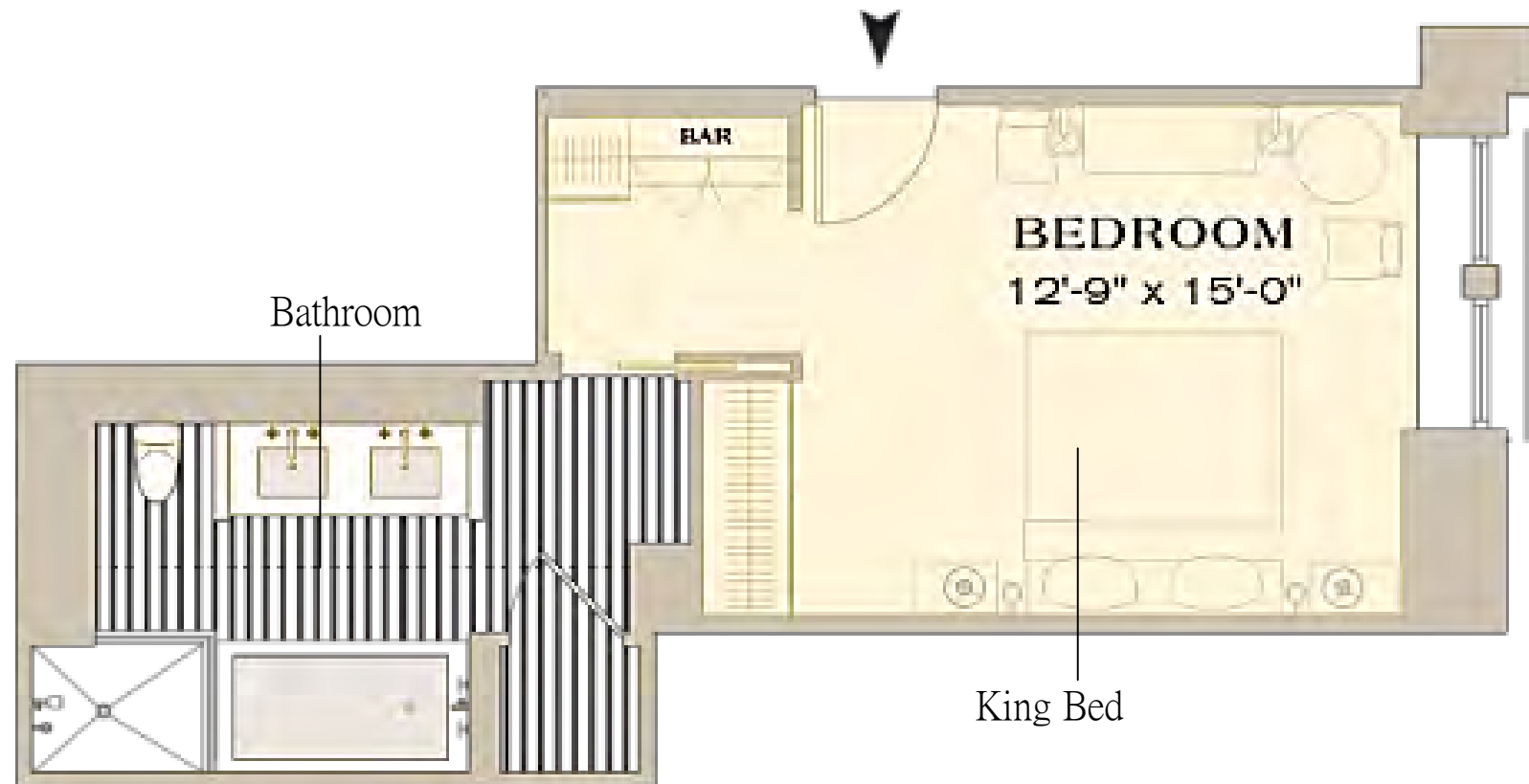
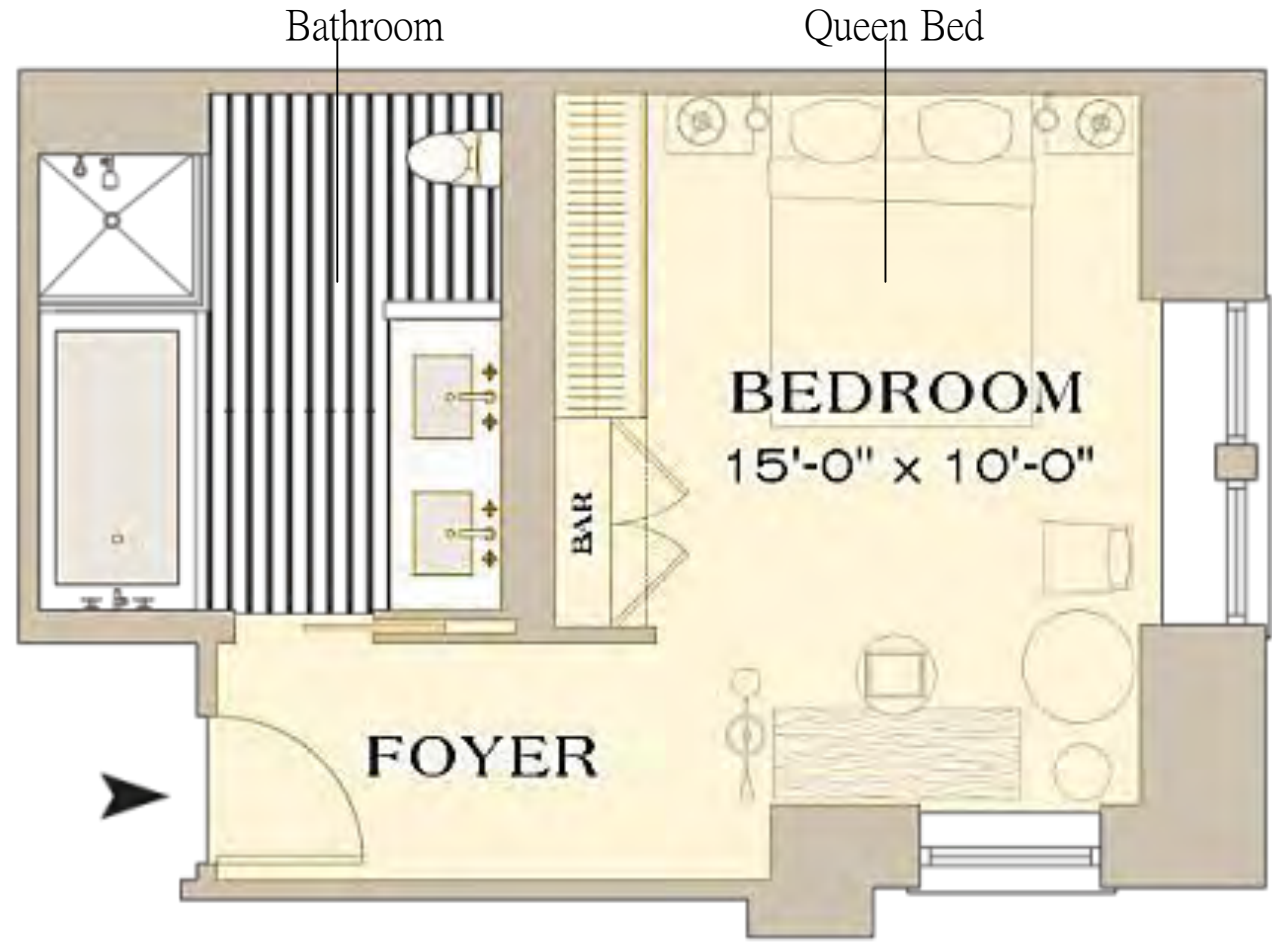
Lavatory :



Bathtub Sanitary :

ROOMS

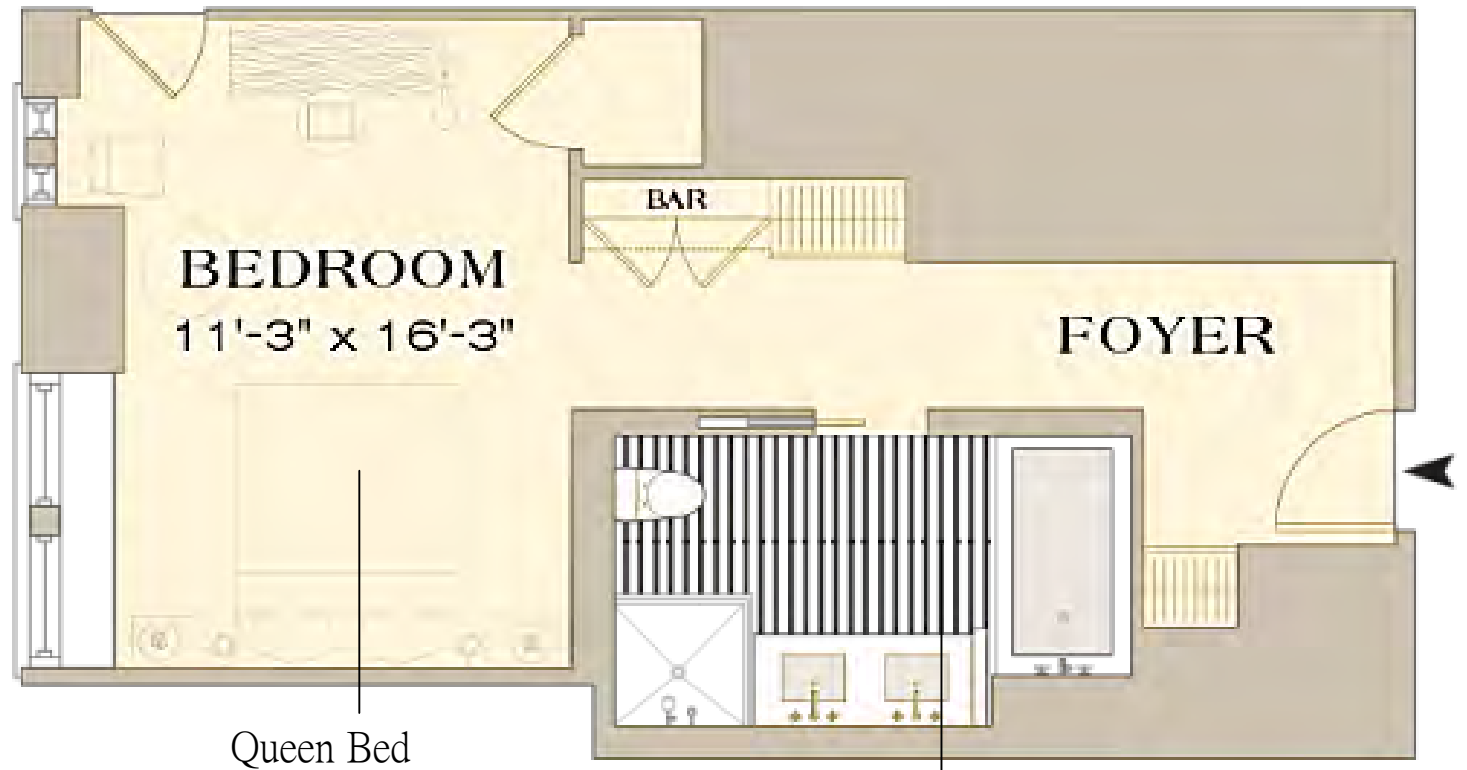
Superior Courtyard Queen :



Superior Courtyard King :

ROOMS

Madison Queen :



Bathroom



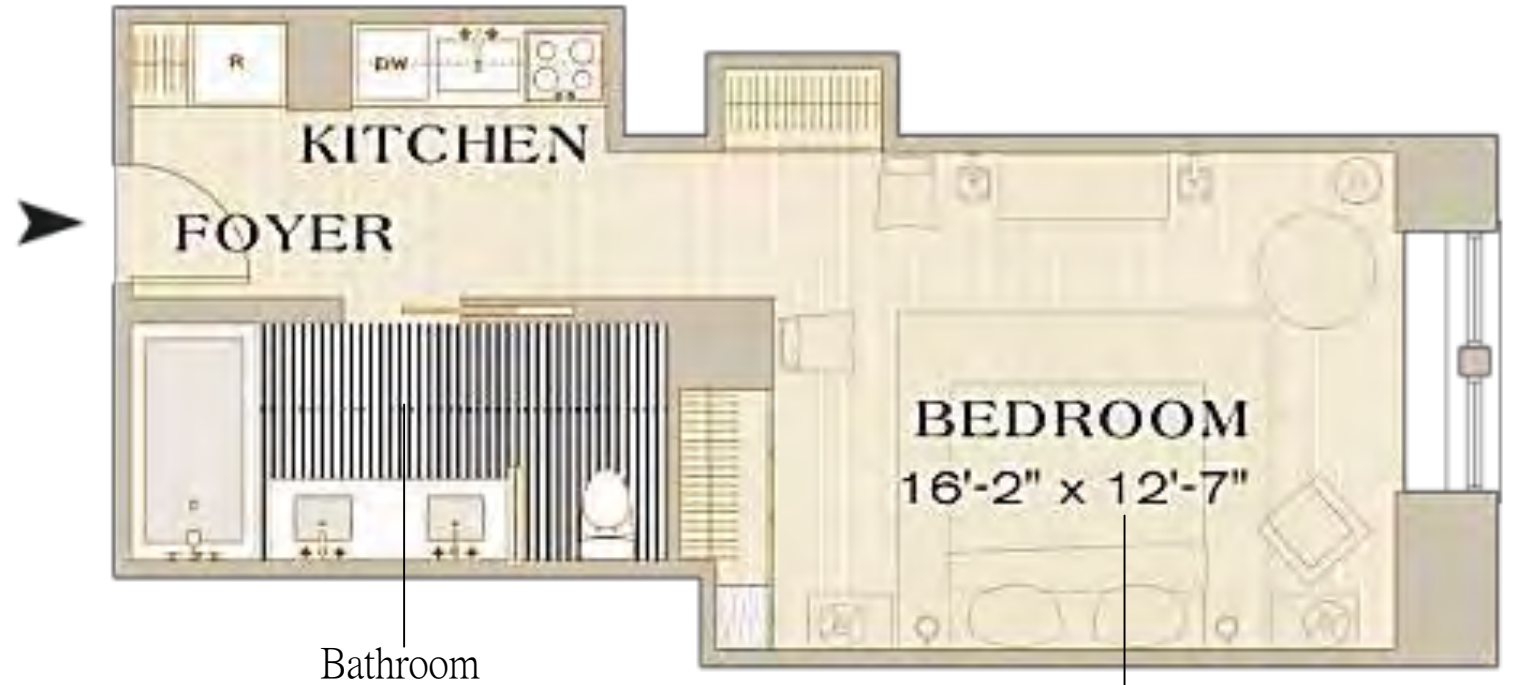
King Bed

Madison King :

Bathroom

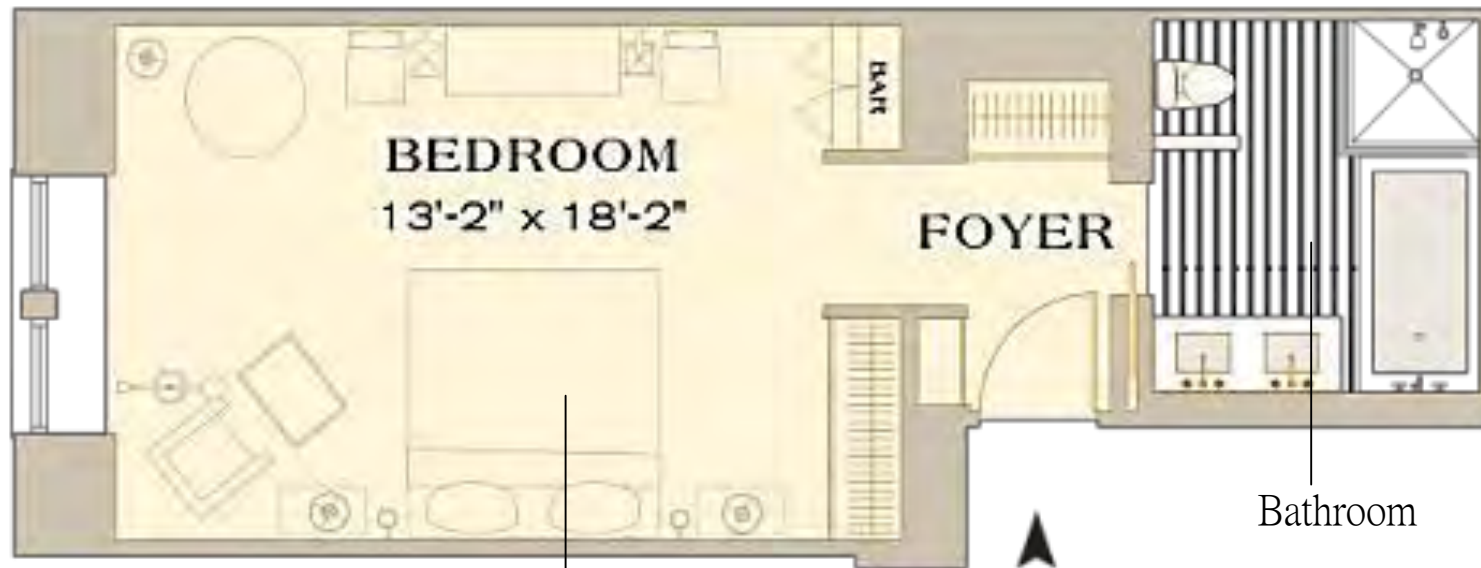
ROOMS

Mark Studio :



Bathroom

King Bed



King Bed

Bathroom

Seventy Seven King :

ROOMS

Mark Premier Studio :

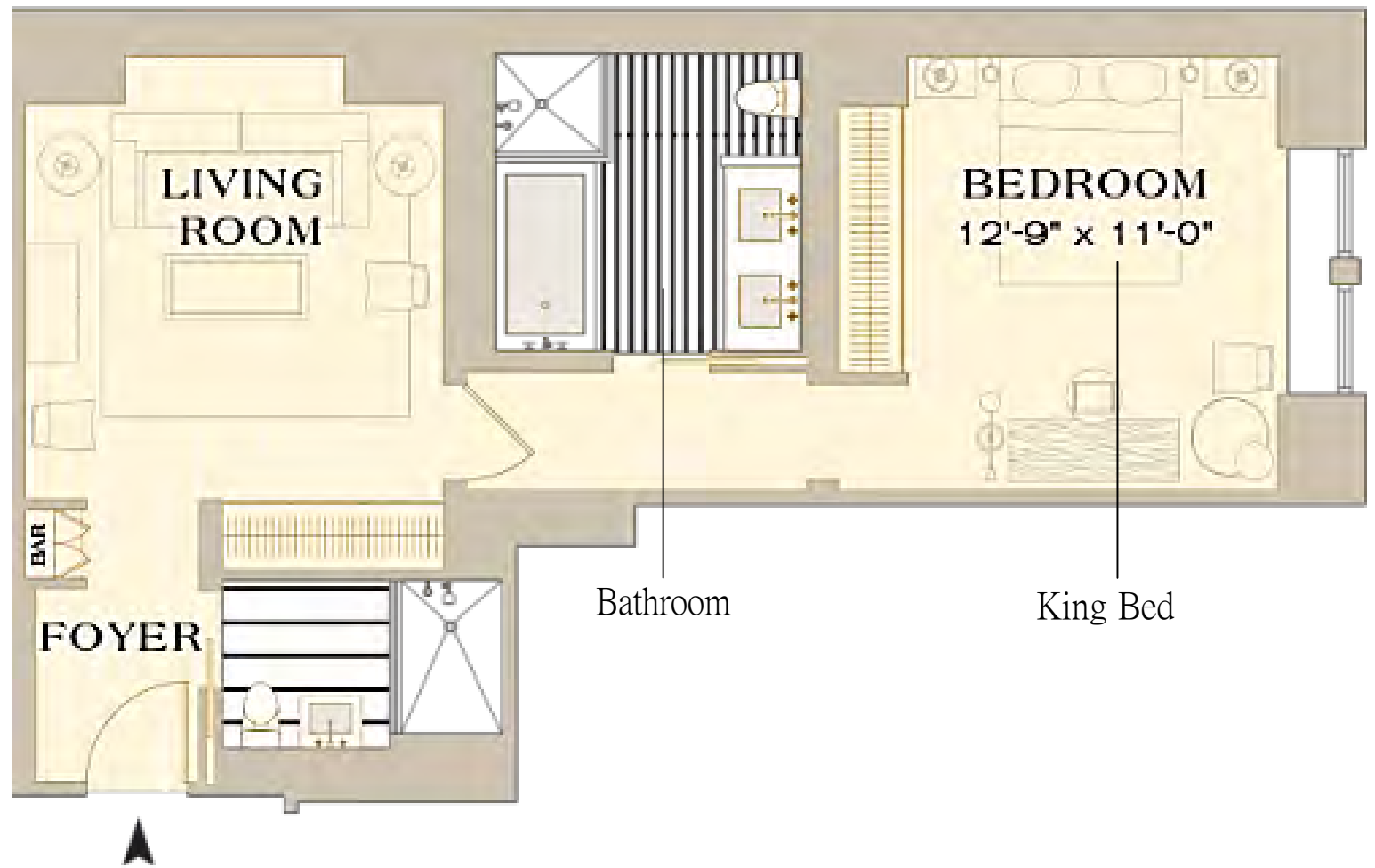
Bathroom

King Bed



SUITE

Courtyard Junior Suites :



Bathroom

King Bed



King Bed

Bathroom

Seventy Seven Junior Suites :

SUITE

Park Studio :



King Bed

King Bed

Bathroom



Bathroom

Manhattan Suite :

SUITE

King Bed



Bathroom

Garden Suite :



Mark Premier One Bedroom Suite :

King Bed

Bathroom

SUITE

Madison Suite :



Queen Bed

Bathroom

Bathroom

Bathroom



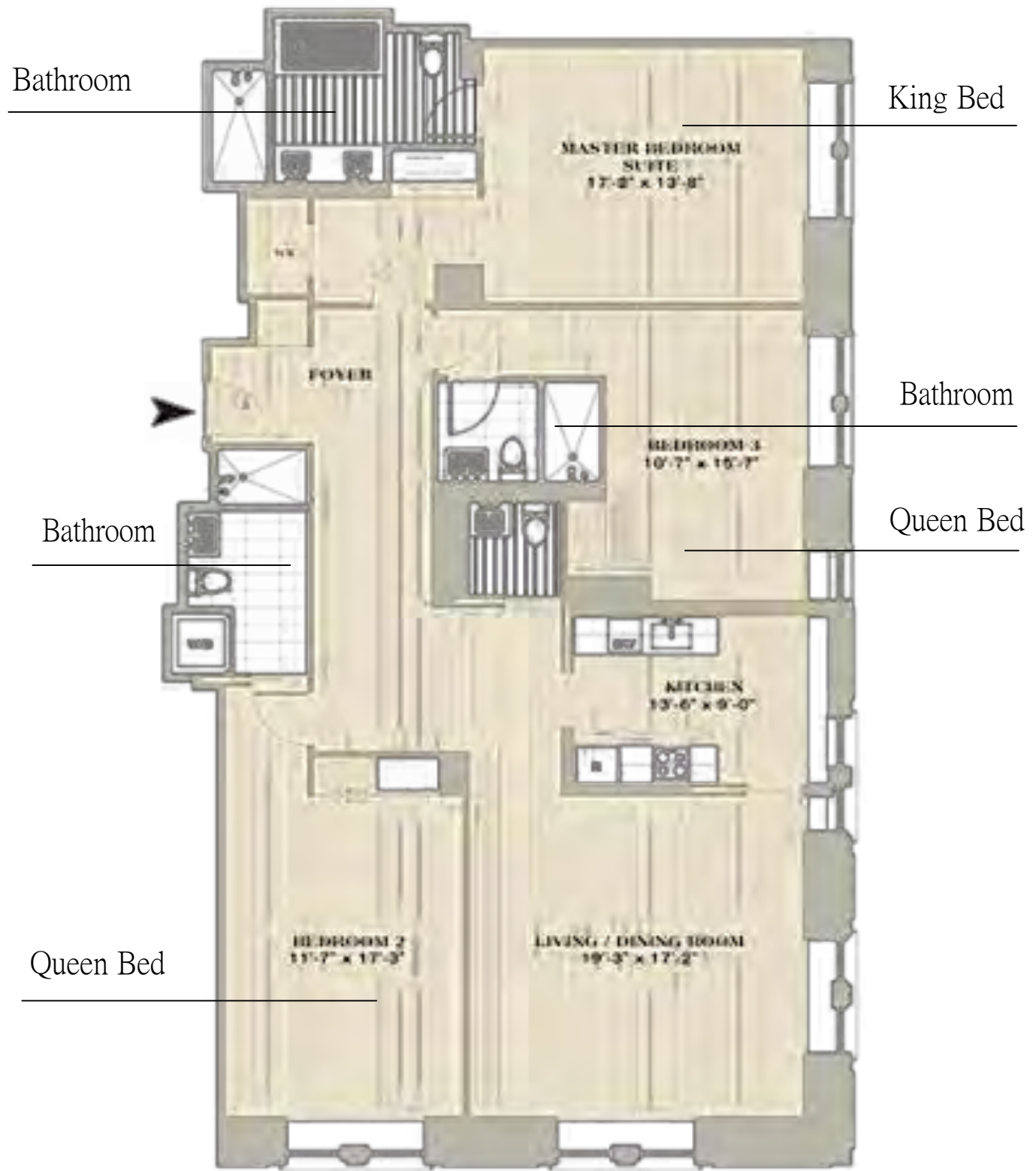
King Bed

Mark Two Bedroom Suite :

SUITE



Mark Premier Two Bedroom Suite :



Mark Premier Three Bedroom Suite :

SUITE



Mark Signature Suite :

SUITE



Mark Three Bedroom Terrace Suite :

The End