

Thailand News

September 2019

CONTENTS

- Project 1: Rosewood Bangkok (Hotel, Bangkok)

1. ROSEWOOD BANGKOK

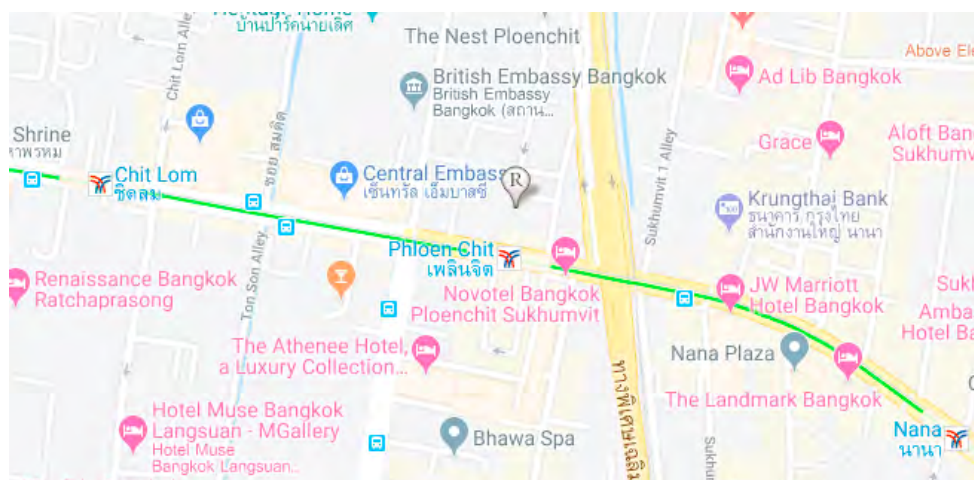
Project Overview

The design of Rosewood Bangkok hotel is inspired by the graceful hand movement of the wai – the Thai gesture of greeting and welcome. Two connecting high-rise structures reveal a central opening that creates dramatic setbacks to accommodate large terraces while maintaining the highest possible degree of privacy. In keeping with the tropical environment, the atrium features lush, vertical gardens, evoking Thailand's famous caves. The 159-room, 30-floor tower features 2 restaurants, 2 bars, a spa, an outdoor swimming pool and a fitness center, as well as a residential-style meeting and function space and the top-floor Sky Villa event venue.

Project Details

1. **Type of Business:** Luxury hotel
2. **Open Date:** 31/03/2019
3. **Concept:** Architecture inspired by the graceful hand movement of the 'wai' Thai greeting.
4. **Location:** Ploenchit Road, Lumpini, Bangkok
5. **Number of rooms:** 159 rooms
6. **Size:** 24,000 sq.m.
7. **Room Rate:** Starting at around THB 10,000 (approximately USD 315) per night.
8. **Developer:** Rende Development, a Bangkok-based hospitality and investment company; www.rende.co.th
9. **Operator:** Rosewood Hotels & Resorts; www.rosewoodhotels.com
10. **Architect:** KPF; www.kpf.com
11. **Executive Architect:** Tandem Architects (Thailand); www.tandemarchitects.com
12. **Interior Designer (Hotel):** Celia Chu Design & Associates (Taiwan); www.celiachu.com
13. **Interior Designer (Restaurant):** AvroKO; www.avroko.com
14. **Website:** www.rosewoodhotels.com/en/bangkok

Location map



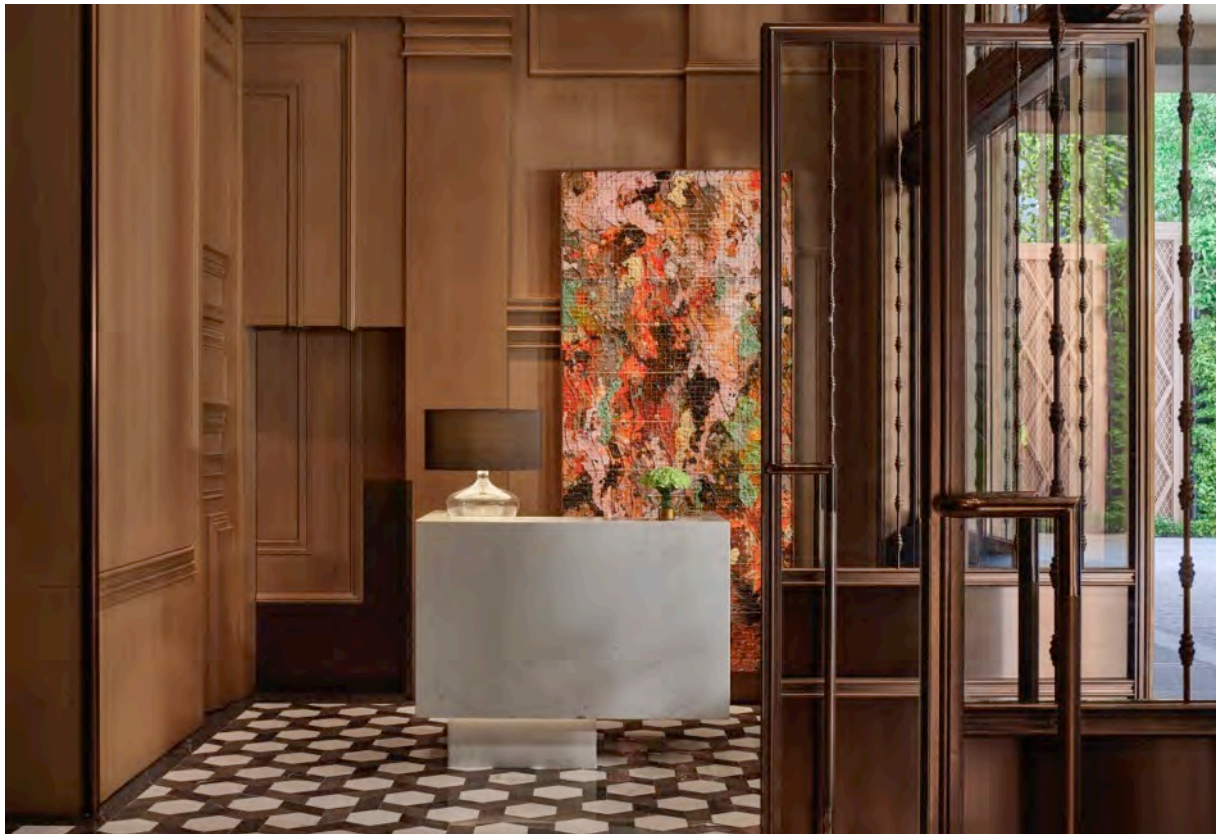
The hotel links directly to the adjacent Ploenchit skytrain station amidst a luxury enclave of embassies, office towers and upscale malls.



The 30-storey tower features a sloping façade.



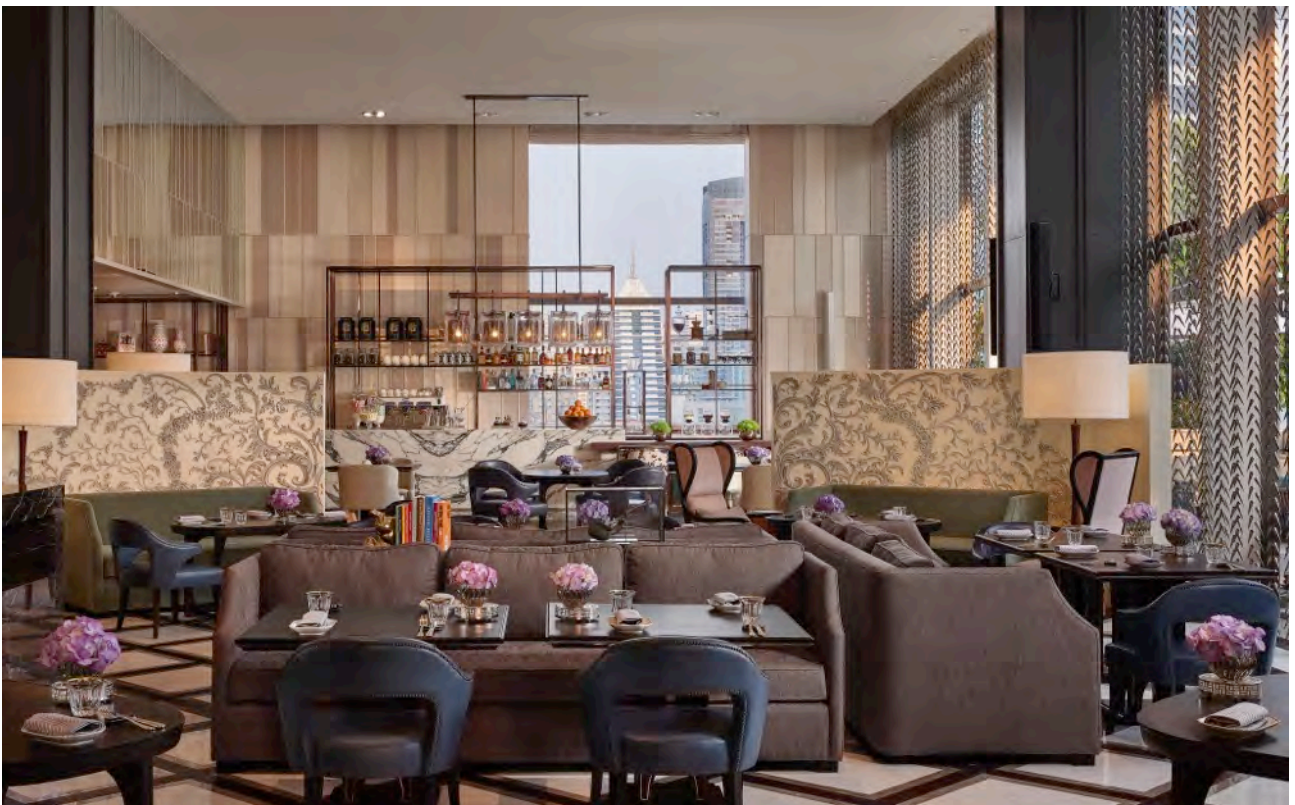
Lobby reception



Lennon's East Lounge bar



Lakorn Brasserie Lakorn, an all-day dining venue serving European cuisine



Lakorn Brasserie



Nan Bei Bar, Rosewood Bangkok's landmark restaurant, offers regional specialties from China.



Outdoor seating area of NanBei Bar



Guestrooms have been decorated in a contemporary Thai style



